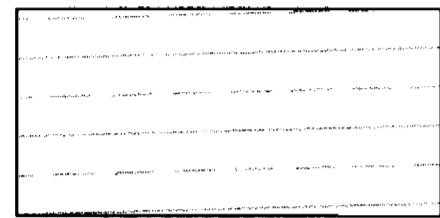


040016900

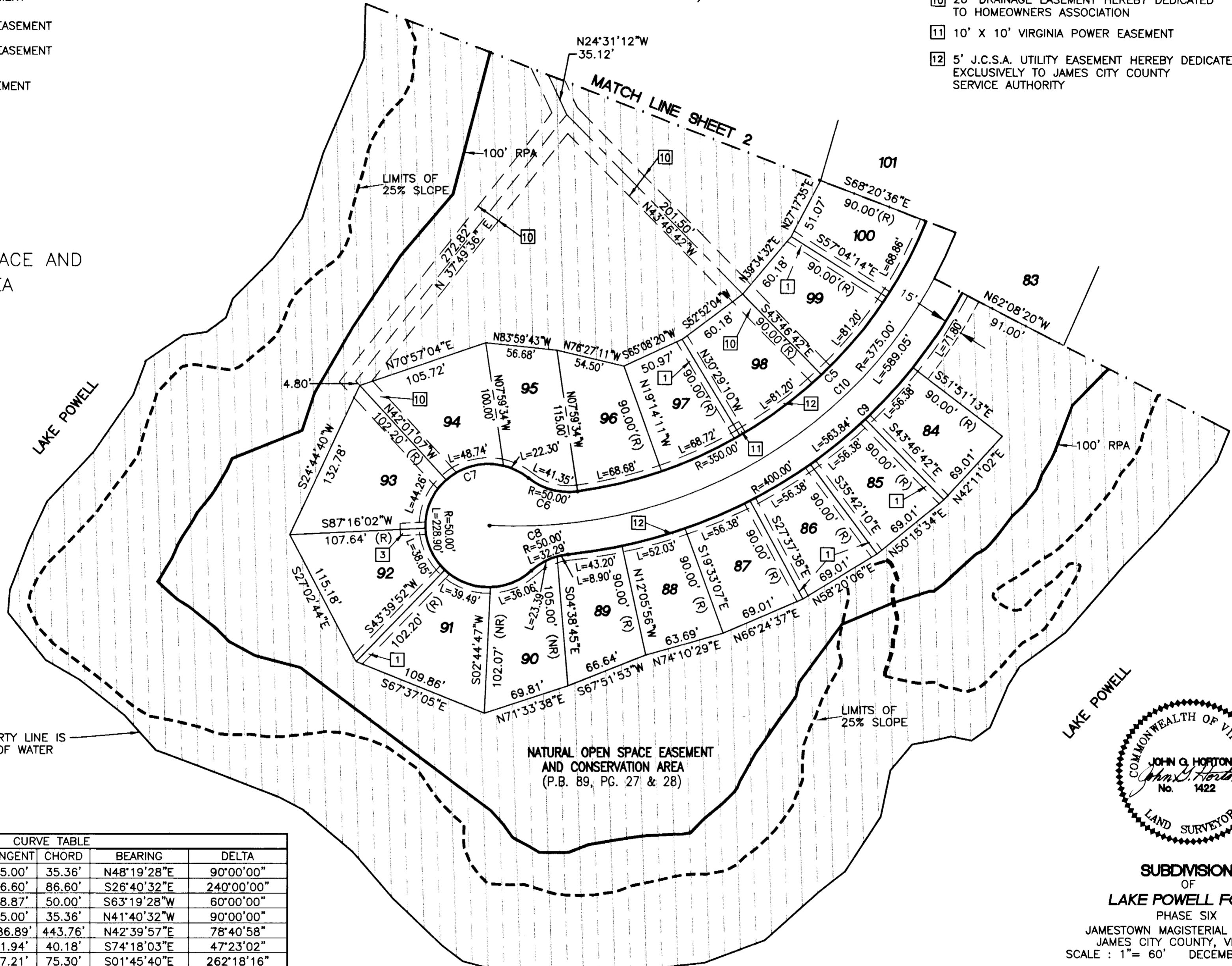
EASEMENT NOTATIONS

- 1 10' PRIVATE DRAINAGE EASEMENT
- 3 10' X 20' VIRGINIA POWER EASEMENT
- 6 EXISTING 15' MAINTENANCE EASEMENT (P.B. 71, PG. 69 & 70)
- 7 EXISTING IMPOUNDMENT EASEMENT (P.B. 71, PG. 69 & 70)

- 10 20' DRAINAGE EASEMENT HEREBY DEDICATED TO HOMEOWNERS ASSOCIATION
- 11 10' X 10' VIRGINIA POWER EASEMENT
- 12 5' J.C.S.A. UTILITY EASEMENT HEREBY DEDICATED EXCLUSIVELY TO JAMES CITY COUNTY SERVICE AUTHORITY

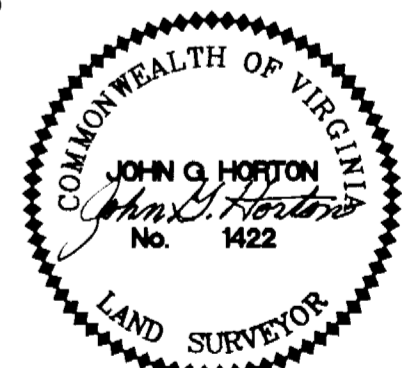


NATURAL OPEN SPACE AND CONSERVATION AREA
(P.B. 89, PG. 27 & 28)



PROPERTY LINE IS EDGE OF WATER

NATURAL OPEN SPACE EASEMENT AND CONSERVATION AREA
(P.B. 89, PG. 27 & 28)



CURVE TABLE						
CURVE	RADIUS	LENGTH	TANGENT	CHORD	BEARING	DELTA
C1	25.00'	39.27'	25.00'	35.36'	N48°19'28"E	90°00'00"
C2	50.00'	209.44'	86.60'	86.60'	S26°40'32"E	240°00'00"
C3	50.00'	52.36'	28.87'	50.00'	S63°19'28"W	60°00'00"
C4	25.00'	39.27'	25.00'	35.36'	N41°40'32"W	90°00'00"
C5	350.00'	480.65'	286.89'	443.76'	N42°39'57"E	78°40'58"
C6	50.00'	41.35'	21.94'	40.18'	S74°18'03"E	47°23'02"
C7	50.00'	228.90'	57.21'	75.30'	S01°45'40"E	262°18'16"
C8	50.00'	32.29'	16.73'	31.73'	S65°35'16"W	37°00'08"
C9	400.00'	563.84'	340.21'	518.31'	N43°42'24"E	80°45'52"
C10	375.00'	589.05'	375.00'	530.33'	N48°19'28"E	90°00'00"

City of Williamsburg & County of James City
Circuit Court: This PLAT was recorded on
2 July 2004
at 10:04 AM/PM, PG. 33
DOCUMENT # 040016900
BETSY B. WOOLRIDGE, CLERK
Betsy B. Woolridge Clerk



SHEET 3 OF 3

HORTON & DODD, P.C.
SURVEYORS, ENGINEERS & PLANNERS
300 GEORGE WASHINGTON HIGHWAY N.
CHESAPEAKE VIRGINIA 23323
(757) 487-4535

P.B. 16, PG. 20