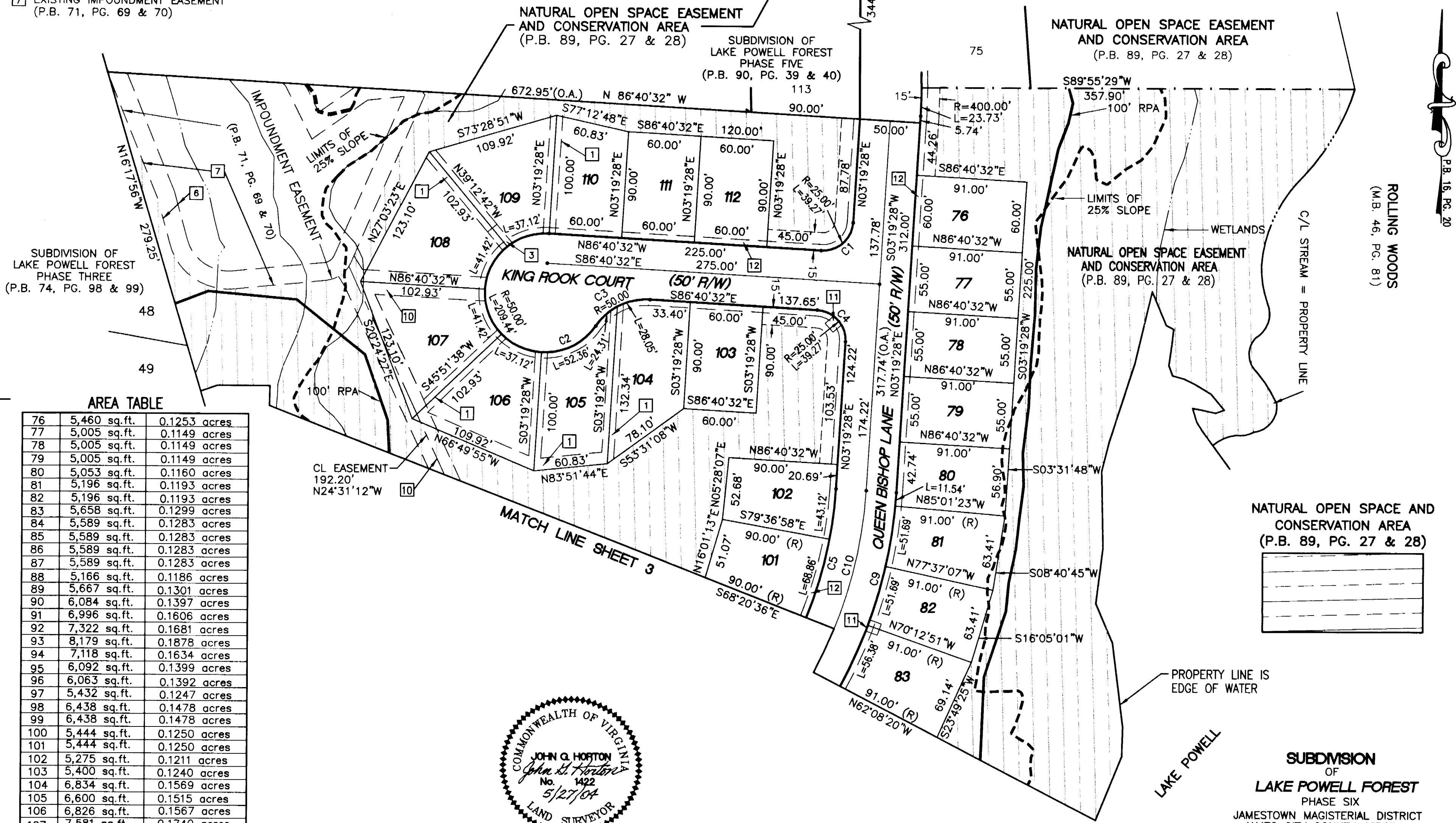


#040016900

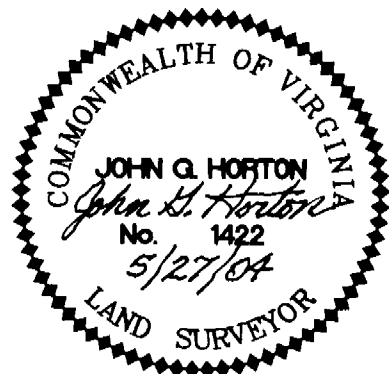
EASEMENT NOTATIONS

- 1 10' PRIVATE DRAINAGE EASEMENT
- 3 10' X 20' VIRGINIA POWER EASEMENT
- 6 EXISTING 15' MAINTENANCE EASEMENT (P.B. 71, PG. 69 & 70)
- 7 EXISTING IMPOUNDMENT EASEMENT (P.B. 71, PG. 69 & 70)
- 10 20' DRAINAGE EASEMENT HEREBY DEDICATED TO HOMEOWNERS ASSOCIATION
- 11 10' X 10' VIRGINIA POWER EASEMENT
- 12 5' J.C.S.A. UTILITY EASEMENT HEREBY DEDICATED EXCLUSIVELY TO JAMES CITY COUNTY SERVICE AUTHORITY

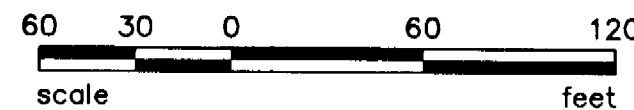


AREA TABLE

Lot	Sq. Ft.	Acres
76	5,460	0.1253
77	5,005	0.1149
78	5,005	0.1149
79	5,005	0.1149
80	5,053	0.1160
81	5,196	0.1193
82	5,196	0.1193
83	5,658	0.1299
84	5,589	0.1283
85	5,589	0.1283
86	5,589	0.1283
87	5,589	0.1283
88	5,166	0.1186
89	5,667	0.1301
90	6,084	0.1397
91	6,996	0.1606
92	7,322	0.1681
93	8,179	0.1878
94	7,118	0.1634
95	6,092	0.1399
96	6,063	0.1392
97	5,432	0.1247
98	6,438	0.1478
99	6,438	0.1478
100	5,444	0.1250
101	5,444	0.1250
102	5,275	0.1211
103	5,400	0.1240
104	6,834	0.1569
105	6,600	0.1515
106	6,826	0.1567
107	7,581	0.1740
108	7,581	0.1740
109	6,826	0.1567
110	5,700	0.1308
111	5,400	0.1240
112	5,400	0.1240



City of Williamsburg & County of James City
 Circuit Court: This PLAT was recorded on
 at 10:04 AM/PM, PB PG 33
 DOCUMENT # 040016900
 BETSY B. WOOLRIDGE, CLERK
 Betsy B. Woolridge Clerk

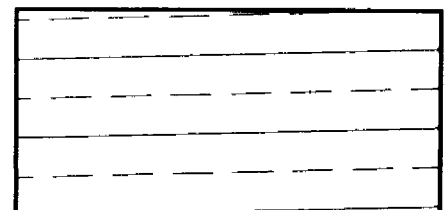


SUBDIVISION OF
LAKE POWELL FOREST
 PHASE SIX
 JAMESTOWN MAGISTERIAL DISTRICT
 JAMES CITY COUNTY, VIRGINIA
 SCALE: 1" = 60' DECEMBER 2, 2003
HORTON & DODD, P.C.
 SURVEYORS, ENGINEERS & PLANNERS
 300 GEORGE WASHINGTON HIGHWAY N.
 CHESAPEAKE VIRGINIA 23323
 (757) 487-4535

P.B. 16, PG. 20

ROLLING WOODS
 (M.B. 46, PG. 81)

NATURAL OPEN SPACE AND
 CONSERVATION AREA
 (P.B. 89, PG. 27 & 28)



PROPERTY LINE IS
 EDGE OF WATER