

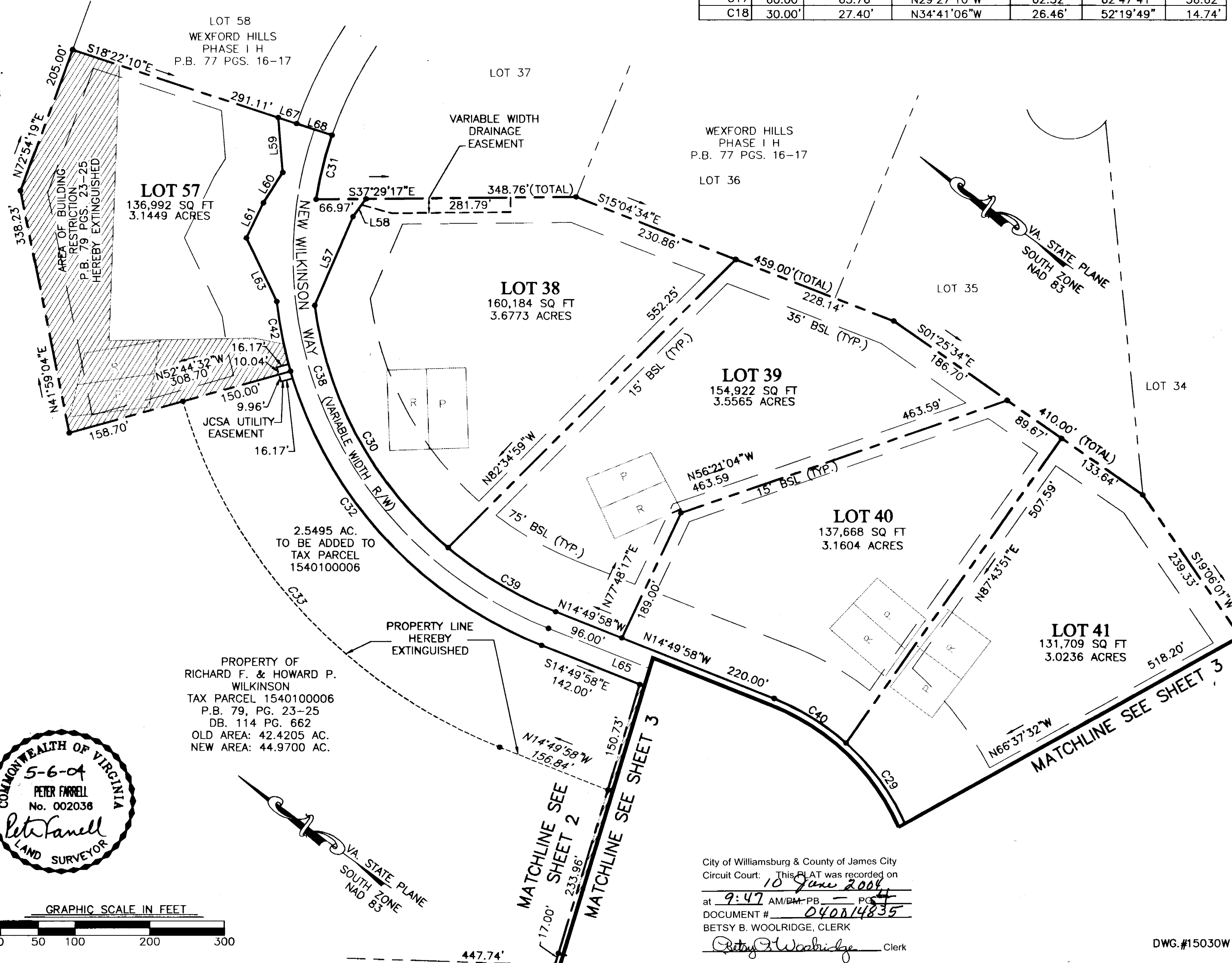
#040014835

ROAD CENTERLINE CURVE TABLE						
CURVE	RADIUS	LENGTH	CHORD BEARING	CHORD	DELTA	TANGENT
C34	300.00'	266.95'	S20°24'34"W	258.23'	50°59'03"	143.04'
C35	750.00'	427.33'	S21°24'18"E	421.57'	32°38'43"	219.64'
C36	1300.00'	662.68'	S23°07'27"E	655.53'	29°12'25"	338.71'
C37	300.00'	451.15'	N28°14'57"E	409.82'	86°09'48"	280.56'
C38	550.00'	829.99'	S28°23'55"W	753.44'	86°27'47"	517.05'
C39	525.00'	170.00'	N05°33'23"W	169.26'	18°33'10"	85.75'
C40	325.00'	115.00'	N04°41'45"W	114.40'	20°16'26"	58.11'
C41	325.00'	128.31'	N41°47'45"W	127.47'	22°37'11"	65.00'
C42	575.00'	97.47'	S42°06'50"W	97.35'	09°42'43"	48.85'

CURVE	RADIUS	LENGTH	CHORD BEARING	CHORD	DELTA	TANGENT
C19	1325.00'	185.60'	N12°32'01"W	185.45'	8°01'33"	92.95'
C20	25.00'	38.34'	N27°23'32"E	34.69'	87°52'39"	24.09'
C21	25.00'	38.34'	N64°43'49"W	34.69'	87°52'39"	24.09'
C22	1325.00'	232.65'	N25°49'18"W	232.35'	10°03'37"	116.62'
C23	725.00'	183.30'	N30°29'05"W	182.81'	14°29'10"	92.14'
C24	725.00'	229.78'	S14°09'44"E	228.82'	18°09'33"	115.86'
C25	275.00'	172.23'	S12°51'36"W	169.43'	35°53'03"	89.05'
C26	30.00'	31.55'	S60°56'00"W	30.12'	60°15'44"	17.41'
C27	60.00'	167.33'	N11°10'15"E	118.14'	159°47'14"	336.62'
C28	275.00'	335.12'	S20°04'42"W	314.77'	69°49'19"	191.92'
C29	325.00'	142.06'	N17°57'49"E	140.93'	25°02'41"	72.18'
C30	525.00'	385.53'	N24°45'26"E	376.92'	42°04'28"	201.92'
C31	525.00'	90.62'	N66°41'06"E	90.51'	09°53'24"	45.42'
C32	575.00'	522.76'	S11°12'45"W	504.95'	52°05'26"	281.01'
C33	725.00'	659.13'	N11°12'45"E	636.67'	52°05'26"	354.32'

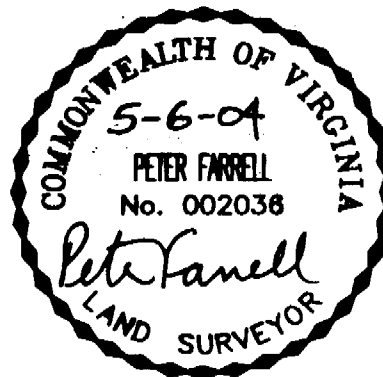
CURVE TABLE						
CURVE	RADIUS	LENGTH	CHORD BEARING	CHORD	DELTA	TANGENT
C1	394.15'	219.19'	S79°29'38"E	216.37'	31°51'43"	112.51'
C2	931.24'	58.16'	S65°21'34"E	58.15'	3°34'42"	29.09'
C3	225.00'	217.32'	S18°13'54"W	208.97'	55°20'23"	117.98'
C4	60.00'	83.48'	S71°25'00"W	76.91'	79°43'15"	50.10'
C5	60.00'	46.62'	S09°17'56"W	45.45'	44°30'53"	24.56'
C6	30.00'	11.12'	S02°20'27"E	11.06'	21°14'07"	5.62'
C7	775.00'	121.83'	S18°24'16"E	121.70'	9°00'24"	61.04'
C8	775.00'	200.46'	S30°19'04"E	199.90'	14°49'12"	100.79'
C9	1275.00'	28.65'	S37°01'58"E	28.65'	1°17'15"	14.33'
C10	1275.00'	183.95'	S25°02'49"E	183.79'	8°15'59"	92.14'
C13	1275.00'	193.15'	S12°51'38"E	192.97'	8°40'47"	96.76'
C14	30.00'	12.41'	S03°19'36"W	12.32'	23°41'36"	6.29'
C15	60.00'	33.07'	S82°43'44"E	32.66'	31°34'56"	16.97'
C16	60.00'	83.29'	N41°42'44"E	76.76'	79°32'08"	49.93'
C17	60.00'	65.76'	N29°27'10"W	62.52'	62°47'41"	36.62'
C18	30.00'	27.40'	N34°41'06"W	26.46'	52°19'49"	14.74'

PROPERTY OF
RICHARD F. & HOWARD P.
WILKINSON
TAX PARCEL 1540100006
P.B. 79, PG. 23-25
DB. 114 PG. 662
OLD AREA: 42.4205 AC.
NEW AREA: 44.9700 AC.



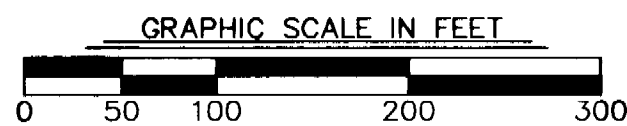
WEXFORD HILLS PHASE II
BEING A SUBDIVISION OF
PROPERTY OF
**HOWARD P. &
RICHARD F. WILKINSON**
JAMES CITY COUNTY VIRGINIA
STONEHOUSE DISTRICT
SCALE: 1"=100' DATE: 04/07/04
SHEET 4 OF 4

PROPERTY OF
RICHARD F. & HOWARD P.
WILKINSON
TAX PARCEL 1540100006
P.B. 79, PG. 23-25
DB. 114 PG. 662
OLD AREA: 42.4205 AC.
NEW AREA: 44.9700 AC.



**LANDMARK
DESIGN GROUP**

Engineers • Planners • Surveyors
Landscape Architects • Environmental Consultants
4029 IRONBOUND ROAD SUITE 100
WILLIAMSBURG, VIRGINIA
(757) 253-2975 FAX: (757) 229-0049



City of Williamsburg & County of James City
Circuit Court: This PLAT was recorded on
10 June 2004
at 9:47 AM/PM-PB PG 4
DOCUMENT # 040014835
BETSY B. WOOLRIDGE, CLERK
Betsy B. Woolridge Clerk

DWG.#15030W