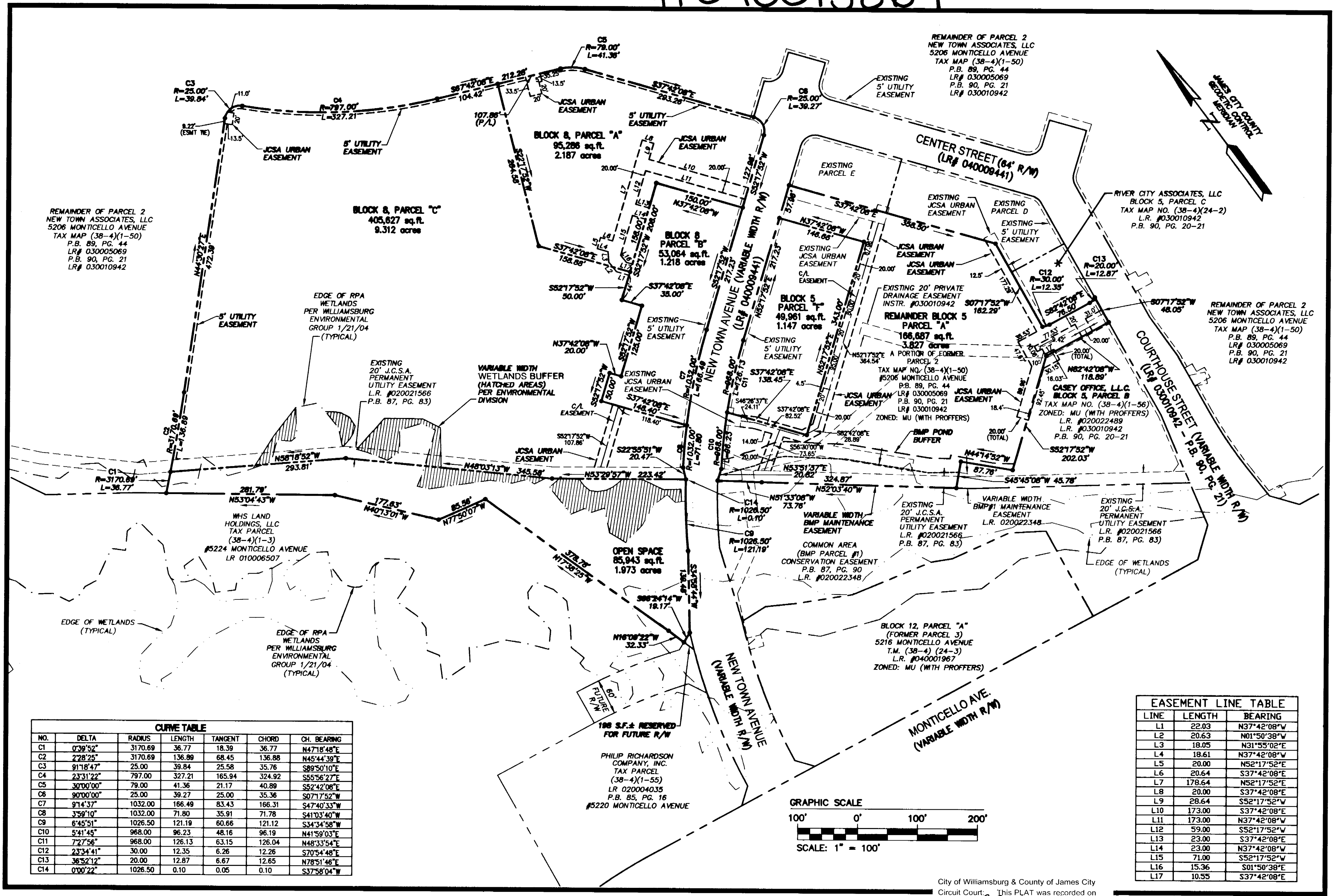
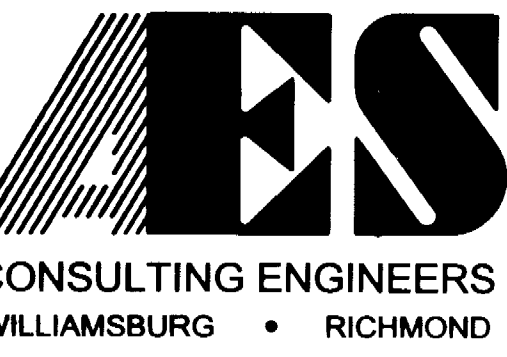
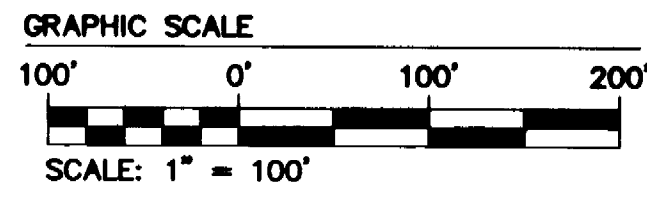


# #040013864



NO.	DELTA	RADIUS	LENGTH	TANGENT	CHORD	CH. BEARING
C1	0°39'52"	3170.69	36.77	18.39	36.77	N47°18'48"E
C2	2°28'25"	3170.69	136.89	68.45	136.88	N45°44'39"E
C3	91°18'47"	25.00	39.84	25.58	35.76	S89°50'10"E
C4	23°31'22"	797.00	327.21	165.94	324.92	S55°56'27"E
C5	30°00'00"	79.00	41.36	21.17	40.89	S52°42'08"E
C6	90°00'00"	25.00	39.27	25.00	35.36	S07°17'52"W
C7	91°14'37"	1032.00	166.49	83.43	166.31	S47°40'33"W
C8	3°59'10"	1032.00	71.80	35.91	71.78	S41°03'40"W
C9	6°45'51"	1026.50	121.19	60.66	121.12	S34°34'58"W
C10	5°41'45"	968.00	96.23	48.16	96.19	N41°59'03"E
C11	7°27'56"	968.00	126.13	63.15	126.04	N48°33'54"E
C12	23°34'41"	30.00	12.35	6.26	12.26	S70°54'48"E
C13	36°52'12"	20.00	12.87	6.67	12.65	N78°51'46"E
C14	0°00'22"	1026.50	0.10	0.05	0.10	S37°58'04"W

LINE	LENGTH	BEARING
L1	22.03	N37°42'08"W
L2	20.63	N01°50'38"W
L3	18.05	N31°53'02"E
L4	18.61	N37°42'08"W
L5	20.00	S52°17'52"E
L6	20.64	S37°42'08"E
L7	178.64	N52°17'52"E
L8	20.00	S37°42'08"E
L9	28.64	S52°17'52"W
L10	173.00	S37°42'08"E
L11	173.00	N37°42'08"W
L12	59.00	S52°17'52"W
L13	23.00	S37°42'08"E
L14	23.00	N37°42'08"W
L15	71.00	S52°17'52"W
L16	15.36	S01°50'38"E
L17	10.55	S37°42'08"E



5248 Olde Towne Road, Suite 1  
Williamsburg, Virginia 23188  
(757) 253-0040  
Fax (757) 220-8994

PLAT OF SUBDIVISION  
BLOCK 5, PARCEL F AND BLOCK 8, PARCELS A, B AND C  
NEW TOWN  
BEING A PORTION OF THE PROPERTY OWNED BY  
NEW TOWN ASSOCIATES, LLC

BERKELEY DISTRICT COUNTY OF JAMES CITY VIRGINIA



City of Williamsburg & County of James City  
Circuit Court: This PLAT was recorded on  
28 May 2004  
at 3:46 AM/PM, PB. PG. \_\_\_\_\_  
DOCUMENT # 040013864  
BETSY B. WOOLRIDGE, CLERK  
Betsy B. Woolridge Clerk

No.	DATE	REVISION / COMMENT / NOTE	BY
2	5/13/04	REVISED VARIABLE WIDTH WET.BUFFER	JFS
1	4/30/04	REVISED PER COUNTY COMMENTS	JFS

Designed	Drawn
AES	JFS
Scale	Date
1"=100'	3/5/04
Project No.	
6632-E-12-1	
Drawing No.	
2 OF 2	

S:\JDBS\6632-E-12-1\_Bldg Comm\_Plot Roads.dwg Plots\6632E12IP02.DWG 05/13/04 01:54:20 PM EDT