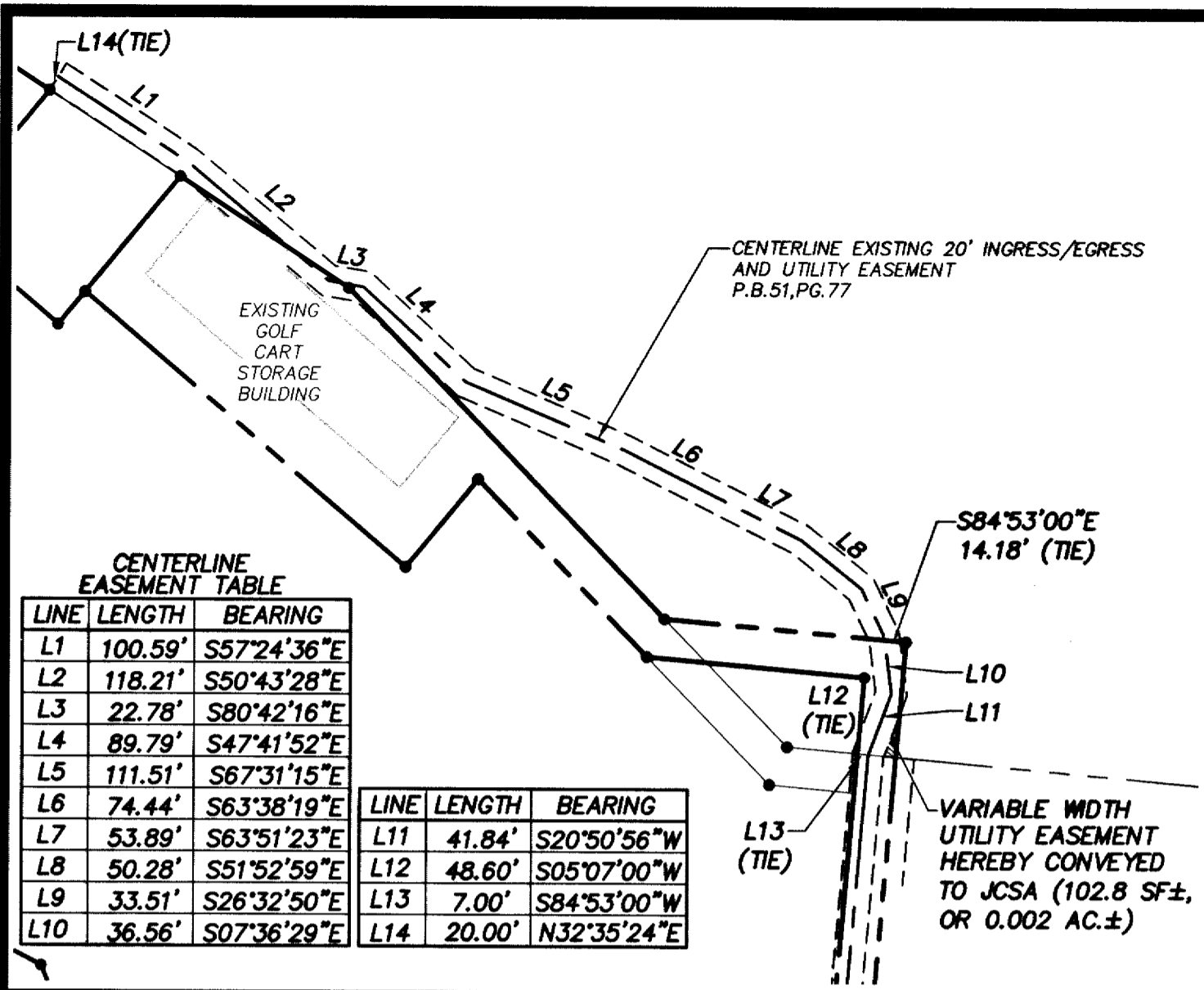


#040010312



CENTERLINE EASEMENT TABLE

LINE	LENGTH	BEARING
L1	100.59'	S57°24'36"E
L2	118.21'	S50°43'28"E
L3	22.78'	S80°42'16"E
L4	89.79'	S47°41'52"E
L5	111.51'	S67°31'15"E
L6	74.44'	S63°38'19"E
L7	53.89'	S63°51'23"E
L8	50.28'	S51°52'59"E
L9	33.51'	S26°32'50"E
L10	36.56'	S07°36'29"E
L11	41.84'	S20°50'56"W
L12	48.60'	S05°07'00"W
L13	7.00'	S84°53'00"W
L14	20.00'	N32°35'24"E

INSERT
SCALE: 1"=100'

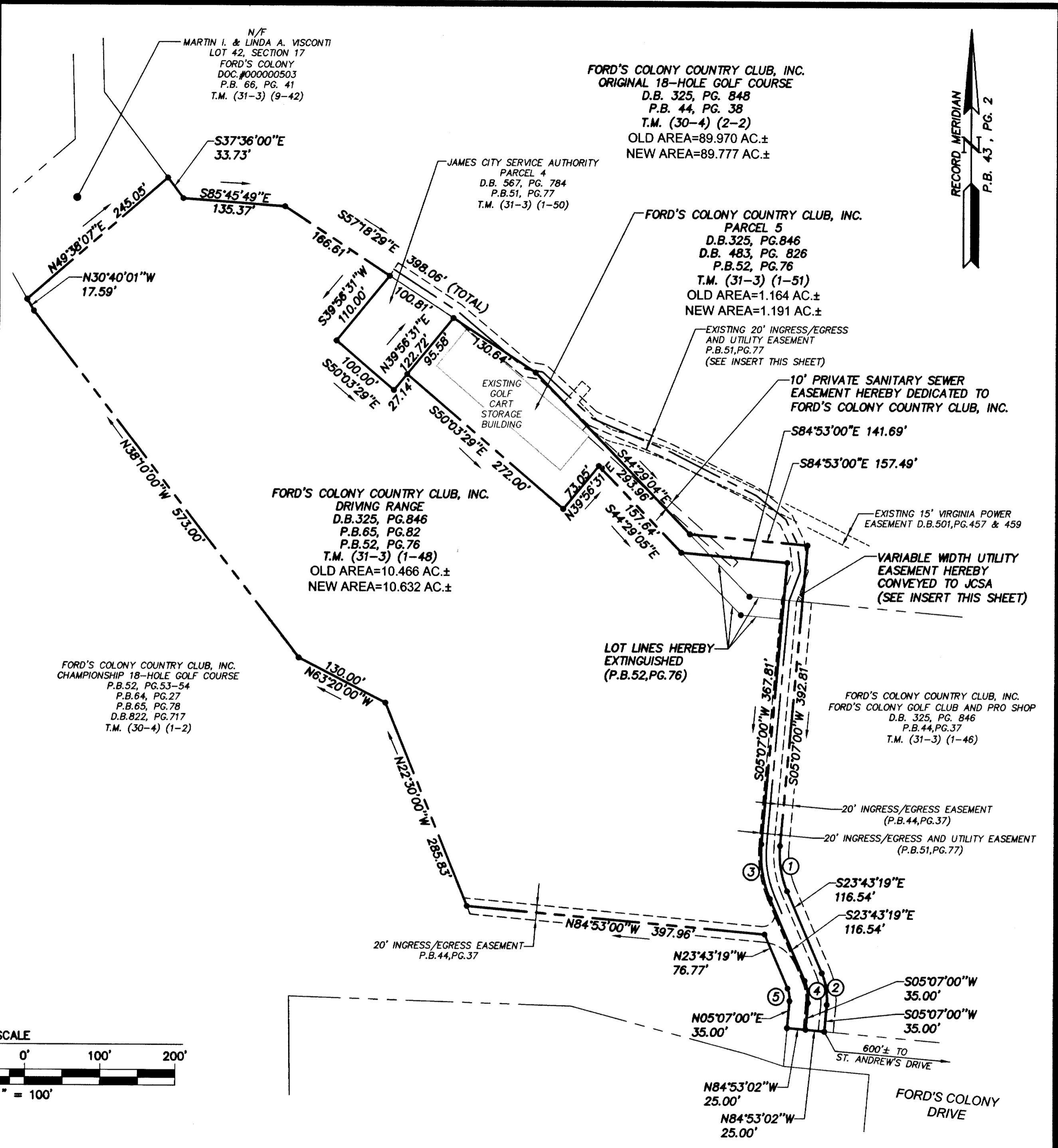
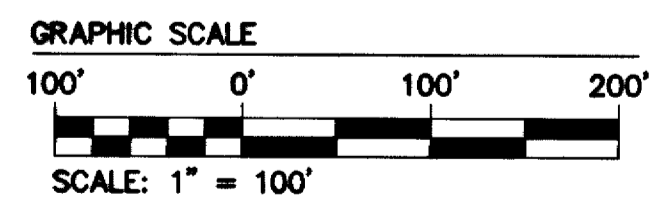
NOTE:
EASEMENTS DENOTED AS "JCSA UTILITY EASEMENTS" ARE FOR THE EXCLUSIVE USE OF THE JAMES CITY SERVICE AUTHORITY AND THE PROPERTY OWNER, OTHER UTILITY SERVICE PROVIDERS DESIRING TO USE THESE EASEMENTS WITH THE EXCEPTION OF PERPENDICULAR UTILITY CROSSINGS MUST OBTAIN AUTHORIZATION FOR ACCESS AND USE FROM JCSA AND THE PROPERTY OWNER. ADDITIONALLY, JCSA SHALL NOT BE HELD RESPONSIBLE FOR ANY DAMAGE TO IMPROVEMENTS WITHIN THIS EASEMENT, FROM ANY CAUSE.

AREA TABULATION

FORMER DRIVING RANGE	455,909 S.F.±	OR	10.466 AC.±
FORMER PARCEL 5	50,709 S.F.±	OR	1.164 AC.±
FORMER GOLF COURSE	3,919,093 S.F.±	OR	89.970 AC.±
TOTAL	4,425,711 S.F.±	OR	101.600 AC.±
NEW DRIVING RANGE	463,157 S.F.±	OR	10.632 AC.±
NEW PARCEL 5	51,871 S.F.±	OR	1.191 AC.±
NEW GOLF COURSE	3,910,683 S.F.±	OR	89.777 AC.±
TOTAL	4,425,711 S.F.±	OR	101.600 AC.±

CURVE DATA

NO.	DELTA	RADIUS	LENGTH	TAN	CHORD	CH.BEARING
1	28°50'19"	120.00'	60.40'	30.85'	59.76'	S09°18'09"E
2	28°50'19"	83.00'	41.78'	21.34'	41.34'	S09°18'09"E
3	28°50'19"	145.00'	72.98'	37.28'	72.21'	S09°18'09"E
4	28°50'19"	58.00'	29.19'	14.91'	28.89'	S09°18'09"E
5	28°50'19"	33.00'	16.61'	8.48'	16.44'	N09°18'09"W



E.S. CONSULTING ENGINEERS
5248 Olde Towne Road, Suite 1
Williamsburg, Virginia 23188
(757) 253-0040
Fax (757) 220-8994

PLAT OF BOUNDARY LINE ADJUSTMENT
FORD'S COLONY COUNTRY CLUB
FORD'S COLONY
@ WILLIAMSBURG

POW-HATAN DISTRICT JAMES CITY COUNTY VIRGINIA

City of Williamsburg & County of James City
Circuit Court: This PLAT was recorded on
14 April 2004
at *11:52* AM/PM PB — PG —
DOCUMENT # *040010312*
BETSY B. WOOLRIDGE, CLERK
Betsy B. Woolridge Clerk

No.	DATE	REVISION / COMMENT / NOTE	BY
1	10/16/03	REVISED PER JCSA COMMENT DATED 10/15/03	RDM

Designed	Drawn
RDM	EAW
Scale	Date
1"=100'	9/29/03
Project No.	
5652-36B	
Drawing No.	
2 OF 2	

S:\JOBS\5652\36B-GolfAcademy\dwg\Plats\Brdy Line Adjust\565236Bp02-BL-ADJUST.dwg, 10/17/2003 09:59:01 AM, eaw