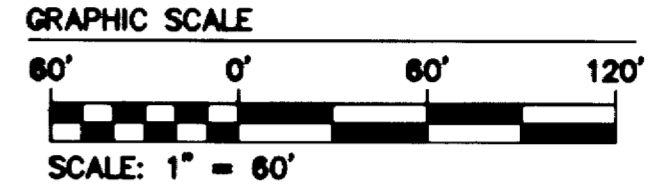
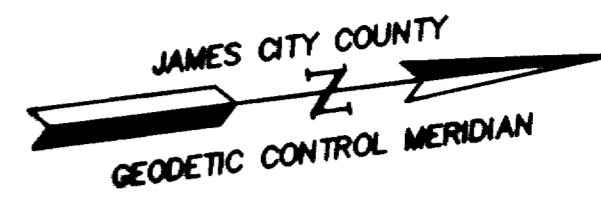
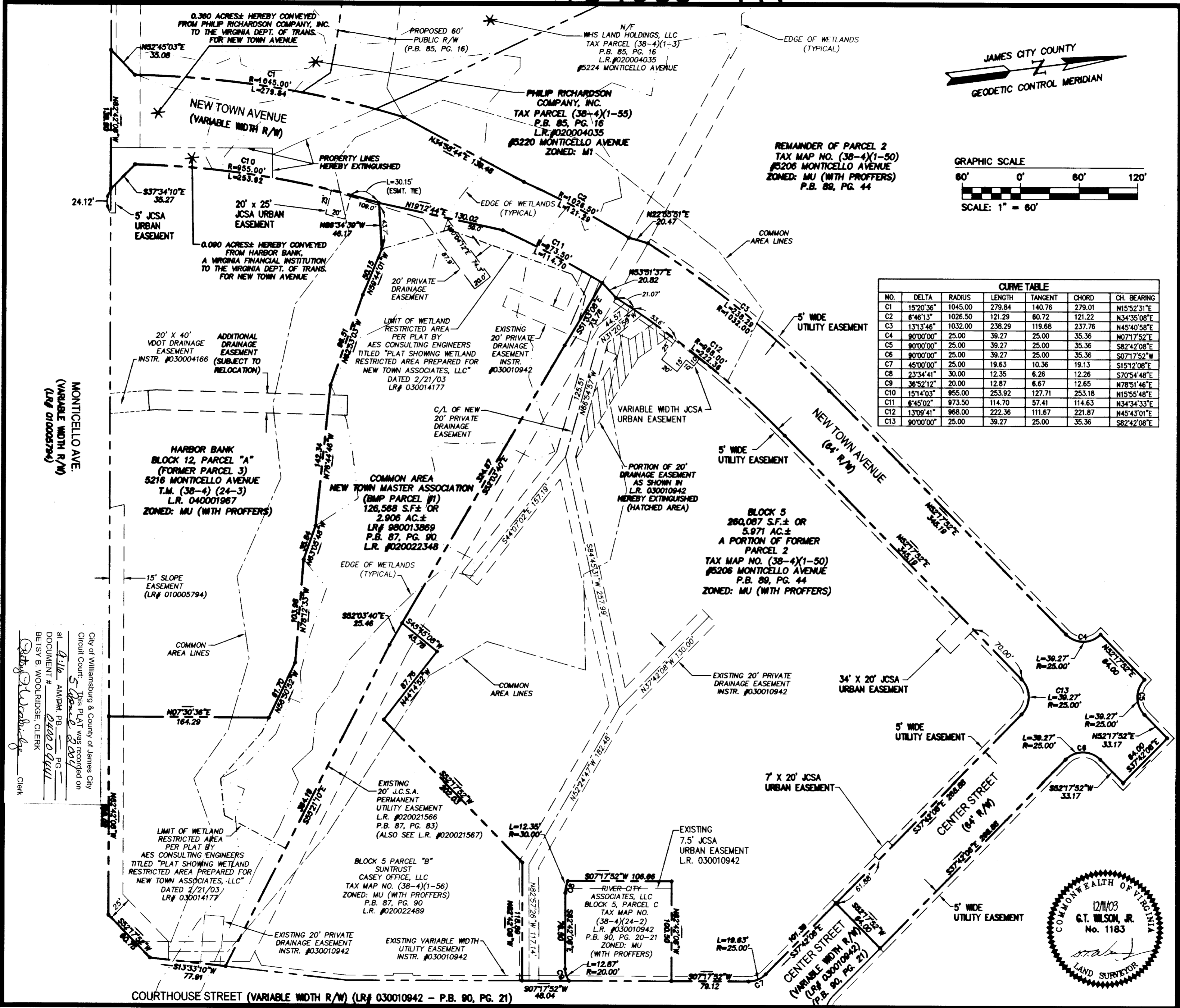


#040009441



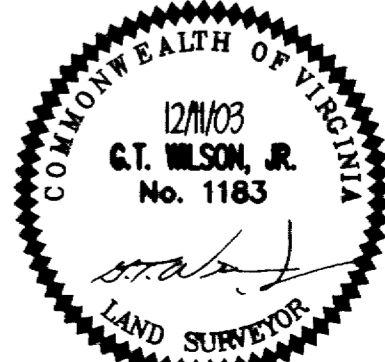
CURVE TABLE						
NO.	DELTA	RADIUS	LENGTH	TANGENT	CHORD	CH. BEARING
C1	15°20'36"	1045.00	279.84	140.76	279.01	N15°52'31"E
C2	6°46'13"	1026.50	121.29	60.72	121.22	N34°35'08"E
C3	1°13'46"	1032.00	238.29	119.68	237.76	N45°40'58"E
C4	90°00'00"	25.00	39.27	25.00	35.36	N07°17'52"E
C5	90°00'00"	25.00	39.27	25.00	35.36	S82°42'08"E
C6	90°00'00"	25.00	39.27	25.00	35.36	S07°17'52"W
C7	45°00'00"	25.00	19.63	10.36	19.13	S15°12'08"E
C8	23°34'41"	30.00	12.35	6.26	12.26	S70°54'48"E
C9	36°52'12"	20.00	12.87	6.67	12.65	N78°51'46"E
C10	15°14'03"	955.00	253.92	127.71	253.18	N15°55'48"E
C11	6°45'02"	973.50	114.70	57.41	114.63	N34°34'33"E
C12	13°09'41"	968.00	222.36	111.67	221.87	N45°43'01"E
C13	90°00'00"	25.00	39.27	25.00	35.36	S82°42'08"E

5248 Old Towne Road, Suite 1
 Williamsburg, Virginia 23188
 (757) 253-0040
 Fax (757) 220-8994



PLAT OF SUBDIVISION
 SHOWING CENTER STREET, NEW TOWN AVENUE,
 BLOCK 5, AND COMMON AREA, (BMP PARCEL #1)
 PREPARED FOR
 NEW TOWN ASSOCIATES, LLC

Designed: AES Drawn: JFS
 Scale: 1"=60' Date: 12/11/03
 Project No. 6632-E
 Drawing No. 2 OF 2



City of Williamsburg & County of James City
 Circuit Court: This Plat was recorded on
 at 1:11 AM, PM, PG. 2017
 DOCUMENT # 030010941
 Betsy B. Woolridge, Clerk
 Clerk

S:\JOB\S\030010941\030010941.DWG Plotted by: JFS Date: 12/11/03 10:11:53 AM