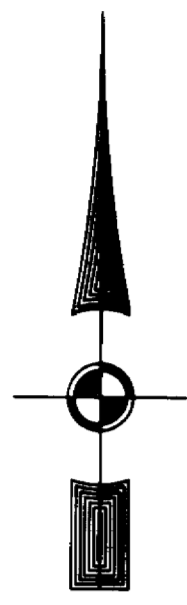


#040002868

EXIST. 20' JAMES CITY COUNTY SERVICE AUTHORITY SAN. SEWER EASEMENT AS SHOWN IN AS-BUILT LOCATION. D.B. 141 - PG. 388



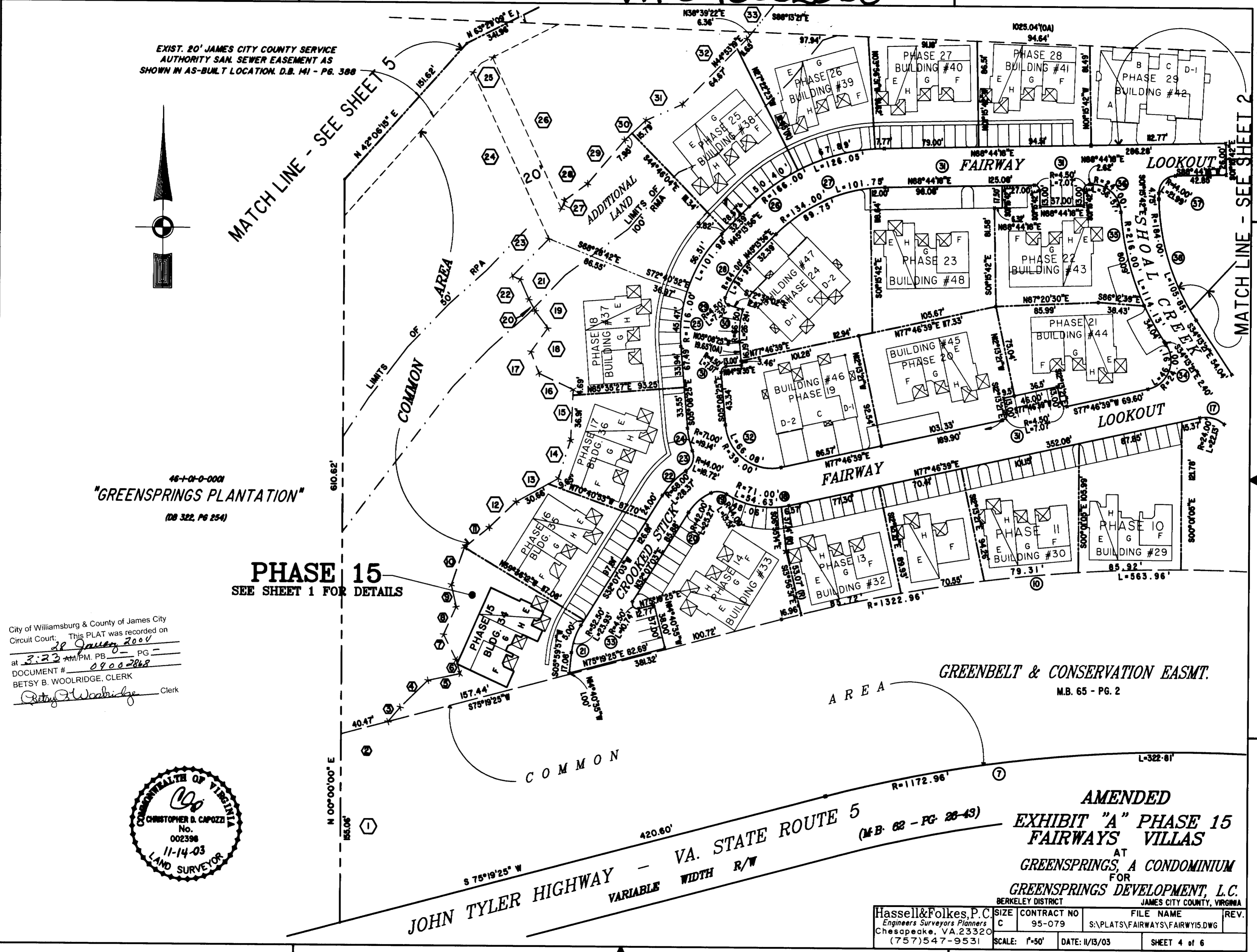
MATCH LINE - SEE SHEET 5

MATCH LINE - SEE SHEET 2

46-1-0-000 "GREENSPRINGS PLANTATION" (DB 322, PG 254)

PHASE 15 SEE SHEET 1 FOR DETAILS

City of Williamsburg & County of James City Circuit Court: This PLAT was recorded on 28 January 2004 at 3:23 AM/PM. PG. DOCUMENT # 04002868 BETSY B. WOOLRIDGE, CLERK



GREENBELT & CONSERVATION EASMT. M.B. 65 - PG. 2

JOHN TYLER HIGHWAY - VA. STATE ROUTE 5 VARIABLE WIDTH R/W

AMENDED EXHIBIT "A" PHASE 15 FAIRWAYS VILLAS AT GREENSPRINGS, A CONDOMINIUM FOR GREENSPRINGS DEVELOPMENT, L.C. BERKELEY DISTRICT JAMES CITY COUNTY, VIRGINIA

Hassell & Folkes, P.C. Engineers Surveyors Planners Chesapeake, VA. 23320 (757)547-9531	SIZE: C	CONTRACT NO: 95-079	FILE NAME: S:\PLATS\FAIRWAYS\FAIRWAY15.DWG	REV.
	SCALE: 1"=50'	DATE: 11/13/03		SHEET 4 of 6