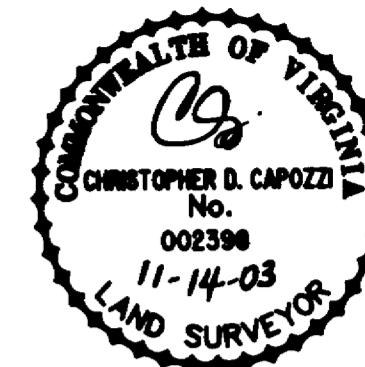


#040002868

City of Williamsburg & County of James City
Circuit Court: This PLAT was recorded on
28 January 2004
at 3:23 AM/PM, PG.
DOCUMENT # 040002868
BETSY B. WOOLRIDGE, CLERK
Betsy B. Woolridge Clerk

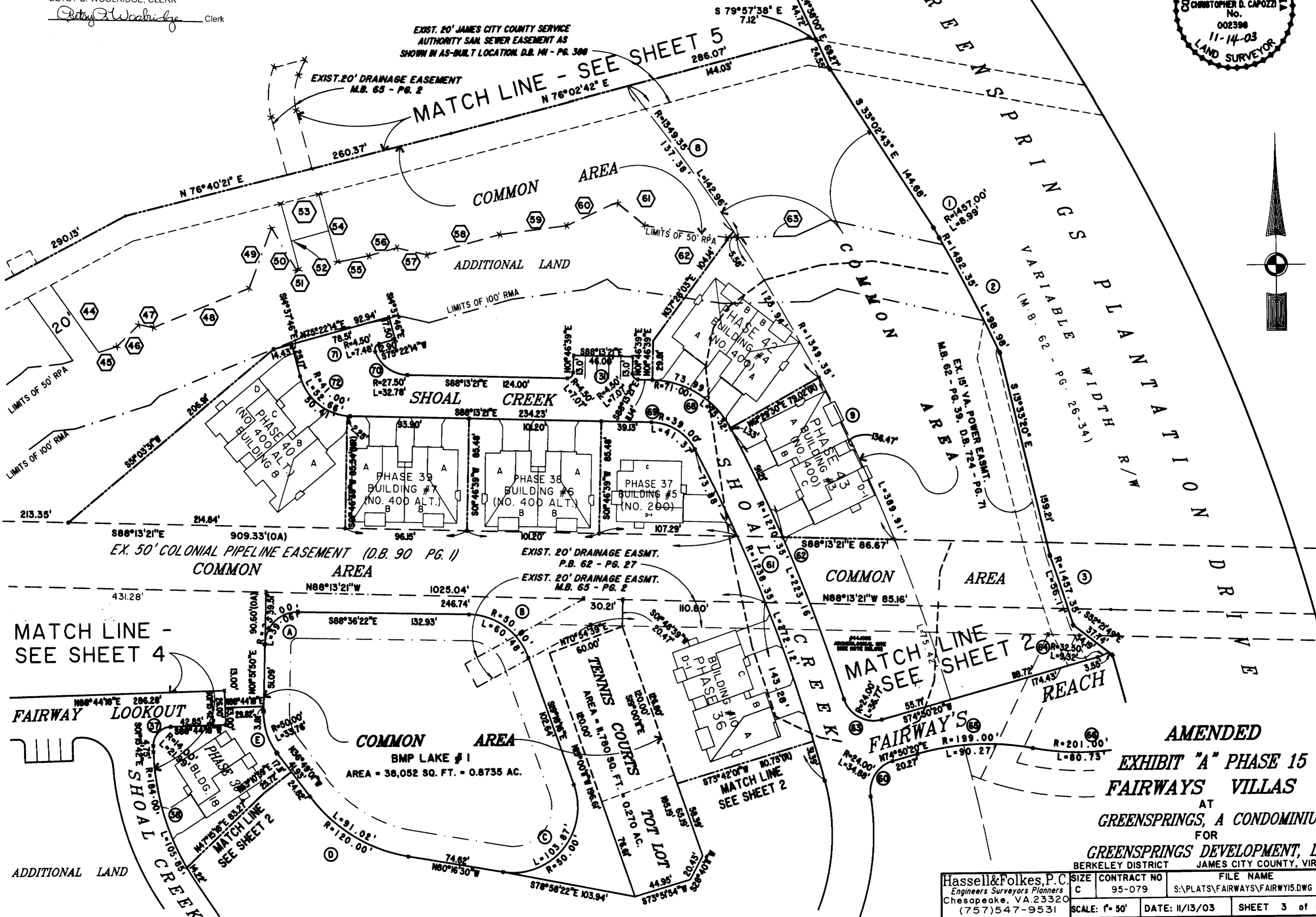
46-1-01-0-0001
"GREENSPRINGS PLANTATION"
(DB 322, PG 254)



EXIST. 20' JAMES CITY COUNTY SERVICE
AUTHORITY SAN SEWER EASEMENT AS
SHOWN IN AS-BUILT LOCATION D.B. 141 - PG. 388

EXIST. 20' DRAINAGE EASEMENT
M.B. 65 - PG. 2

MATCH LINE - SEE SHEET 5



EX. 50' COLONIAL PIPELINE EASEMENT (D.B. 90 PG. 1)
COMMON AREA

EXIST. 20' DRAINAGE EASMT.
P.B. 62 - PG. 27
EXIST. 20' DRAINAGE EASMT.
M.B. 65 - PG. 2

COMMON AREA

MATCH LINE -
SEE SHEET 4

MATCH LINE
SEE SHEET 2

COMMON AREA
BMP LAKE # 1
AREA = 38,052 SQ. FT. = 0.8735 AC.

AMENDED
EXHIBIT "A" PHASE 15
FAIRWAYS VILLAS
AT
GREENSPRINGS, A CONDOMINIUM
FOR
GREENSPRINGS DEVELOPMENT, L.C.
BERKELEY DISTRICT JAMES CITY COUNTY, VIRGINIA

Hassell & Folkes, P.C. Engineers Surveyors Planners Chesapeake, VA 23320 (757) 547-9531	SIZE C	CONTRACT NO 95-079	FILE NAME S:\PLATS\FAIRWAYS\FAIRWY15.DWG	REV.
SCALE: 1" = 50'		DATE: 11/13/03	SHEET 3 of 6	