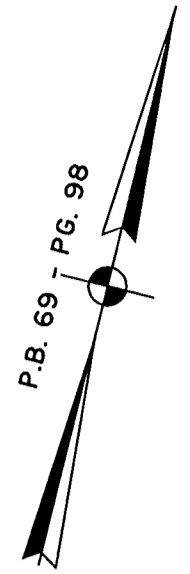
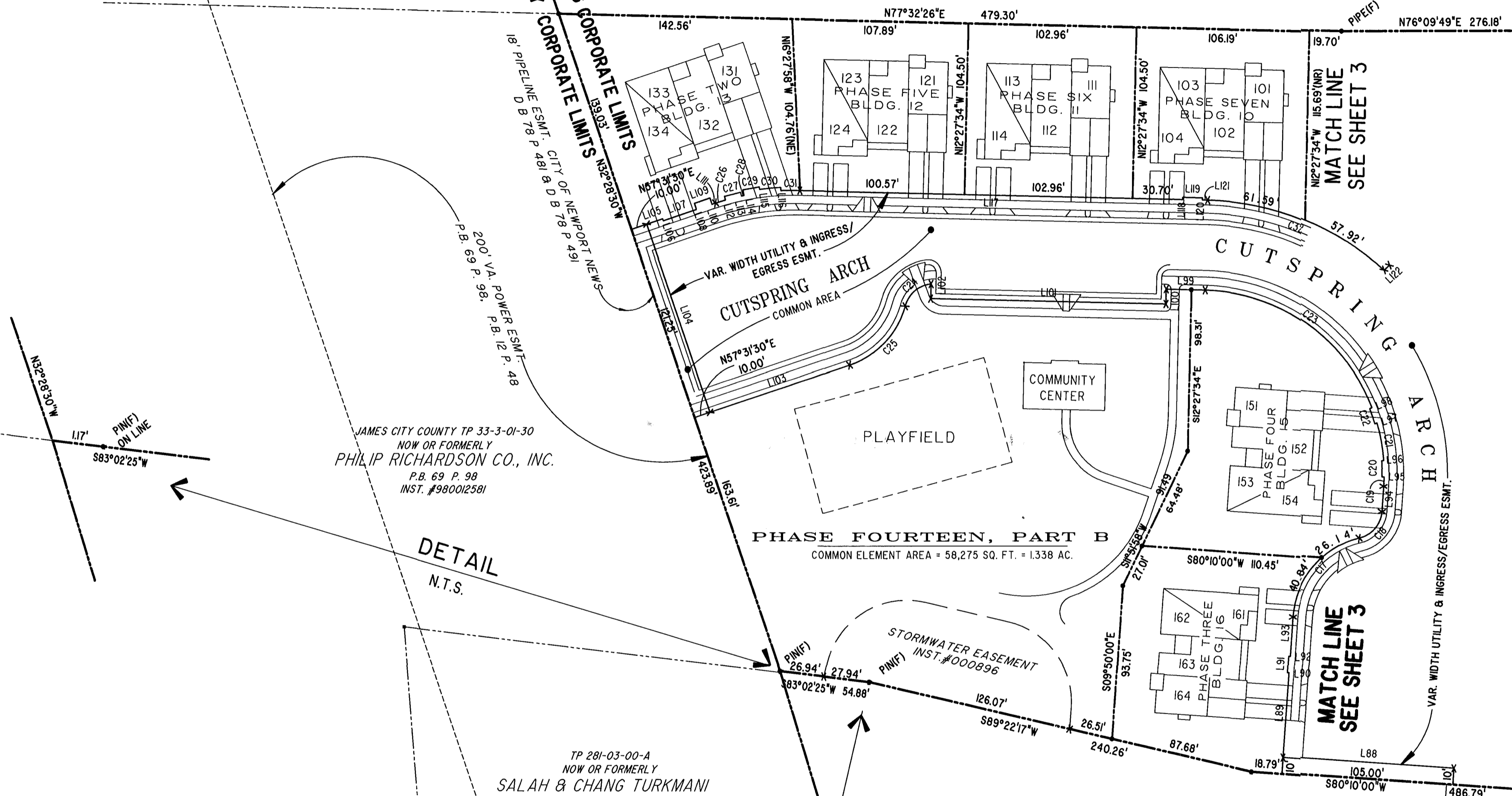


#032595



JAMES CITY COUNTY TP 33-3-01-27
 NOW OR FORMERLY
 ARTCRAFT - STRATFORD, L.C.
 D.B.649 P.470

CITY OF WILLIAMSBURG CORPORATE LIMITS
 JAMES CITY COUNTY CORPORATE LIMITS



JAMES CITY COUNTY TP 33-3-01-30
 NOW OR FORMERLY
 PHILIP RICHARDSON CO., INC.
 P.B. 69 P. 98
 INST. #980012581

PHASE FOURTEEN, PART B
 COMMON ELEMENT AREA = 58,275 SQ. FT. = 1.338 AC.

TP 281-03-00-A
 NOW OR FORMERLY
 SALAH & CHANG TURKMANI
 D.B. 94 P. 92

TP 281-10-00-B
 NOW OR FORMERLY
 752 L.L.C.
 INST. #980305

City of Williamsburg & County of James City
 Circuit Court: This PLAT was recorded on
 11-13-2003
 at 2:15 PM, P.B. PG
 DOCUMENT # 032595
 BETSY B. WOOLRIDGE, CLERK
Betsy B. Woolridge Clerk

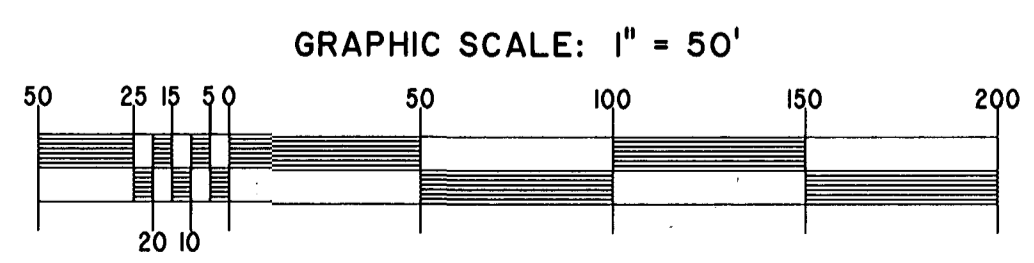


EXHIBIT "A"
 CLAIBORNE
 (A CONDOMINIUM COMMUNITY)
 PHASE EIGHTEEN

CITY OF WILLIAMSBURG, VIRGINIA		SIZE	CONTRACT NO	FILE NAME	REV.
Hassell&Folkes, P.C. Engineers Surveyors Planners Chesapeake, VA. 23320 (757)547-9531		C		S:\PROJECTS\CLAIBORNE\ PH-18-BLDG-23.DWG	
SCALE: 1" = 50'		DATE: 10/23/03		SHEET 4 of 5	

A-1520

A-1520