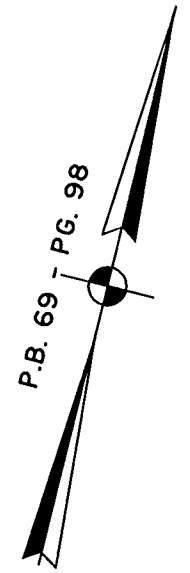
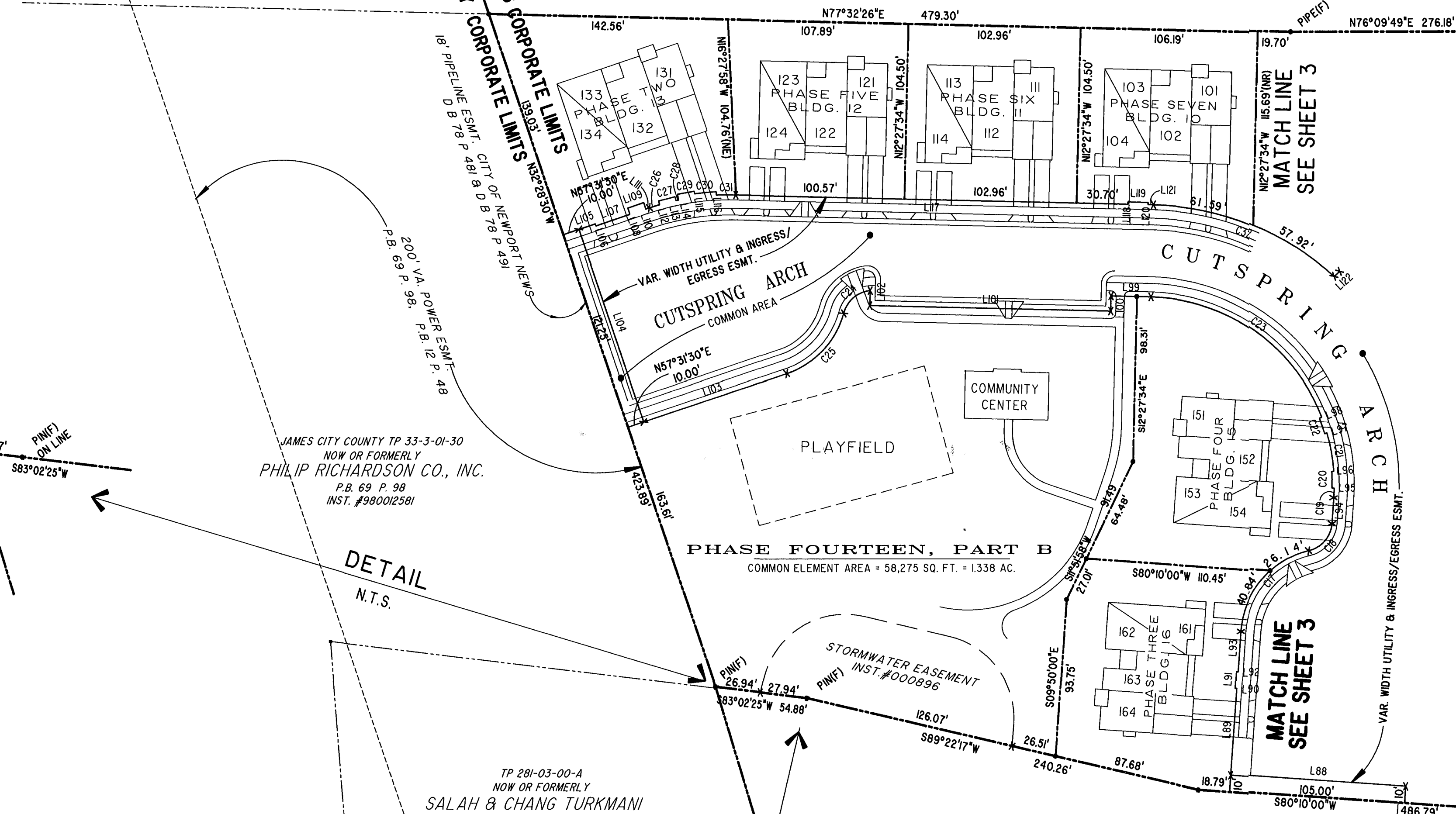


#032595

JAMES CITY COUNTY TP 33-3-01-27
NOW OR FORMERLY
ARTCRAFT - STRATFORD, L.C.
D.B.649 P.470



CITY OF WILLIAMSBURG CORPORATE LIMITS
JAMES CITY COUNTY CORPORATE LIMITS



JAMES CITY COUNTY TP 33-3-01-30
NOW OR FORMERLY
PHILIP RICHARDSON CO., INC.
P.B. 69 P. 98
INST. #980012581

TP 281-03-00-A
NOW OR FORMERLY
SALAH & CHANG TURKMANI
D.B. 94 P. 92

TP 281-10-00-B
NOW OR FORMERLY
752 L.L.C.
INST. #980305

TP 282-08-00-001
NOW OR FORMERLY
752 L.L.C.
INST. #980305

City of Williamsburg & County of James City
Circuit Court: This PLAT was recorded on
11-13-2003
at 2:15 PM, P.B. PG
DOCUMENT # 032595
BETSY B. WOOLRIDGE, CLERK
Betsy B. Woolridge Clerk

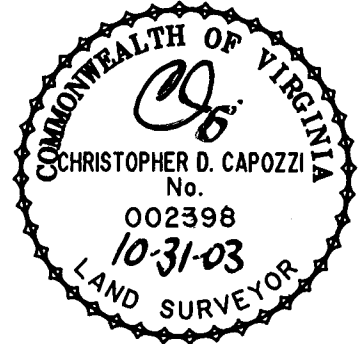
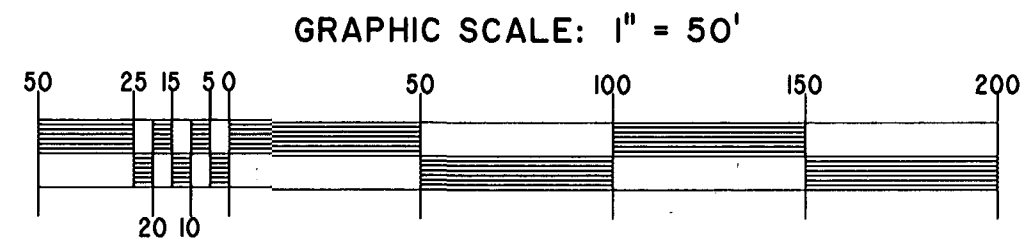


EXHIBIT "A"
CLAIBORNE
(A CONDOMINIUM COMMUNITY)
PHASE EIGHTEEN

CITY OF WILLIAMSBURG, VIRGINIA		FILE NAME	REV.
Hassell&Folkes, P.C. Engineers Surveyors Planners Chesapeake, VA. 23320 (757)547-9531	SIZE CONTRACT NO C	S:\PROJECTS\CLAIBORNE\ PH-18-BLDG-23.DWG	
SCALE: 1" = 50'	DATE: 10/23/03	SHEET 4 of 5	

A-1520

A-1520