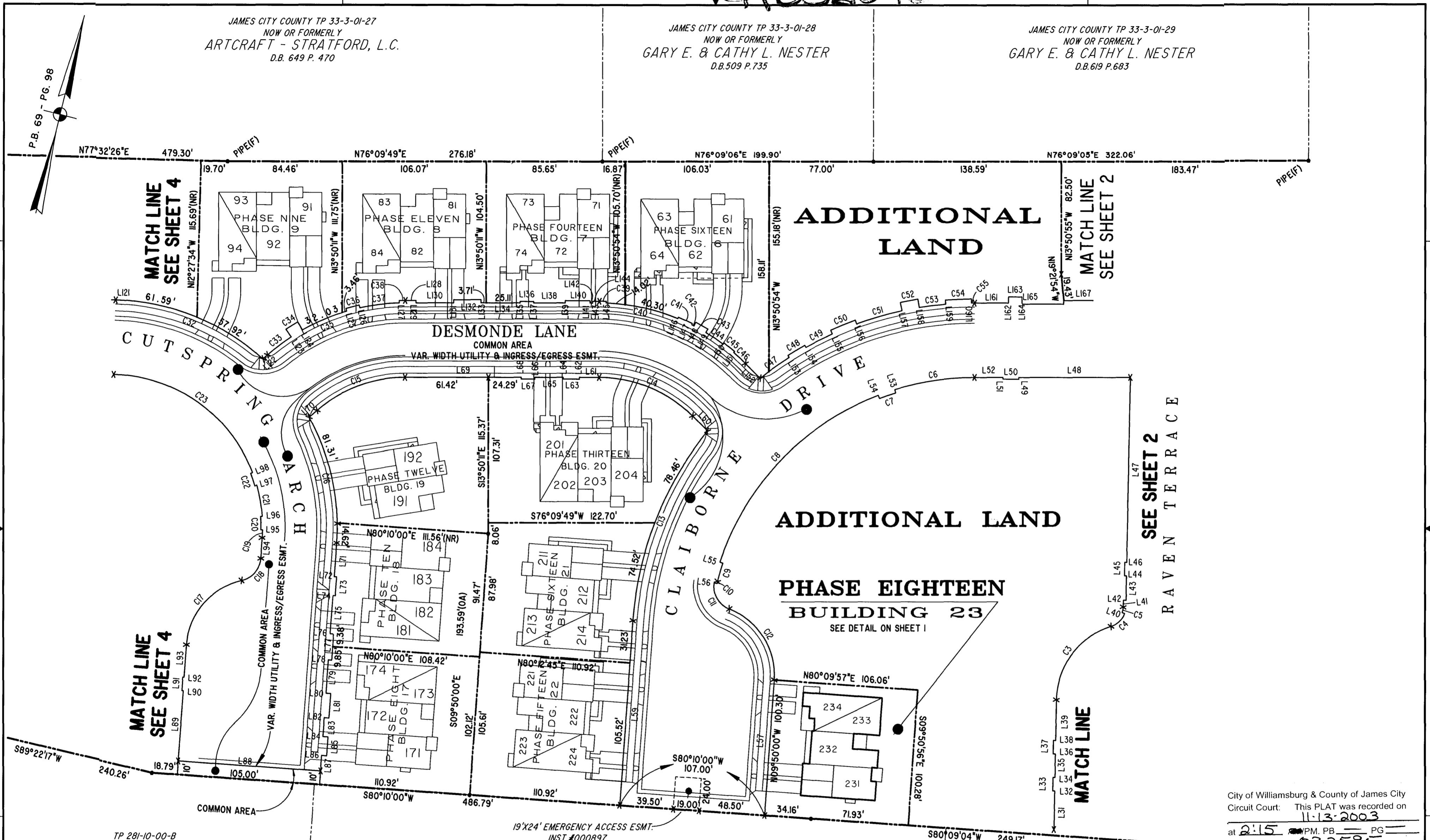
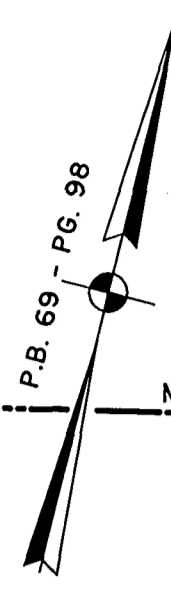


#032595

JAMES CITY COUNTY TP 33-3-01-27
NOW OR FORMERLY
ARTCRAFT - STRATFORD, L.C.
D.B. 649 P. 470

JAMES CITY COUNTY TP 33-3-01-28
NOW OR FORMERLY
GARY E. & CATHY L. NESTER
D.B. 509 P. 735

JAMES CITY COUNTY TP 33-3-01-29
NOW OR FORMERLY
GARY E. & CATHY L. NESTER
D.B. 619 P. 683



MATCH LINE
SEE SHEET 4

MATCH LINE
SEE SHEET 4

MATCH LINE

MATCH LINE
SEE SHEET 2

SEE SHEET 2
RAVEN TERRACE

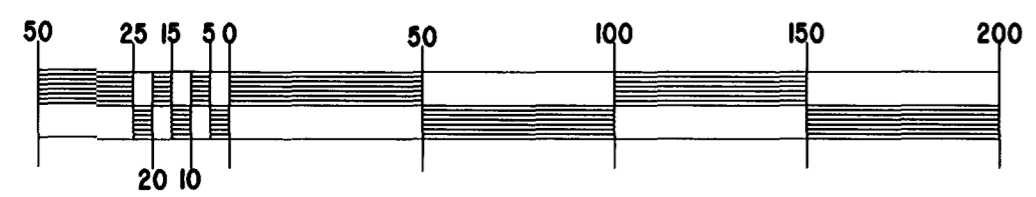
TP 281-10-00-B
NOW OR FORMERLY
752 L.L.C.
INST. #980305

TP 282-08-00-001
NOW OR FORMERLY
752 L.L.C.
INST. #980305

TP 281-10-00-B
NOW OR FORMERLY
752 L.L.C.
INST. #980305

TP 282-08-00-001
NOW OR FORMERLY
752 L.L.C.
INST. #980305

GRAPHIC SCALE: 1" = 50'



City of Williamsburg & County of James City
Circuit Court: This PLAT was recorded on
11-13-2003
at 2:15 P.M. PB PG
DOCUMENT # 032595
BETSY B. WOOLRIDGE, CLERK

EXHIBIT "A"

CLAIBORNE
(A CONDOMINIUM COMMUNITY)
PHASE EIGHTEEN

CITY OF WILLIAMSBURG, VIRGINIA		FILE NAME	REV.
Hassell&Folkes, P.C. Engineers Surveyors Planners Chesapeake, VA. 23320 (757)547-9531	SIZE C	S:\PROJECTS\CLAIBORNE\ PH-18-BLDG-23.DWG	
SCALE: 1" = 50'	DATE: 10/23/03	SHEET 3 of 5	