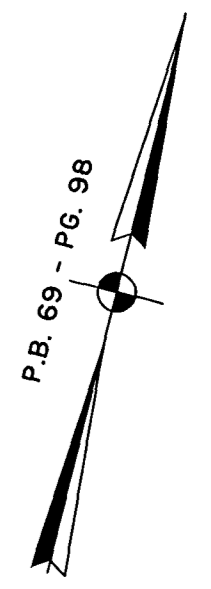


#032595 ↓



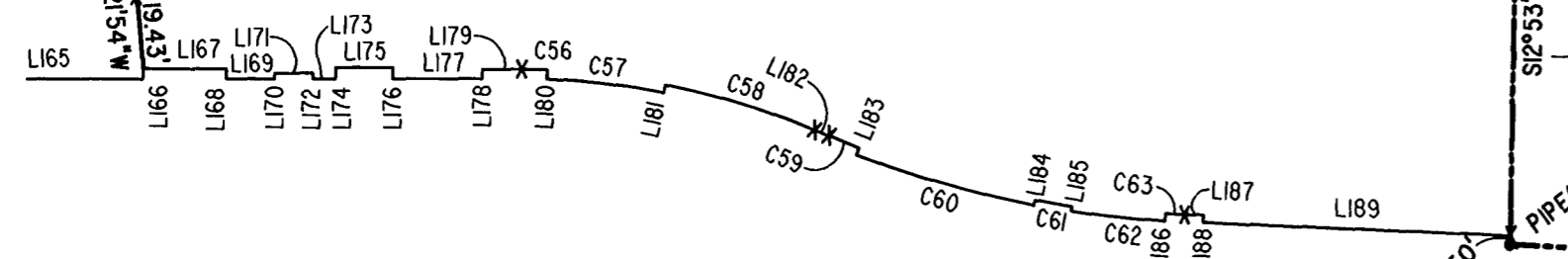
P.B. 69 - PG. 98

JAMES CITY COUNTY TP 33-3-01-29
NOW OR FORMERLY
GARY E. & CATHY L. NESTER
D.B.619 P.683

JAMES CITY COUNTY TP 33-3-01-24
NOW OR FORMERLY
GOLDEN KNIGHTS, INC.
D.B.568 P.316

MATCH LINE
SEE SHEET 3

ADDITIONAL LAND



MATCH LINE
SEE SHEET 3

RAVEN TERRACE
VAR. WIDTH UTILITY & INGRESS/EGRESS ESMT.
COMMON AREA

ADDITIONAL LAND

CLAIBORNE DRIVE
VAR. WIDTH UTILITY & INGRESS/EGRESS ESMT.
COMMON AREA

COMMON AREA - PHASE ONE

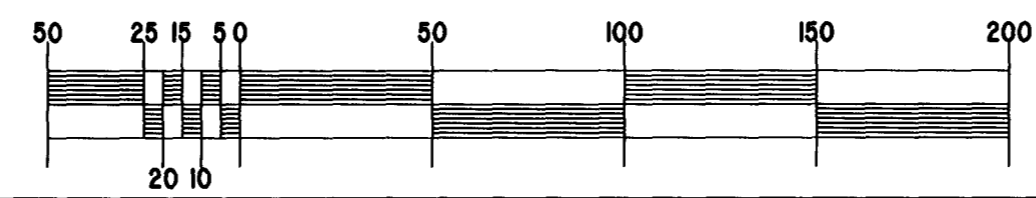
TP 282-05-00-001
NOW OR FORMERLY
CHELSEA GCA REALTY PARTNERSHIP, L.P.
D.B.113 P.693

TP 282-04-00-001
NOW OR FORMERLY
CHELSEA GCA REALTY PARTNERSHIP, L.P.
D.B.106 P.407

TP 282-08-00-001
NOW OR FORMERLY
752 L.L.C.
INST. #980305

City of Williamsburg & County of James City
Circuit Court: This PLAT was recorded on
11-13-2003
at 2:15 PM, P.B. PG
DOCUMENT # 032595
BETSY B. WOOLRIDGE, CLERK
Betsy B. Woolridge Clerk

GRAPHIC SCALE: 1" = 50'



U.S. RTE. 60
RICHMOND ROAD

P.B. 69 - PG. 98

EXHIBIT "A"
CLAIBORNE
(A CONDOMINIUM COMMUNITY)
PHASE EIGHTEEN

CITY OF WILLIAMSBURG, VIRGINIA		SIZE C	CONTRACT NO	FILE NAME	REV.
Hassell & Folkes, P.C. Engineers Surveyors Planners Chesapeake, VA. 23320 (757) 547-9531		SCALE: 1" = 50'	DATE: 10/23/03	S:\PROJECTS\CLAIBORNE\ PH-18-BLDG-23.DWG	SHEET 2 of 5

A-1520

A-1520