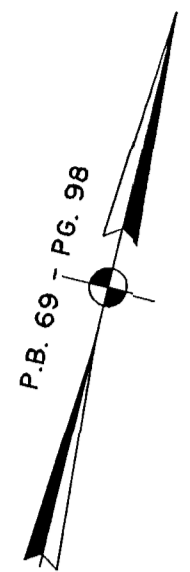


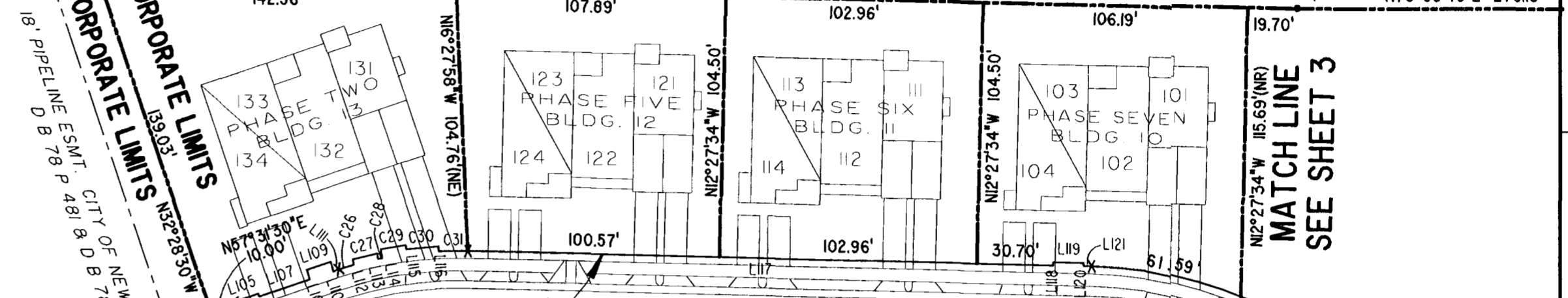
#032351



P.B. 69 P.G. 98

JAMES CITY COUNTY TP 33-3-01-27
NOW OR FORMERLY
ARTCRAFT - STRATFORD, L.C.
D.B. 649 P. 470

CITY OF WILLIAMSBURG CORPORATE LIMITS
JAMES CITY COUNTY CORPORATE LIMITS



JAMES CITY COUNTY TP 33-3-01-30
NOW OR FORMERLY
PHILIP RICHARDSON CO., INC.
P.B. 69 P. 98
INST. #980012581

DETAIL
N.T.S.

PHASE FOURTEEN, PART B
COMMON ELEMENT AREA = 58,275 SQ. FT. = 1,338 AC

TP 281-03-00-A
NOW OR FORMERLY
SALAH & CHANG TURKMANI
D.B. 94 P. 92

DETAIL
N.T.S.

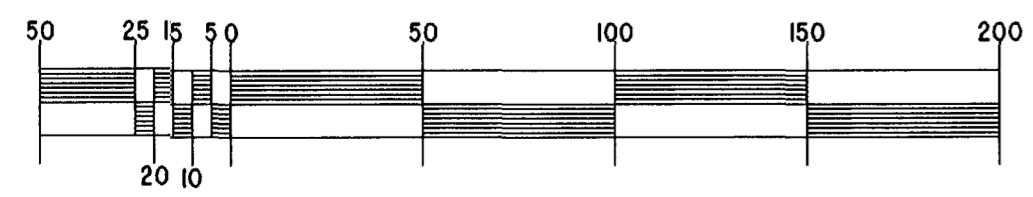
TP 281-10-00-B
NOW OR FORMERLY
752 L.L.C.
INST. #980305

City of Williamsburg & County of James City
Circuit Court: This PLAT was recorded on
17 October 2003
at 10:57 AM/PM P.B. PG.
DOCUMENT # 032351
BETSY B. WOOLRIDGE, CLERK
Betsy B. Woolridge Clerk

EXHIBIT "A"
CLAIBORNE
(A CONDOMINIUM COMMUNITY)
PHASE SIXTEEN
CITY OF WILLIAMSBURG, VIRGINIA



GRAPHIC SCALE: 1" = 50'



Hassell & Folkes, P.C. Engineers Surveyors Planners Chesapeake, VA 23320 (757) 547-9531	SIZE C	CONTRACT NO	FILE NAME S:\PROJECTS\CLAIRBORNE\PH16-BLDG-6.DWG	REV.
SCALE: 1" = 50'	DATE: 10/03/03	SHEET 4 of 5		

A-1520

A-1520