

#032351

JAMES CITY COUNTY TP 33-3-01-27
NOW OR FORMERLY
ARTCRAFT - STRATFORD, L.C.
D.B. 649 P. 470

JAMES CITY COUNTY TP 33-3-01-28
NOW OR FORMERLY
GARY E. & CATHY L. NESTER
D.B. 509 P. 735

JAMES CITY COUNTY TP 33-3-01-29
NOW OR FORMERLY
GARY E. & CATHY L. NESTER
D.B. 619 P. 683

**PHASE SIXTEEN
BUILDING 6**
SEE DETAIL ON SHEET 1

**ADDITIONAL
LAND**

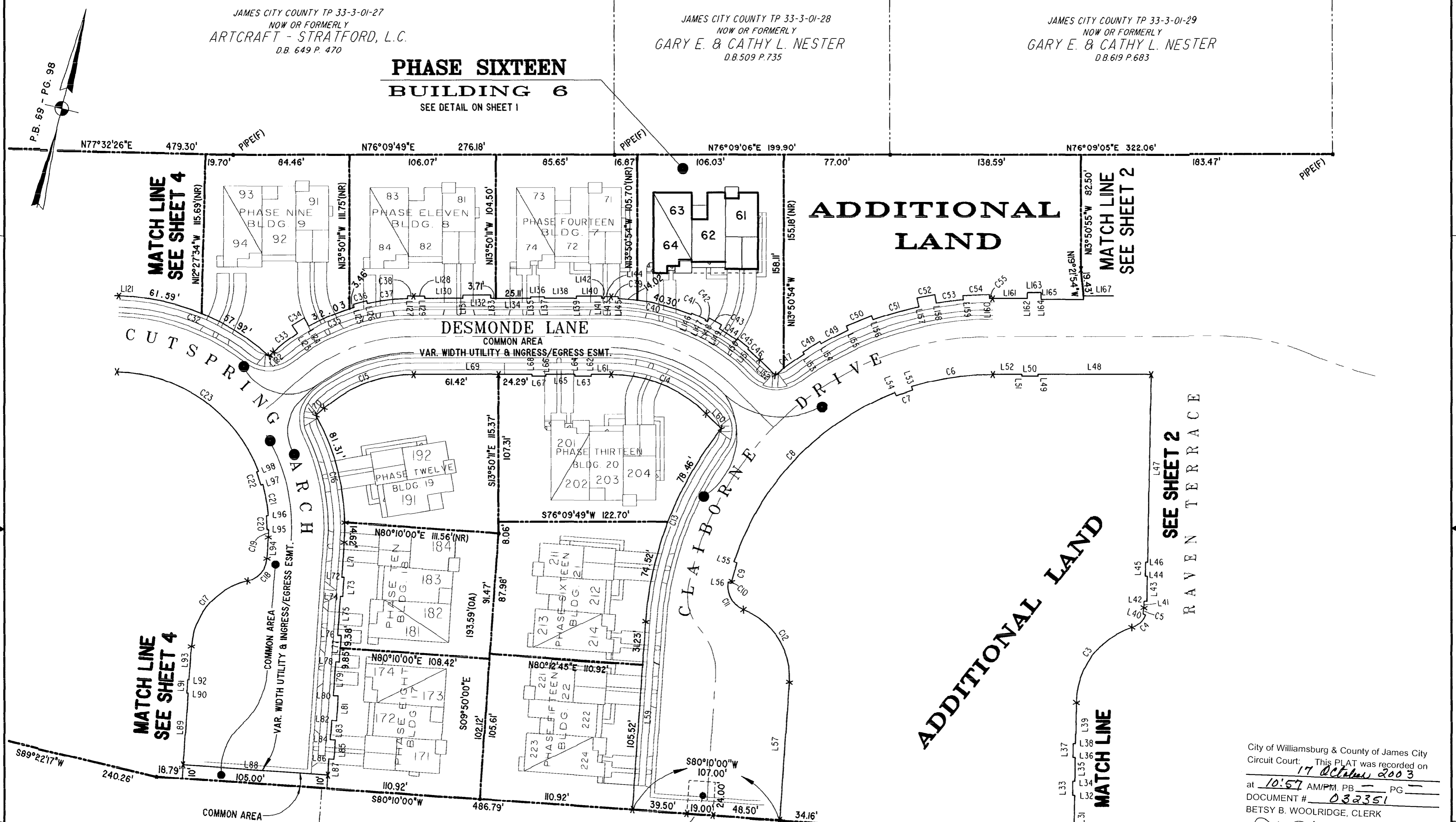
**ADDITIONAL
LAND**

SEE SHEET 2

**MATCH LINE
SEE SHEET 2**

**MATCH LINE
SEE SHEET 4**

**MATCH LINE
SEE SHEET 4**

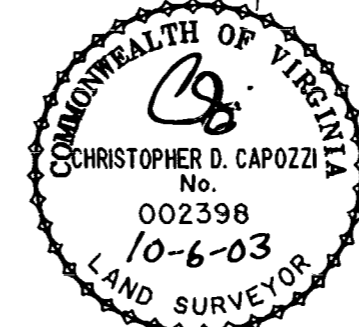


City of Williamsburg & County of James City
Circuit Court: This PLAT was recorded on
17 October 2003
at 10:57 AM/PM. PB PG
DOCUMENT # 032351
BETSY B. WOOLRIDGE, CLERK
Betsy B. Woolridge Clerk

EXHIBIT "A"
CLAIBORNE
(A CONDOMINIUM COMMUNITY)
PHASE SIXTEEN

CITY OF WILLIAMSBURG, VIRGINIA

Hassell & Folkes, P.C. Engineers Surveyors Planners Chesapeake, VA 23320 (757) 547-9531	SIZE C	CONTRACT NO	FILE NAME S:\PROJECTS\CLAIBORNE\ \PH-16-BLDG-6.DWG	REV.
SCALE: 1" = 50'	DATE: 10/03/03	SHEET 3 of 5		



TP 281-10-00-B
NOW OR FORMERLY
752 L.L.C.
INST. #980305

TP 282-08-00-001
NOW OR FORMERLY
752 L.L.C.
INST. #980305

TP 281-10-00-B
NOW OR FORMERLY
752 L.L.C.
INST. #980305

TP 282-08-00-001
NOW OR FORMERLY
752 L.L.C.
INST. #980305

GRAPHIC SCALE: 1" = 50'

