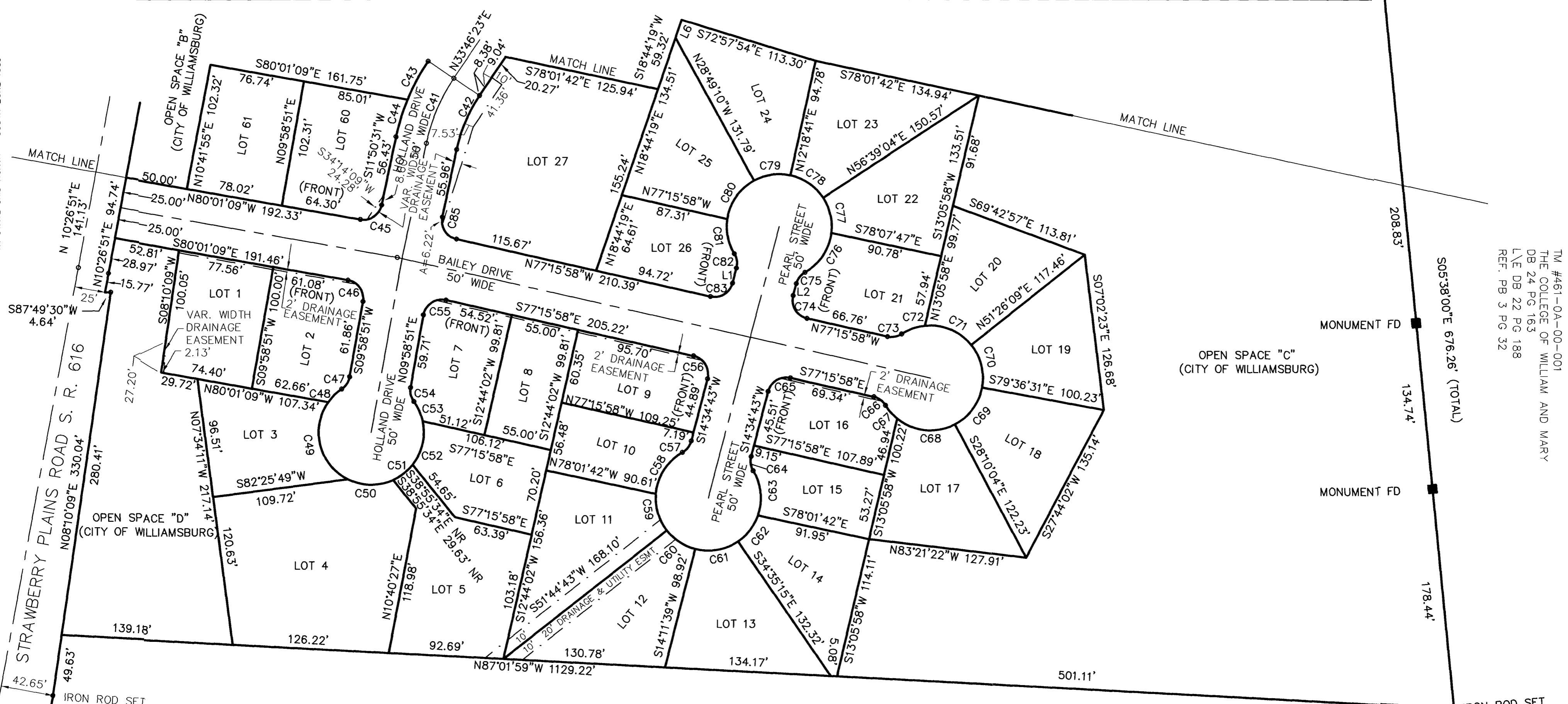


# #032019

VA STATE GRID NORTH - SOUTH ZONE 1983



TM #461-0A-00-001  
 THE COLLEGE OF WILLIAM AND MARY  
 DB 24 PG 163  
 L\VE DB 22 PG 188  
 REF. PB 3 PG 32

AREA TABLE:

LOT	SQ FT	LOT	SQ FT	LOT	SQ FT
1	7598	26	6475	51	6022
2	7426	27	20681	52	5095
3	7791	28	6930	53	5095
4	19172	29	6675	54	5952
5	11224	30	5094	55	6876
6	6630	31	5246	56	7299
7	6562	32	6522	57	7308
8	5490	33	6294	58	11792
9	6600	34	8039	59	11794
10	5494	35	9086	60	8220
11	9442	36	8063	61	7917
12	8480	37	9774	62	5095
13	8533	38	7075	63	17688
14	7196	39	6416	64	314136
15	5369	40	5705	65	28952
16	6258	41	6301	66	30428
17	8523	42	5062		
18	8407	43	5578		
19	7867	44	5353		
20	7577	45	5552		
21	7108	46	5232		
22	8082	47	5568		
23	8563	48	DELETED		
24	8095	49	DELETED		
25	7962	50	8196		

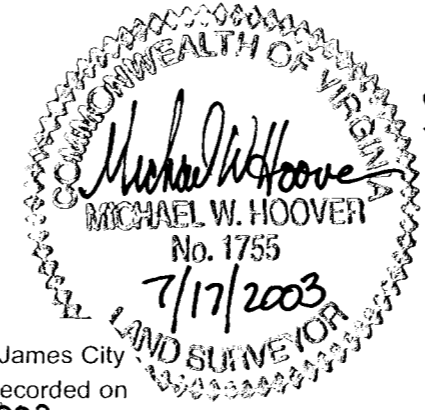
SCALE: 1" = 60'

TAX PARCEL 491-A-19  
 HEIRS OF SARAH ANN BAILEY  
 WB 6 PG 483  
 DB 37 PG 447

## PLAT SHOWING STRAWBERRY PLAINS SUBDIVISION

CITY OF WILLIAMSBURG, VIRGINIA  
**Dewberry & Davis, Inc.**  
 A Dewberry Company

9881 Mayland Drive, Suite 201  
 Richmond, Virginia 23233  
 (804) 290-7957 FAX (804)-290-7928  
 www.dewberry.com  
 Architects  
 Engineers  
 Planners  
 Surveyors



City of Williamsburg & County of James City  
 Circuit Court: This PLAT was recorded on  
 September 9, 2003  
 at 2:42 AM/PM, PB \_\_\_\_\_ PG \_\_\_\_\_  
 DOCUMENT # 032019  
 BETSY B. WOOLRIDGE, CLERK  
 Betsy B. Woolridge Clerk

DATE: 03-14-2001  
 LAST REVISED: 07-17-2003

SHEET 3 OF 4

PFA-501