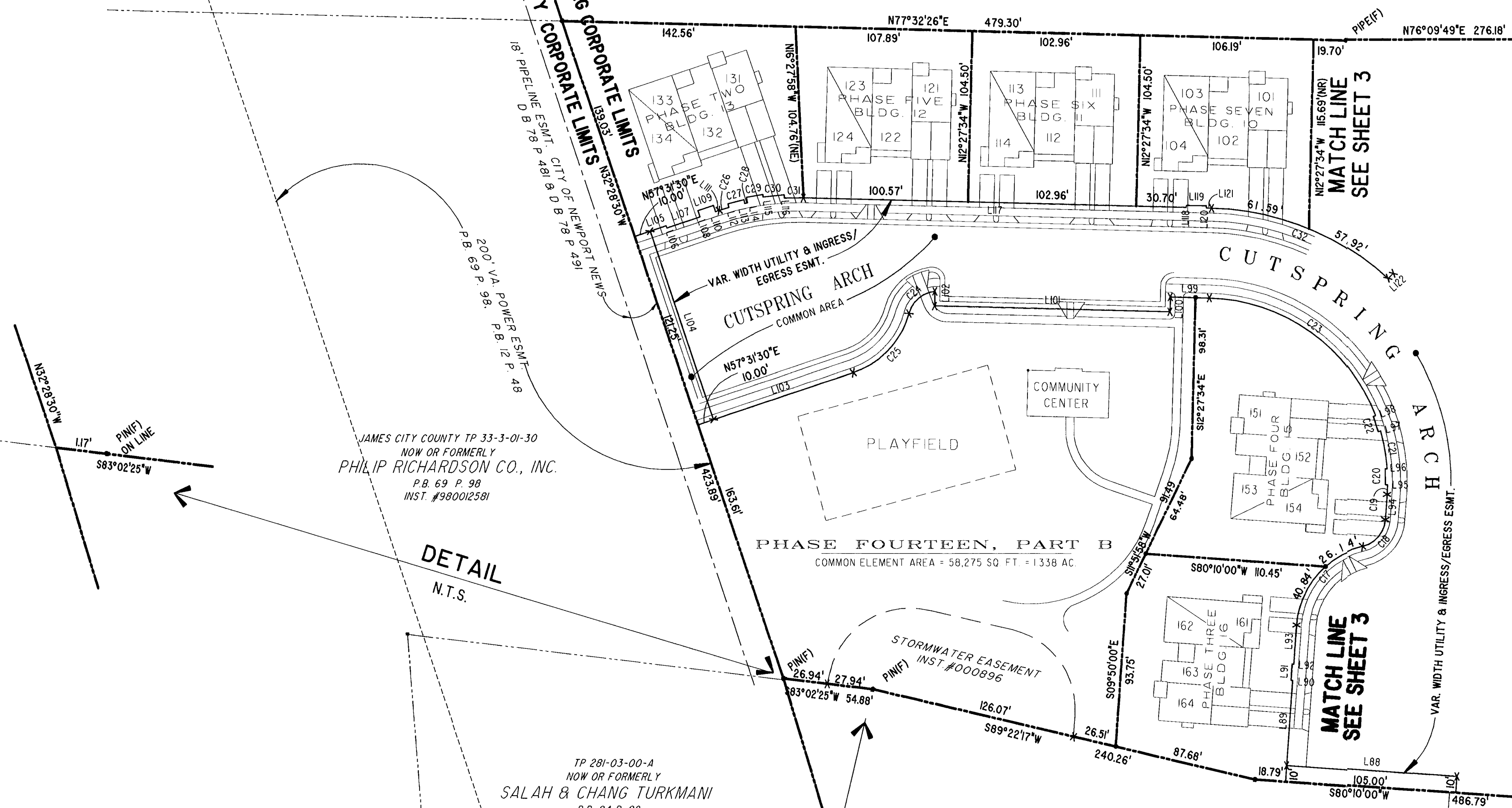


JAMES CITY COUNTY TP 33-3-01-27  
NOW OR FORMERLY  
ARTCRAFT - STRATFORD, L.C.  
D.B. 649 P. 470

JAMES CITY COUNTY CORPORATE LIMITS  
CITY OF WILLIAMSBURG CORPORATE LIMITS



JAMES CITY COUNTY TP 33-3-01-30  
NOW OR FORMERLY  
PHILIP RICHARDSON CO., INC.  
P.B. 69 P. 98  
INST. #980012581

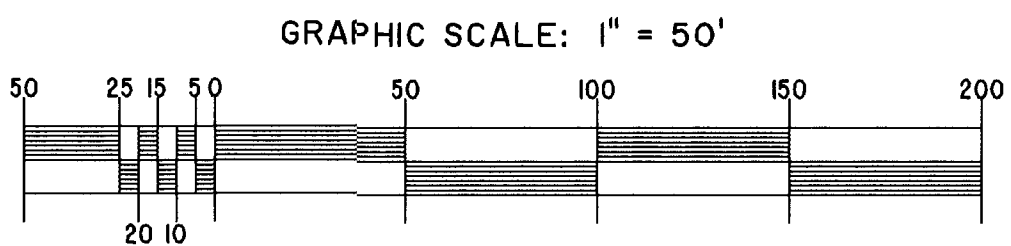
TP 281-03-00-A  
NOW OR FORMERLY  
SALAH & CHANG TURKMANI  
D.B. 94 P. 92

TP 281-10-00-B  
NOW OR FORMERLY  
752 L.L.C.  
INST. #980305

TP 282-08-00-001  
NOW OR FORMERLY  
752 L.L.C.  
INST. #980305

City of Williamsburg & County of James City  
Circuit Court: This PLAT was recorded on  
29 August 2003  
at 3:25 AM/PM, P.B. 91 PG 44-48  
DOCUMENT # 031942  
BETSY B. WOOLRIDGE, CLERK  
*Betsy B. Woolridge* Clerk

**EXHIBIT "A"**  
**CLAIBORNE**  
(A CONDOMINIUM COMMUNITY)  
**PHASE SEVENTEEN**



Hassell & Folkes, P.C. Engineers Surveyors Planners Chesapeake, VA 23320 (757) 547-9531		SIZE C	CONTRACT NO	FILE NAME S:\PLATS\CLAIBORNE\PH-15-81.DG-22.DWG	REV.
SCALE: 1" = 50'		DATE: 08/18/03		SHEET 4 of 5	