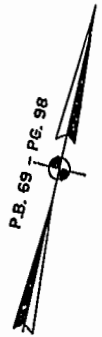


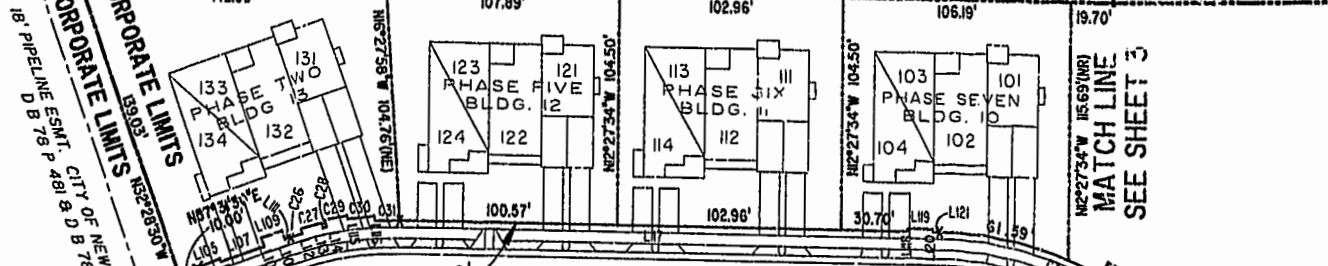
#030578

89 PAGE 89



JAMES CITY COUNTY TP 33-3-01-27
NOW OR FORMERLY
ARTCRAFT - STRATFORD, L.C.
D.B.649 P.470

CITY OF WILLIAMSBURG CORPORATE LIMITS
JAMES CITY COUNTY CORPORATE LIMITS



MATCH LINE
SEE SHEET 3

18" PIPELINE ESMT. CITY OF NEWPORT NEWS
D B 78 P 481 & D B 78 P 481

200' V.A. POWER ESMT. P.B. 69 P. 98. P.B. 12 P. 48

CUTSPRING ARCH
COMMON AREA
VAR. WIDTH UTILITY & INGRESS/EGRESS ESMT.

CUTSPRING ARCH
VAR. WIDTH UTILITY & INGRESS/EGRESS ESMT.

JAMES CITY COUNTY TP 33-3-01-3
NOW OR FORMERLY
PHILIP RICHARDSON CO., INC.
P.B. 69 P. 98
INST. #980012501

ADDITIONAL LAND

DETAIL
N.T.S.

STORMWATER EASEMENT
INST. #000696

TP 201-03-00-A
NOW OR FORMERLY
SALAH & CHANG TURKMAN
D.B. 94 P. 92

TP 201-10-00-B
NOW OR FORMERLY
752 L.L.C.
INST. #980305

TP 202-05-00-001
NOW OR FORMERLY
752 L.L.C.
INST. #980305

City of Williamsburg & County of James City
Circuit Court: This PLAT was recorded on
19 March 2003
at 11:13 AM/PM, PB 89 PAGE 92
DOCUMENT # 030578
BETSY B. WOOLRIDGE, CLERK
Betsy Woolridge Dep. Clerk

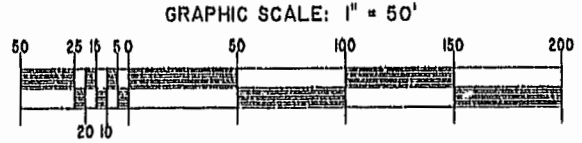


EXHIBIT "A"
CLAIBORNE
(A CONDOMINIUM COMMUNITY)
PHASE THIRTEEN

Hassell & Folkes, P.C. Engineers & Surveyors Chesapeake, VA 23320 (757) 547-9531	SIZE	CONTRACT NO.	FILE NAME	REV.
	C		S:\PLATS\CLAIBORNE\PH-13-BLDG-20000	
SCALE: 1" = 50'		DATE: 02/13/03	SHEET 4 of 5	

A-1520

A-1520