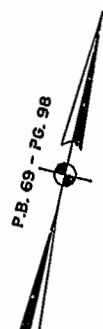


030544

89 PAGE 82

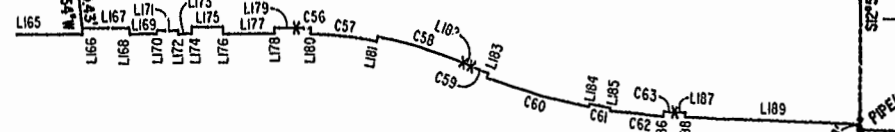
JAMES CITY COUNTY TP 33-3-01-29
NOW OR FORMERLY
GARY E. & CATHY L. NESTER
D.B.619 P.683

JAMES CITY COUNTY TP 33-3-01-24
NOW OR FORMERLY
GOLDEN KNIGHTS, INC.
D.B.568 P.316



MATCH LINE
SEE SHEET 3

ADDITIONAL LAND



MATCH LINE

SEE SHEET 3

RAVEN TERRACE
VAR. WIDTH UTILITY & INGRESS/EGRESS ESMT.
COMMON AREA

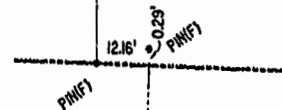
ADDITIONAL LAND

CLAIBORNE DRIVE
VAR. WIDTH UTILITY & INGRESS/EGRESS ESMT.
COMMON AREA

CHELSEA GCA REALTY PARTNERSHIP, L.P.
TP 282-04-00-001
NOW OR FORMERLY
D.B.106 P.407

CHELSEA GCA REALTY PARTNERSHIP, L.P.
TP 282-05-00-001
NOW OR FORMERLY
D.B.113 P.693

DETAIL
N.T.S.

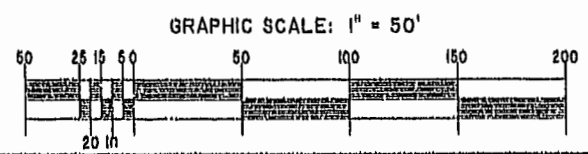


U.S. RTE. 60
RICHMOND ROAD

P.B. 69 - PG. 98

City of Williamsburg & County of James City
Circuit Court: This PLAT was recorded on
MARCH 12, 2003
at 1:32 AM P.M. PB 89 PG 81-85
DOCUMENT # 030544
BETSY B. WOOLRIDGE, CLERK
Betsy Woolridge Clerk

EXHIBIT "A"
CLAIBORNE
(A CONDOMINIUM COMMUNITY)
PHASE TWELVE



CITY OF WILLIAMSBURG, VIRGINIA			
SIZE	CONTRACT NO.	FILE NAME	REV.
C	002398	S:\PLATS\CLAIORNE\PH-12-8L00-19.DWG	
Hassell & Folkes, P.C. Engineers Surveyors Planners Chesapeake, VA 23320 (757) 547-9531		SCALE: 1" = 50'	DATE: 02/13/03
		SHEET 2 of 5	

A-1520

A-1520