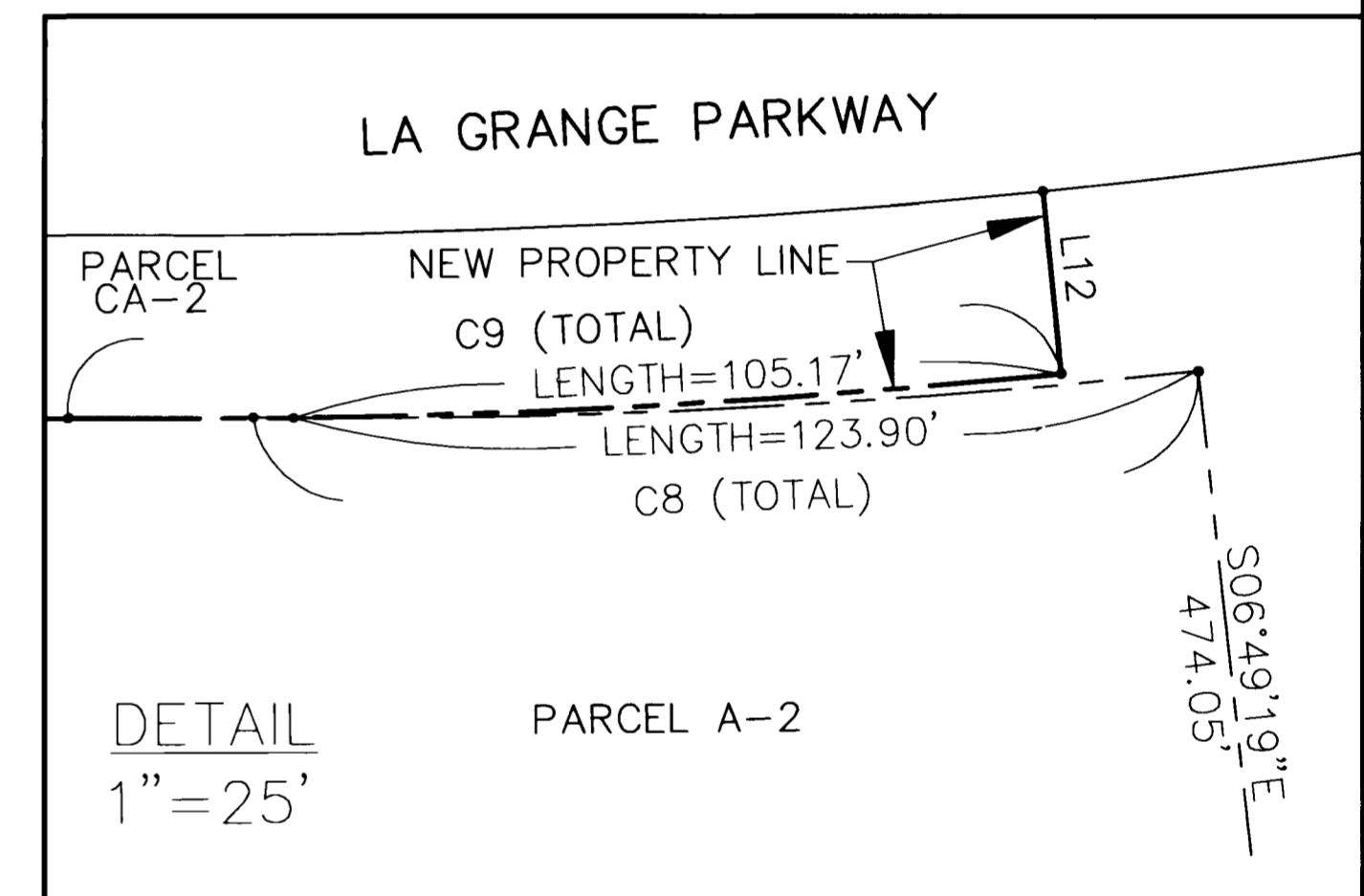
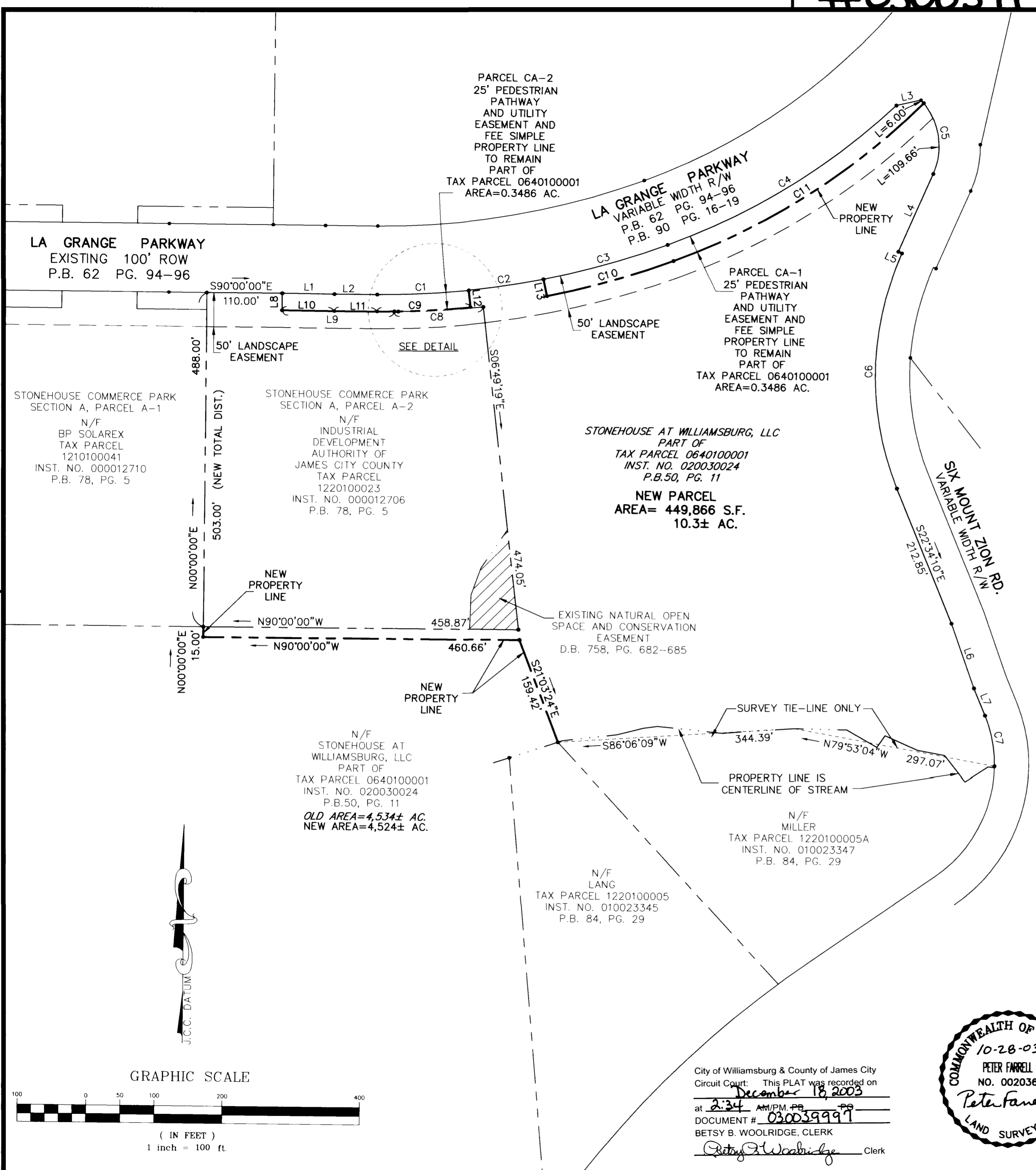


#030039997

LINE	LENGTH	BEARING
L1	76.02'	N89°43'25"W
L2	62.23'	N90°00'00"E
L4	124.52'	S23°28'13"W
L5	5.93'	S66°31'47"E
L6	100.13'	S19°42'25"E
L7	42.85'	S22°34'10"E
L8	25.00'	S00°00'00"W
L9	163.44'	N90°00'00"E
L10	75.96'	N89°43'25"W
L11	62.29'	N90°00'00"E
L12	25.00'	S06°21'17"E
L13	25.00'	S11°36'21"E

CURVE	RADIUS	LENGTH	TANGENT	CHORD	CHORD BEARING	DELTA
C1	1200.20'	133.12'	66.63'	133.05'	N86°49'21"E	6°21'17"
C2	1200.20'	110.00'	55.04'	109.96'	N81°01'11"E	5°15'04"
C5	100.00'	115.66'	65.27'	109.32'	N09°59'30"W	66°15'58"
C6	435.60'	353.10'	186.90'	343.52'	S00°39'10"W	46°26'41"
C7	190.36'	75.95'	38.49'	75.45'	N11°08'22"W	22°51'38"
C8	1087.00'	129.42'	64.79'	129.35'	N86°35'21"E	6°49'19"
C10	1225.20'	191.72'	96.05'	191.52'	N73°54'41"E	8°57'56"
C11	1007.00'	434.44'	220.65'	431.08'	N57°04'10"E	24°43'06"



SUBDIVISION
OF THE PROPERTY OF
STONEHOUSE AT WILLIAMSBURG, LLC
AT STONEHOUSE COMMERCE PARK
STONEHOUSE DISTRICT, JAMES CITY COUNTY, VIRGINIA
DATE: OCT. 24, 2003 SCALE: 1" = 100'
REVISED OCT. 28, 2003
SHEET 2 OF 2

LANDMARK
DESIGN GROUP
 Engineers • Planners • Surveyors
 Landscape Architects • Environmental Consultants

4029 Ironbound Road
 Suite 100
 Williamsburg, VA 23188
 Tel. (757) 253-2975
 Fax (757) 229-0049
 Email: lmdg@landmarkdgb.com

 5544 Greenwich Road
 Suite 200
 Virginia Beach, VA 23462
 Tel. (757) 473-2000
 Fax (757) 497-7933
 Email: lmdg@landmarkdgb.com



City of Williamsburg & County of James City
 Circuit Court: This PLAT was recorded on
 December 18, 2003
 at 2:34 AM/PM, P.B. _____
 DOCUMENT # 030039997
 BETSY B. WOOLRIDGE, CLERK
 Betsy B. Woolridge Clerk

