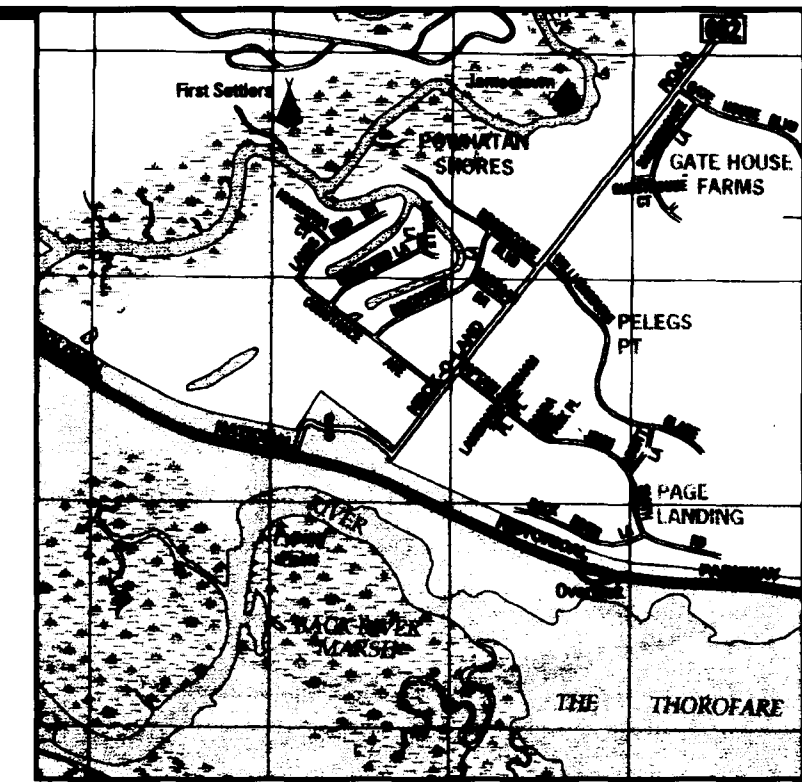
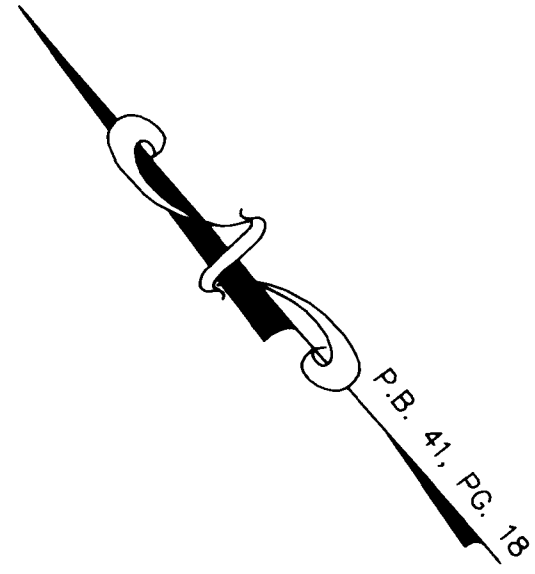
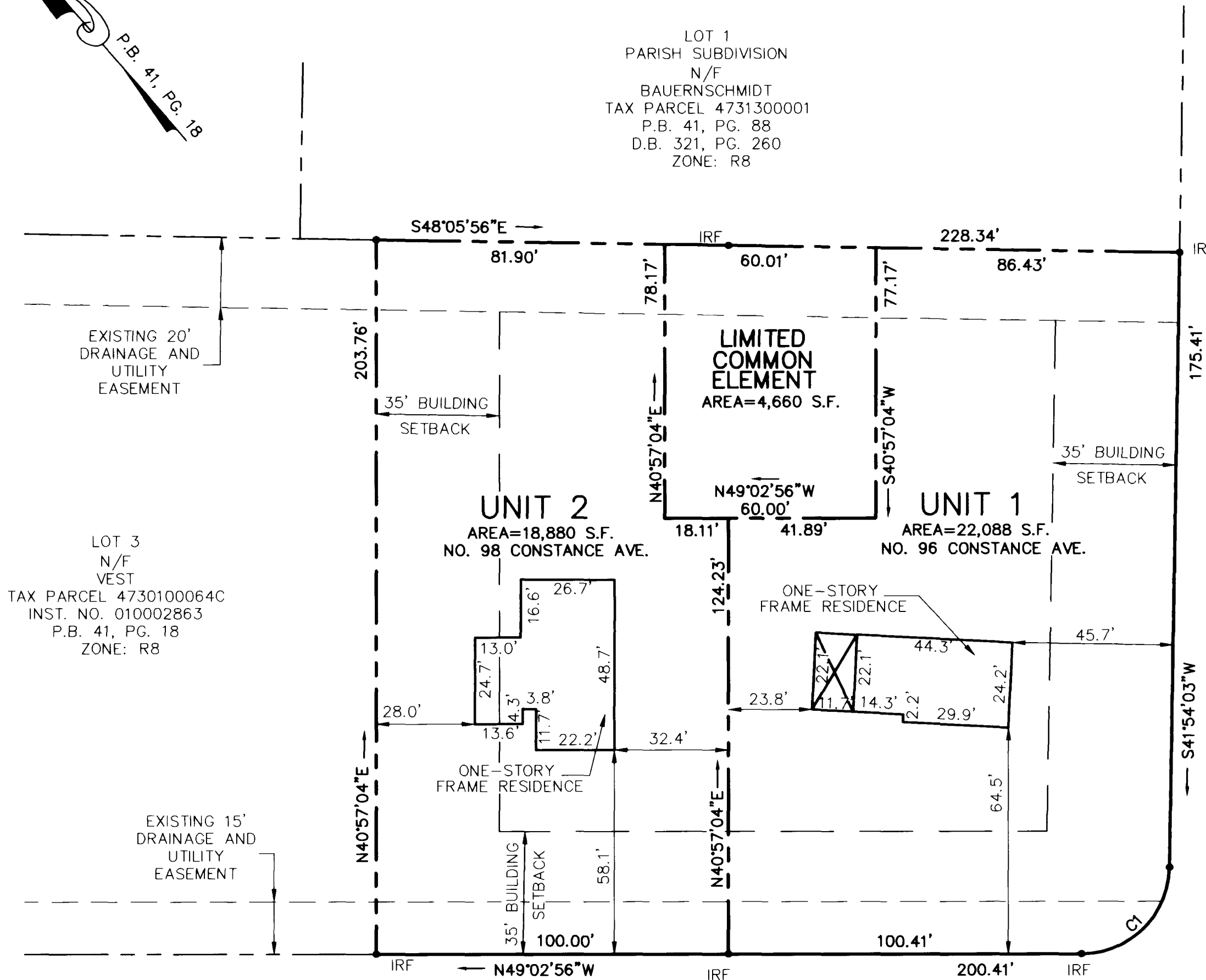


030038551

CURVE TABLE						
CURVE	RADIUS	LENGTH	TANGENT	CHORD	CHORD BEARING	DELTA
C1	25.00'	38.86'	24.59'	35.06'	S86°25'37"W	89°03'21"



VICINITY MAP
SCALE: 1"=2,000'±
PERMITTED USE NO. 20203118



AREA TABULATION

UNIT 1	22,088 S.F.
UNIT 2	18,880 S.F.
LIMITED COMMON ELEMENT	4,660 S.F.
TOTAL:	45,628 S.F.

PROPERTY IS ZONED R-8

NECK-O-LAND ROAD S.R. 682
50' R/W

CONSTANCE AVE
50' R/W

CONDOMINIUM PLAT
OF
CW III CONDOMINIUM

I CERTIFY THAT THIS PLAT IS ACCURATE AND COMPLIES WITH THE PROVISIONS OF SECTION 55-79.58(A) OF THE VIRGINIA CONDOMINIUM ACT.

Peter Farrell 11-25-03
PETER FARRELL, LS DATE



STATE OF VIRGINIA, COUNTY OF JAMES CITY

IN THE CLERK'S OFFICE OF THE CIRCUIT COURT THE PLAT SHOWN HEREON WAS PRESENTED AND ADMITTED TO RECORD

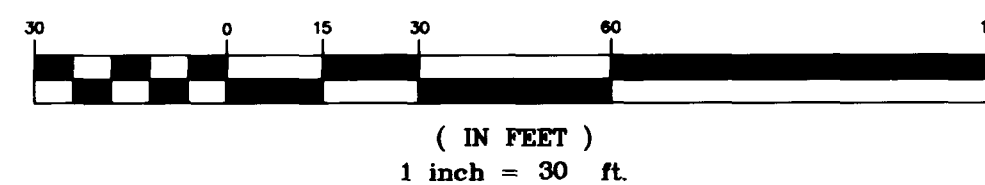
Dec 10 2003 AS THE LAW DIRECTS.
TESTEE: *City Clerk* CLERK

DOCUMENT NO. 030038551

JAMESTOWN DISTRICT, JAMES CITY COUNTY, VIRGINIA

SCALE: 1"=30' DATE: NOV. 25, 2003
SHEET 1 OF 1

GRAPHIC SCALE



LANDMARK
DESIGN GROUP

Engineers • Planners • Surveyors
Landscape Architects • Environmental Consultants

4029 Ironbound Road
Suite 100
Williamsburg, VA 23188
Tel. (757) 253-2975
Fax (757) 229-0049
Email: lmdg@landmarkdg.com

5544 Greenwich Road
Suite 200
Virginia Beach, VA 23462
Tel. (757) 473-2000
Fax (757) 497-7933
Email: lmdg@landmarkdg.com