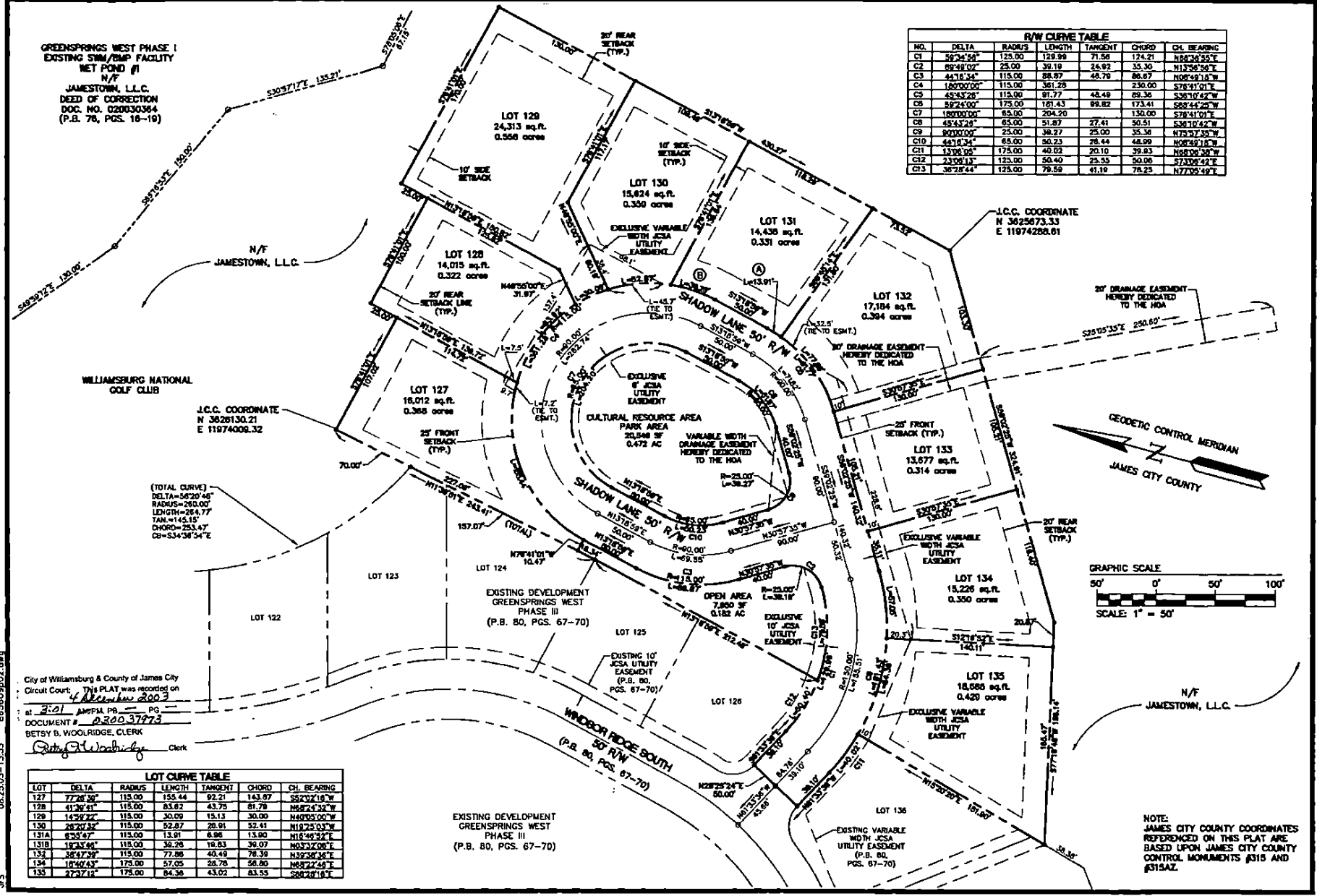


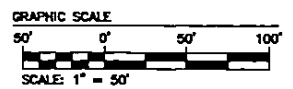
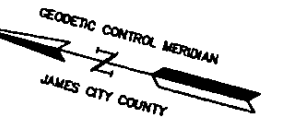
#030037973

GREENSPRINGS WEST PHASE I
EXISTING SWM/BMP FACILITY
NET POND #1
N/F
JAMESTOWN, L.L.C.
DEED OF CORRECTION
DOC. NO. 02003364
(P.B. 70, PGS. 18-19)



R/W CURVE TABLE						
NO.	DELTA	RADIUS	LENGTH	TANGENT	CHORD	CH. BEARING
C1	59°24'58"	125.00	129.99	71.96	124.21	N88°28'25"E
C2	69°49'07"	25.00	30.19	24.92	35.30	N112°36'36"E
C3	44°18'34"	115.00	88.67	48.79	86.87	N08°48'18"W
C4	100°02'00"	115.00	361.28		230.00	S72°41'01"E
C5	45°43'26"	115.00	91.77	48.49	89.36	S30°17'42"W
C6	59°24'00"	175.00	181.43	98.82	173.41	S68°44'20"W
C7	180°00'00"	65.00	204.20		130.00	S78°41'01"E
C8	45°43'28"	65.00	51.97	27.41	50.51	S31°10'42"W
C9	90°00'00"	25.00	30.97		25.00	N71°27'46"W
C10	44°18'34"	65.00	50.23	26.44	48.09	N04°58'16"W
C11	130°05'05"	175.00	40.02	20.10	39.83	N68°30'30"W
C12	23°08'13"	125.00	50.40	23.55	50.06	S73°08'42"E
C13	36°28'44"	125.00	78.59	41.19	78.23	N77°09'49"E

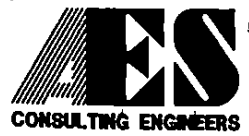
(TOTAL CURVE)
DELTA=56°20'46"
RADIUS=260.00'
LENGTH=264.77'
TAN=145.15'
CHORD=253.47'
CB=S34°58'34"E



City of Williamsburg & County of James City
Circuit Court: This PLAT is recorded on
4 December 2003
at 3:21 AM/PM PG. _____
DOCUMENT # 030037973
BETSY B. WOOLRIDGE, CLERK
Betsy B. Woolridge Clerk

LOT CURVE TABLE						
LOT	DELTA	RADIUS	LENGTH	TANGENT	CHORD	CH. BEARING
127	77°06'30"	115.00	155.44	92.71	143.07	S52°01'10"W
128	41°36'41"	115.00	83.82	43.75	81.79	N82°24'32"W
129	145°27'22"	115.00	30.00	15.13	30.00	N40°05'00"W
130	28°27'32"	115.00	52.87	26.91	52.41	N18°24'03"W
131A	65°47'	115.00	13.91	6.96	13.80	N18°46'52"E
131B	183°44'	115.00	36.28	19.83	39.07	N83°24'08"E
132	36°23'46"	115.00	77.86	40.49	78.39	N32°38'41"E
134	18°42'43"	175.00	57.05	28.76	56.80	N82°27'44"E
135	27°27'12"	175.00	84.36	43.02	83.55	S68°28'18"E

05-25-03-13-33 858609d02.dwg JFS



5248 Olde Towne Road, Suite 1
Williamsburg, Virginia 23188
(757) 253-0040
Fax (757) 220-8994

PLAT OF SUBDIVISION
GREENSPRINGS WEST
PHASE IIIC
LOTS 127-135
BEING THE PROPERTY OF JAMESTOWN, L.L.C.
BERKELEY DISTRICT JAMES CITY COUNTY VIRGINIA



NO.	DATE	REVISION / COMMENT / NOTE	BY
2	8/25/03	REVISED PER COUNTY COMMENTS	JFS
1	7/7/03	REVISED LOT DEPTHS 30' PER OWNER'S REQUEST	JFS

Designed BY OTHERS	Drawn BY JFS
Scale 1"=50'	Date 5/21/03
Project No. 8656-9	
Drawing No. 2 OF 2	