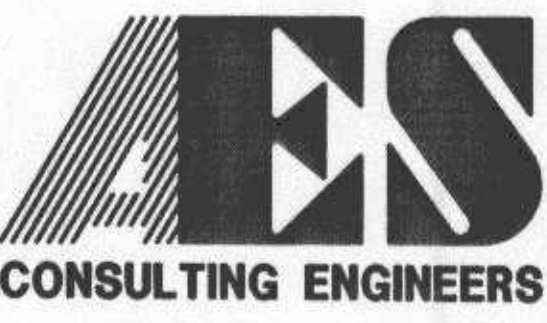
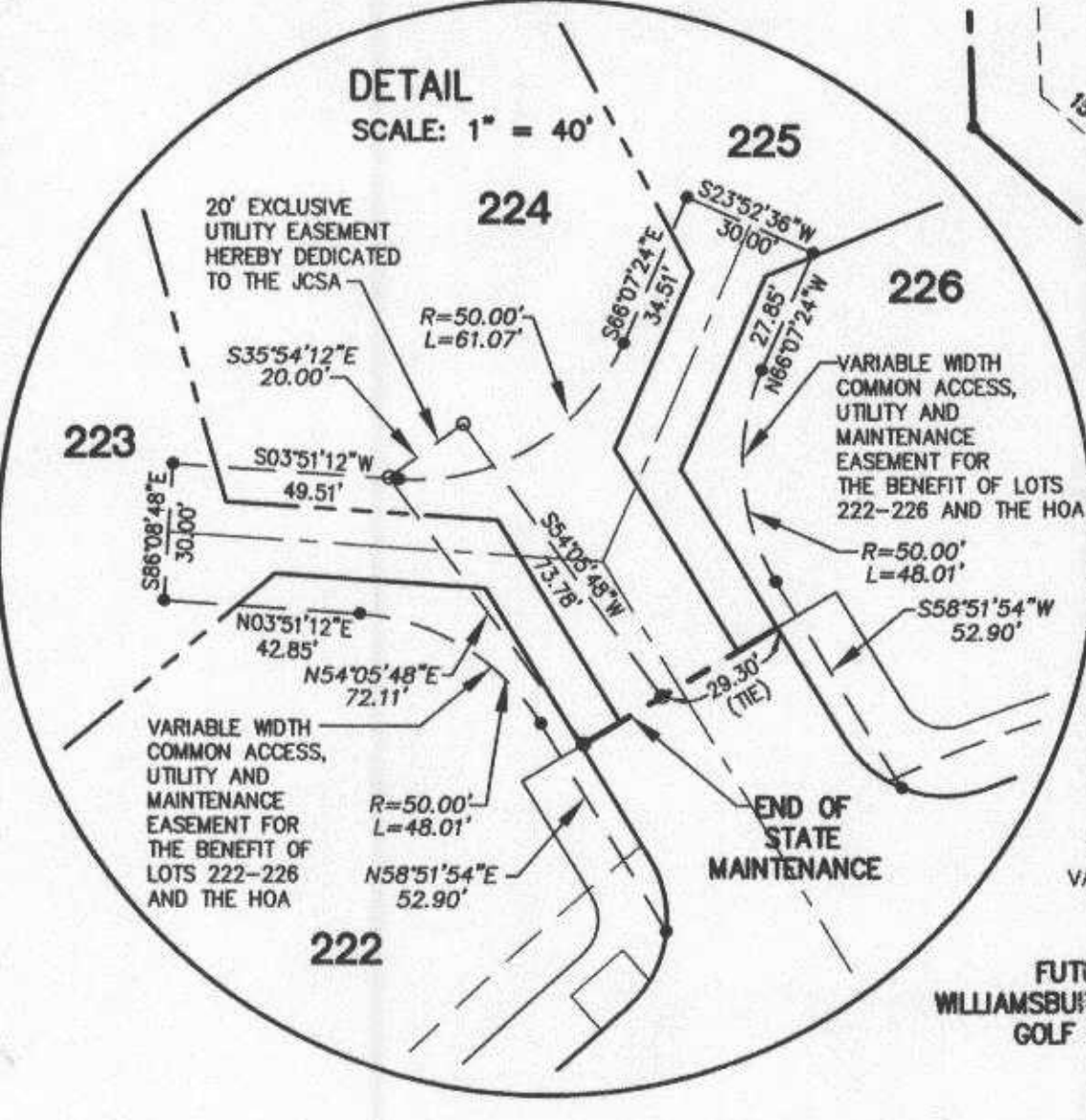


LINE TABLE

LINE	LENGTH	BEARING
L1	10.00	N31°08'06"W
L2	30.00	N31°08'06"W
L3	10.00	N31°08'06"W

CURVE TABLE

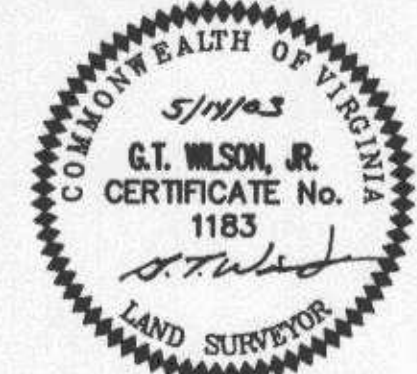
NO.	DELTA	RADIUS	LENGTH	TANGENT	CHORD	CH. BEARING
C1	7°30'45"	275.00	36.06	18.05	36.03	N17°47'05"W
C2	80°24'21"	25.00	35.08	21.13	32.27	N18°39'43"E
C3	80°24'21"	25.00	35.08	21.13	32.27	N80°55'55"W
C4	7°13'47"	744.12	93.89	47.01	93.83	N44°20'38"W



5248 Olde Towne Road, Suite 1
Williamsburg, Virginia 23188
(757) 253-0040
Fax (757) 220-8994

**PLAT OF SUBDIVISION
GREENSPRINGS WEST
PHASE IV-C
LOTS 222-226
BEING THE PROPERTY OF JAMESTOWN, L.L.C.**

BERKELEY DISTRICT JAMES CITY COUNTY VIRGINIA



No.	DATE	REVISION / COMMENT / NOTE	BY

Designed BY OTHERS	Drawn JFS
Scale 1"=40'	Date 5/14/03
Project No. 8656-10	Drawing No. 2 OF 2

05.16.03-10.36 865610p2.DWG

out of (36-3)(01-0-0022)
(36-3)(02-0-0100)
12/3/03 mjk/ada
mapped 12-18-03 psc