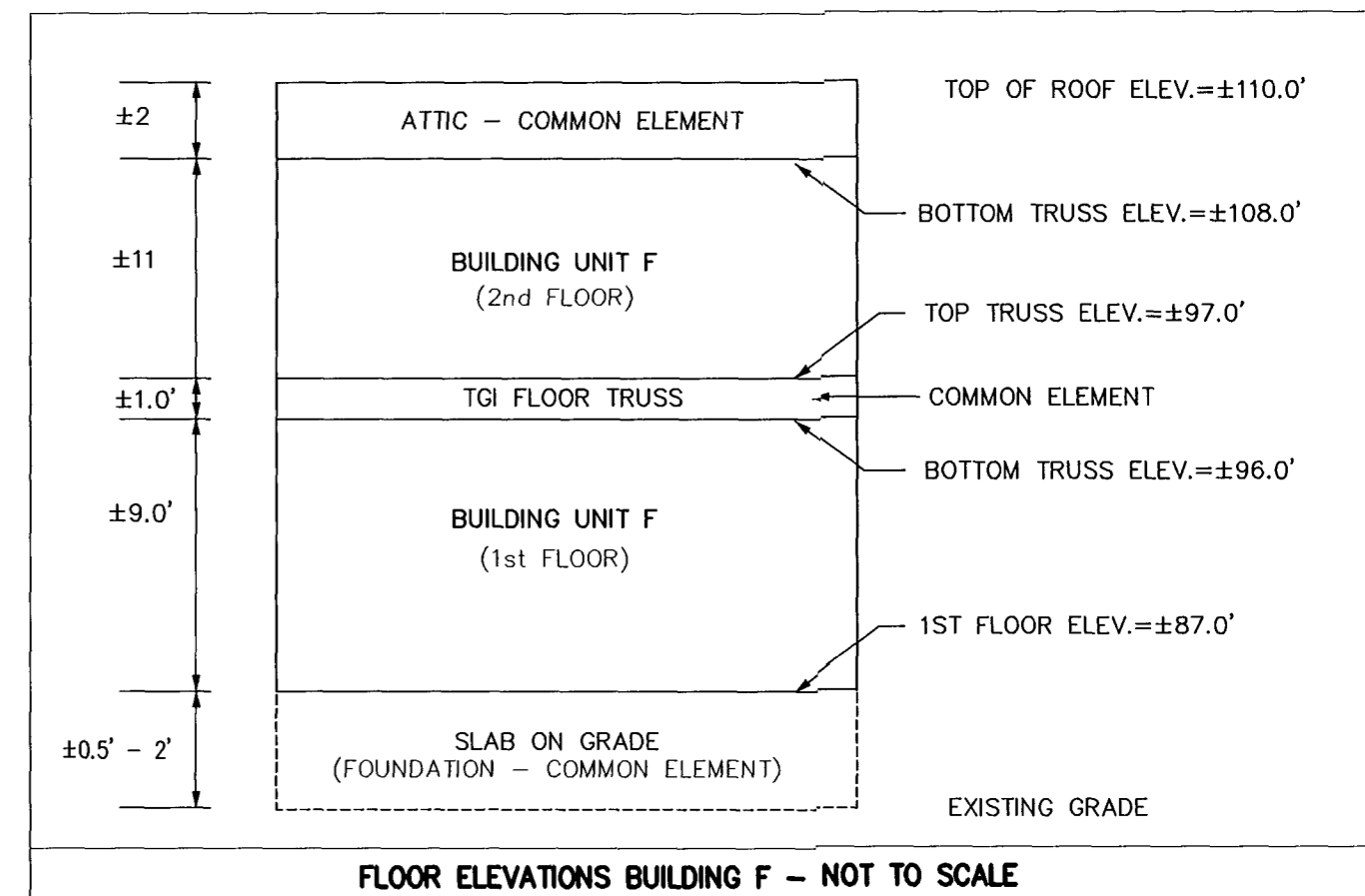
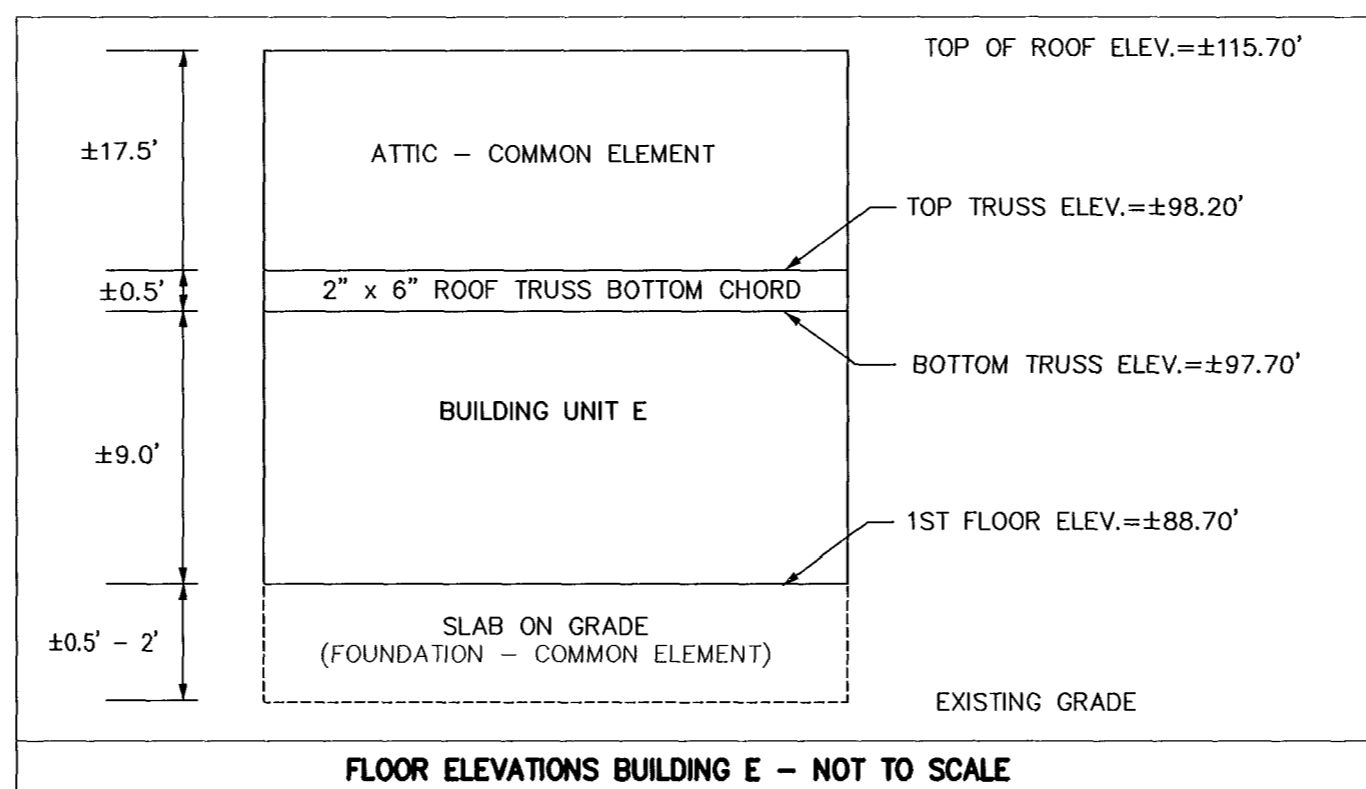
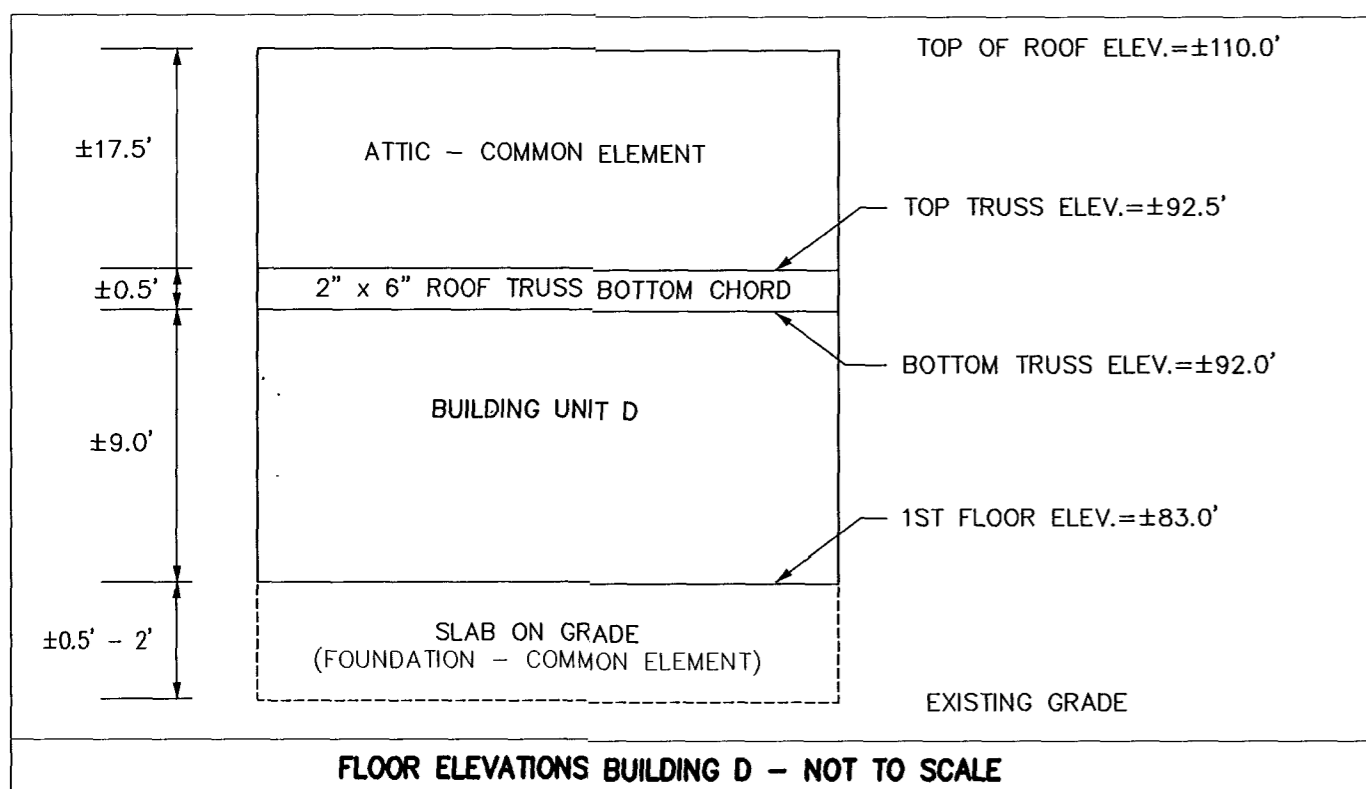
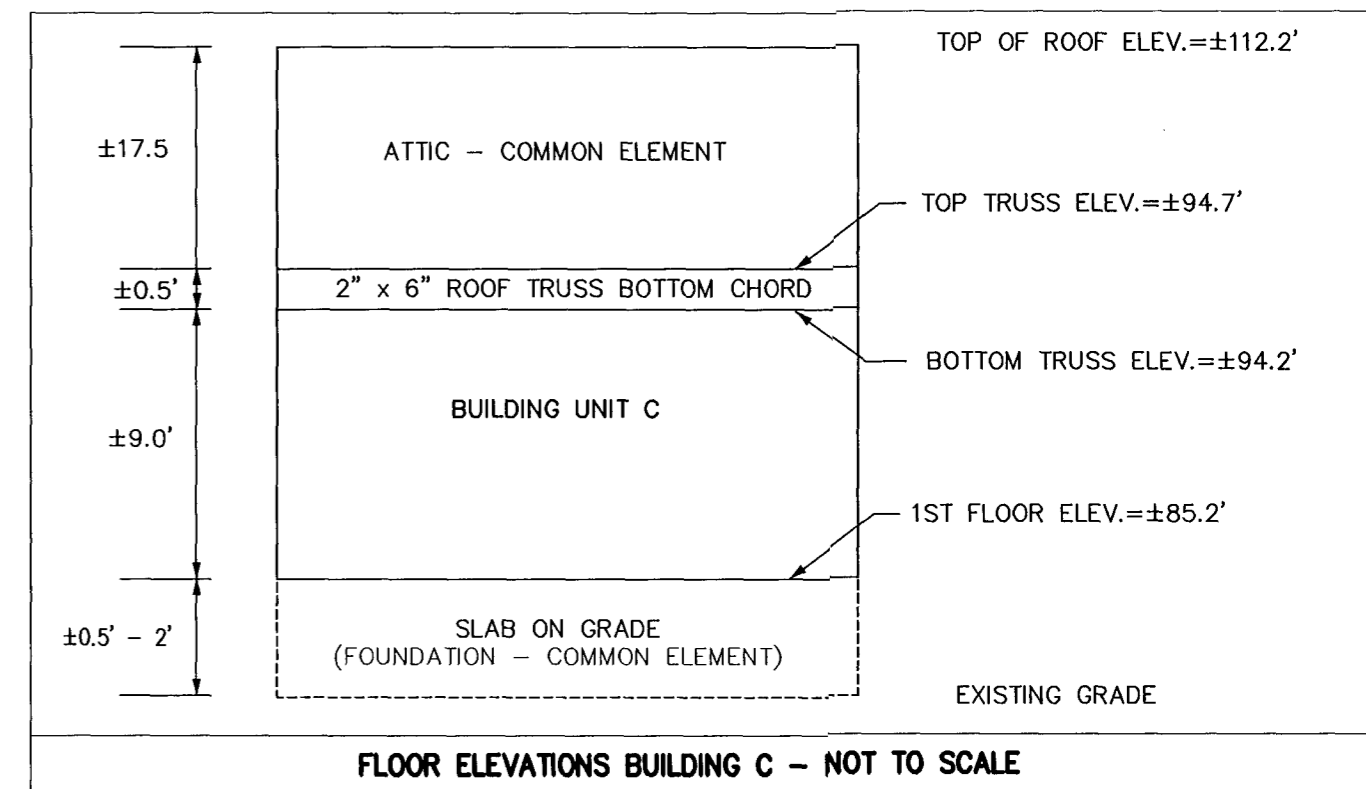
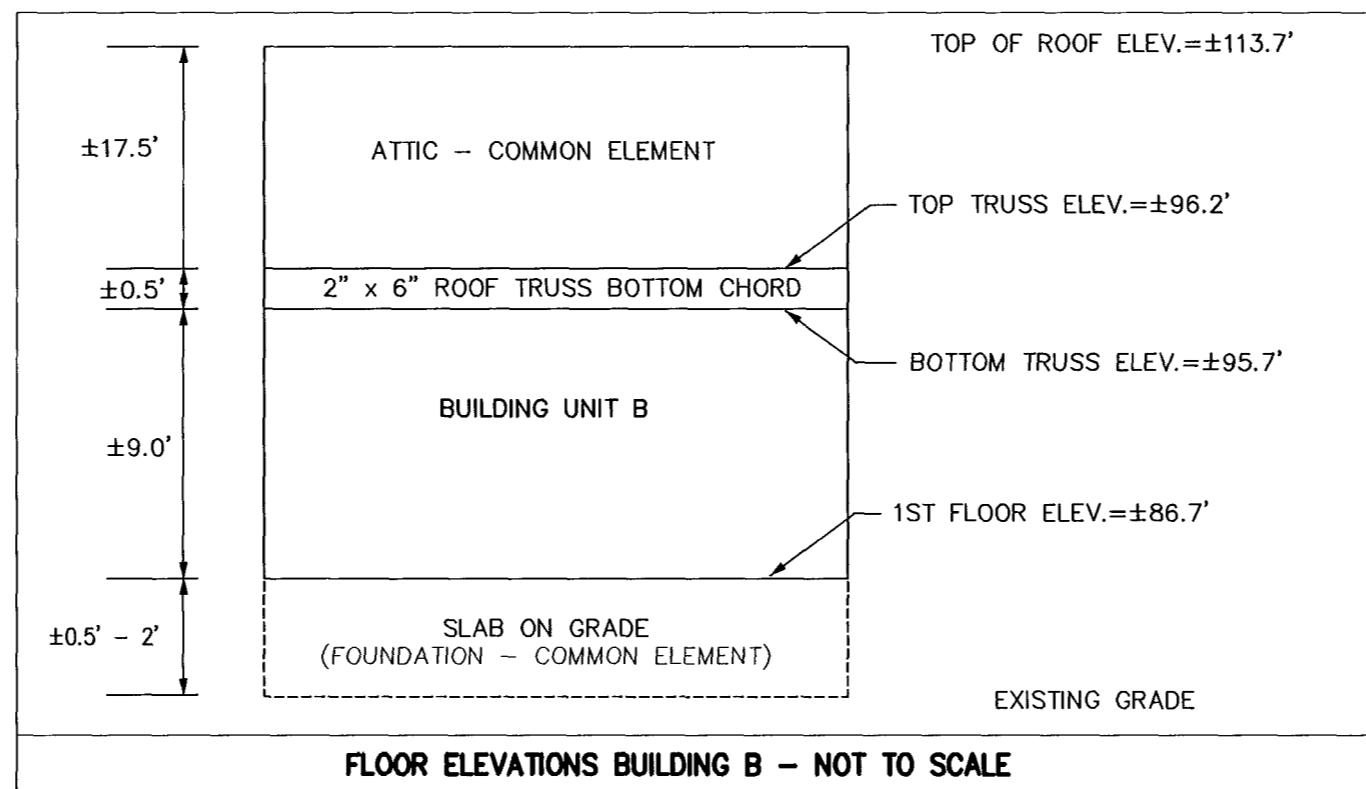
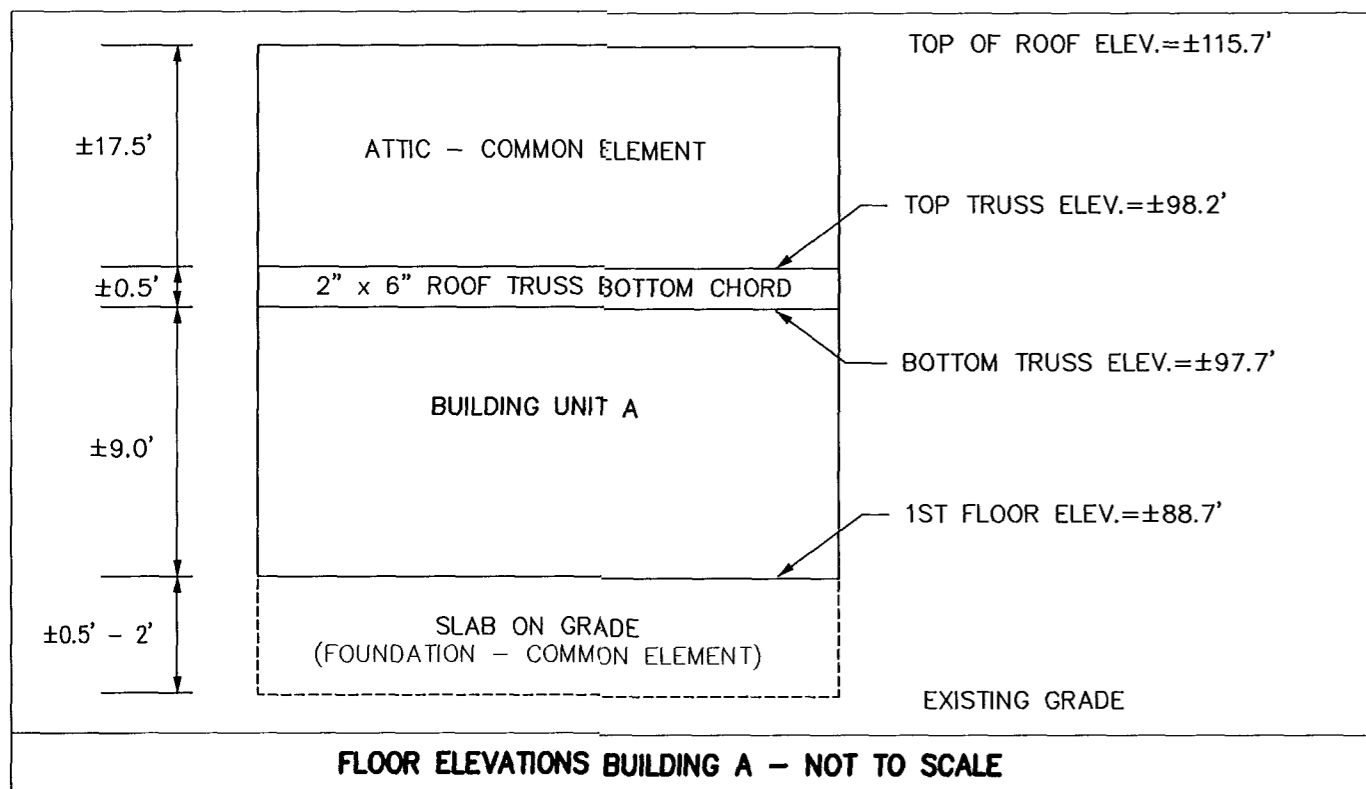


#030036742



SHEET 2 OF 2

LandTech Resources, Inc.

Surveying • Mapping • GPS
5810-F Mooretown Road, Williamsburg, Virginia 23188
Telephone: 757-565-1677 Fax: 757-565-0782
Web: landtechresources.com

PLAT SHOWING
McLAWS PARK PHASE 2 - McLAWS CENTER CONDOMINIUMS

Roberts District, James City County, Virginia
PROJECT #03-616 DATE: 11-17-2003

SURVEYOR'S CERTIFICATE

I CERTIFY THAT THIS PLAT IS ACCURATE AND COMPLIES WITH THE PROVISIONS OF SECTION 55-79.58(A) AND (B) OF THE CODE OF VIRGINIA 1950 AS AMENDED AND THAT ALL UNITS DEPICTED HEREON HAVE BEEN SUBSTANTIALLY COMPLETED.

Matthew H. Connolly
STATE CERTIFIED LAND SURVEYOR

11-17-2003
DATE

City of Williamsburg & County of James City
Circuit Court: This PLAT was recorded on
21 November 2003
at 11:15 AM/PM, PG -
DOCUMENT # 030036742
BETSY B. WOOLRIDGE, CLERK

Betsy B. Woolridge Clerk

