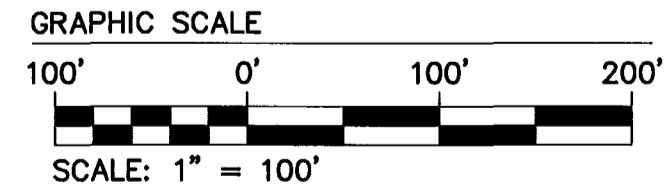
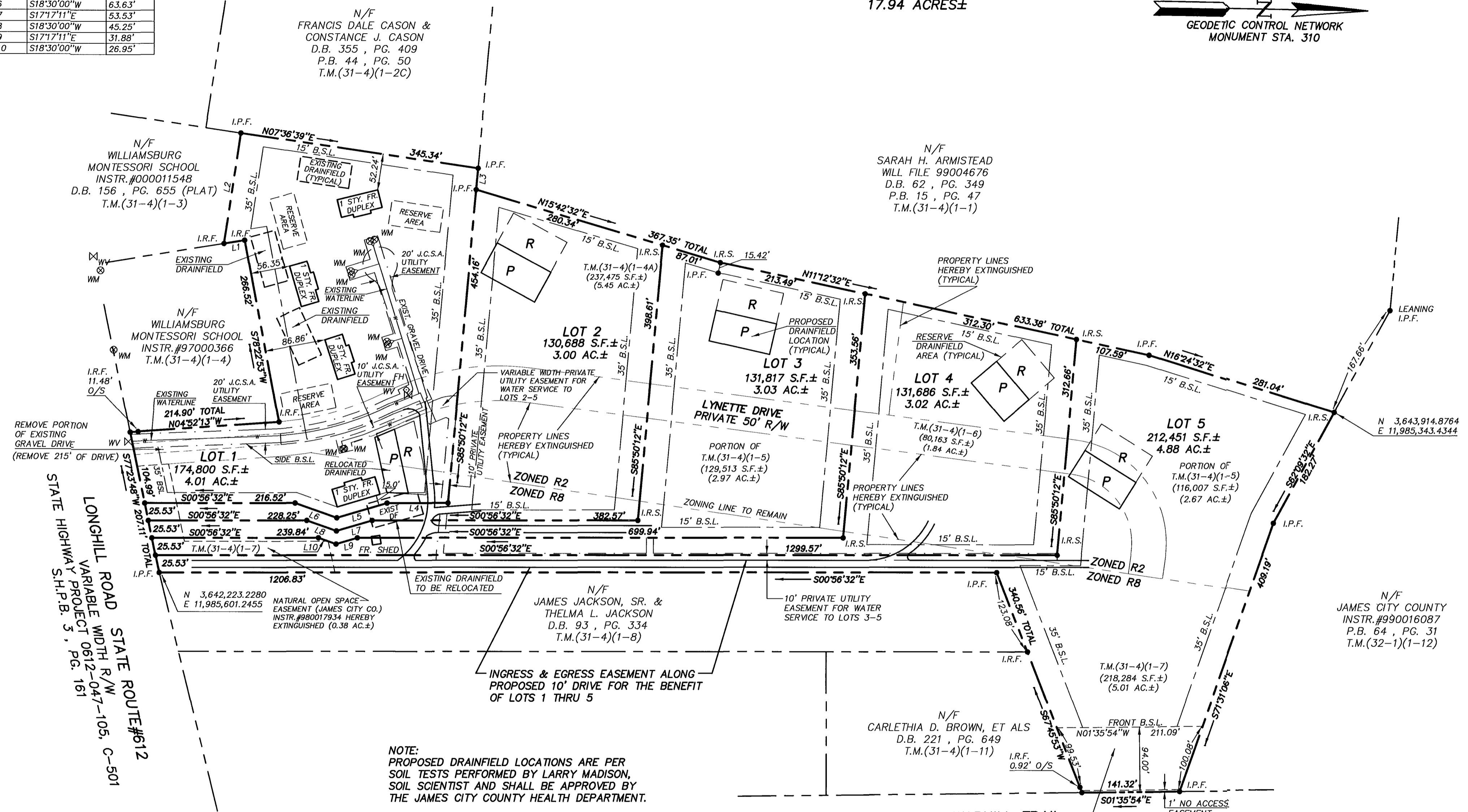
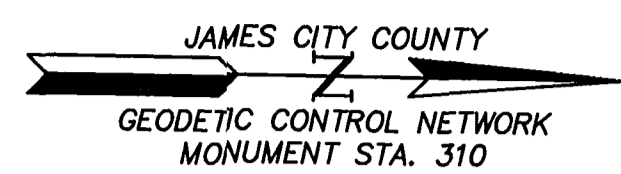


#030036705

LINE TABLE

NUMBER	BEARING	DISTANCE
L1	S10°02'35"E	30.06'
L2	N82°23'22"W	161.78'
L3	S85°50'12"E	31.09'
L4	S00°56'32"E	87.76'
L5	S17°17'11"E	75.26'
L6	S18°30'00"W	63.63'
L7	S17°17'11"E	53.53'
L8	S18°30'00"W	45.25'
L9	S17°17'11"E	31.88'
L10	S18°30'00"W	26.95'

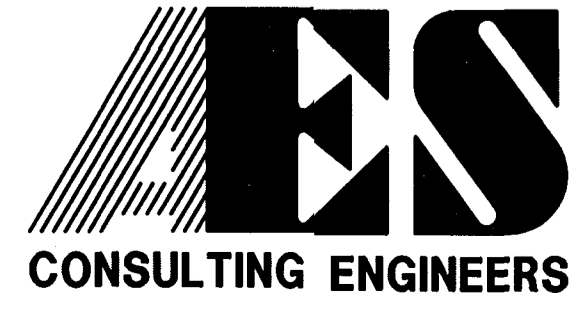
TOTAL AREA=
781,442 S.F.±
17.94 ACRES±



NOTE:
PROPOSED DRAINFIELD LOCATIONS ARE PER
SOIL TESTS PERFORMED BY LARRY MADISON,
SOIL SCIENTIST AND SHALL BE APPROVED BY
THE JAMES CITY COUNTY HEALTH DEPARTMENT.

City of Williamsburg & County of James City
Circuit Court: This PLAT was recorded on
21 November 2003
at 10:56 AM/PM, PB PG
DOCUMENT # 030036705
BETSY B. WOOLDRIDGE, CLERK
Betsy Woolridge Clerk

17.06.03-10:37 8398SUBD.dwg



5248 Olde Towne Road, Suite 1
Williamsburg, Virginia 23188
(757) 253-0040
Fax (757) 220-8994

PLAT OF SUBDIVISION
BEING THE PROPERTY OWNED BY
SHELDON PROPERTIES, L.L.C.

POWhatan DISTRICT JAMES CITY COUNTY VIRGINIA



No.	DATE	REVISION / COMMENT / NOTE	BY
2	4/29/03	RELOCATED DRAINFIELD LOCATIONS PER LARRY MADISON	JKR
1	2/12/03	PER JAMES CITY COMMENTS	JKR

Designed AES	Drawn JKR
Scale 1"=100'	Date 11/5/2002
Project No. 8398-1	
Drawing No. 2 OF 2	