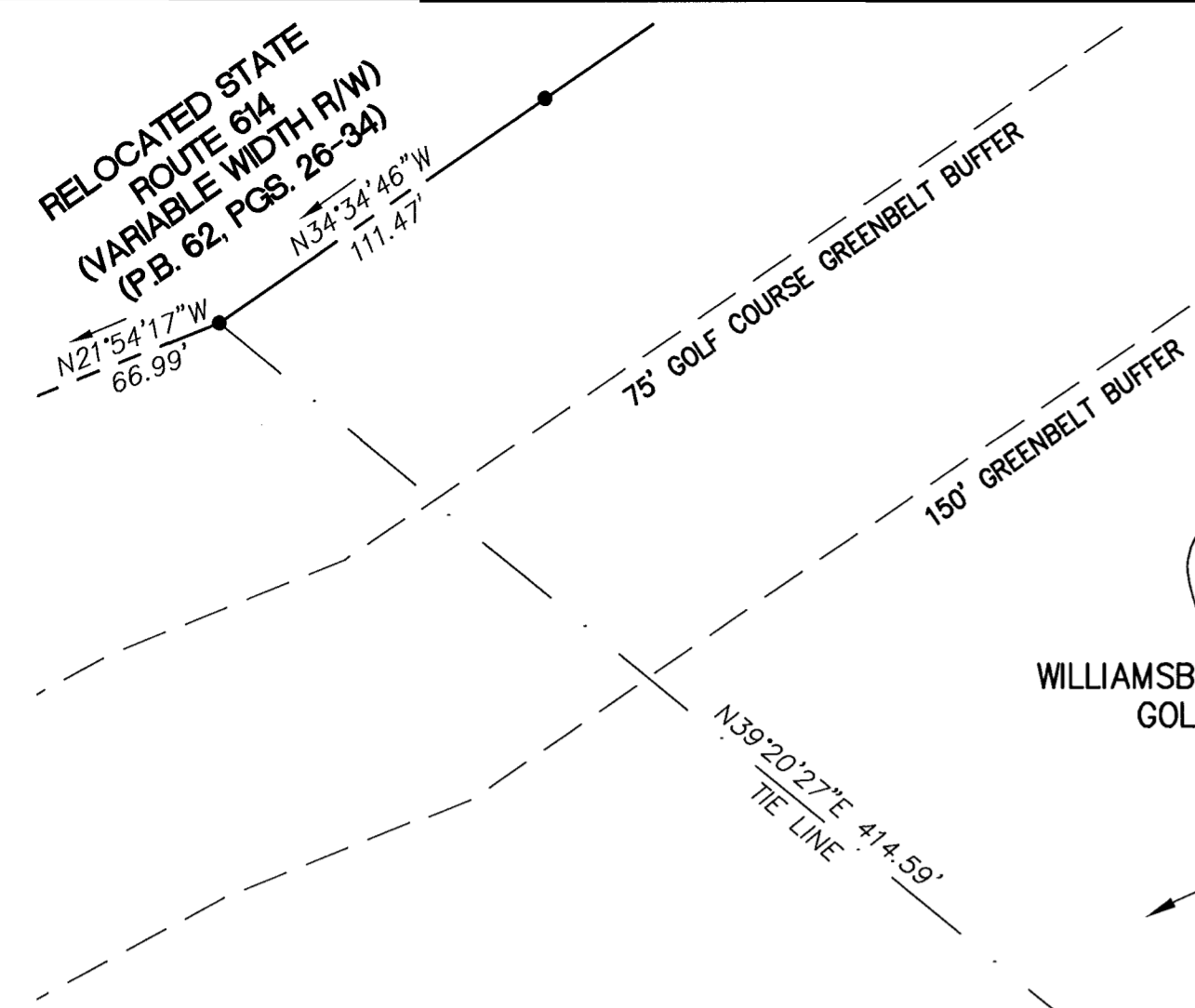


#030034821



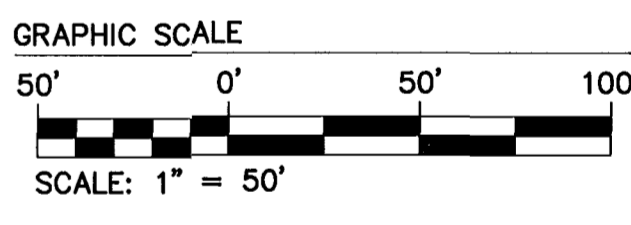
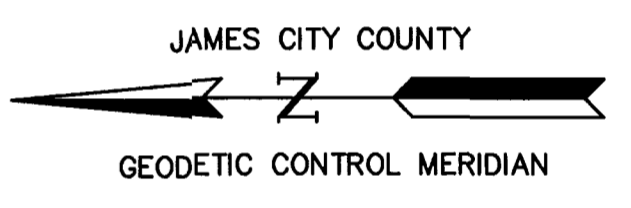
LOT CURVE TABLE																					
LOT	DELTA	RADIUS	LENGTH	TANGENT	CHORD	CH. BEARING	LOT	DELTA	RADIUS	LENGTH	TANGENT	CHORD	CH. BEARING	LOT	DELTA	RADIUS	LENGTH	TANGENT	CHORD	CH. BEARING	
202 A	20°04'03"	275.00	96.32	48.66	95.83	N03°59'40"W	208 B	14°12'28"	400.00	99.19	49.85	98.93	S07°08'40"E	215 A	28°30'11"	165.00	82.08	41.91	81.24	N19°17'21"W	
202 B	29°56'16"	250.00	130.63	66.84	129.15	S12°56'57"E	208 C	11°14'30"	525.00	103.01	51.67	102.84	N10°03'11"W	215 B	24°52'07"	275.00	119.36	60.64	118.43	S15°43'57"E	
203 A	8°14'53"	250.00	35.99	18.03	35.96	S06°08'36"W	209 A	11°03'58"	525.00	101.40	50.86	101.24	N21°12'25"W	216 A	7°05'55"	685.00	84.87	42.49	84.81	N36°46'33"W	
203 B	19°59'49"	150.00	52.35	26.44	52.09	S00°16'08"W	209 B	14°32'32"	400.00	101.52	51.04	101.25	S21°31'10"E	216 B	6°47'04"	165.00	19.54	9.78	19.53	N36°55'58"W	
203 C	21°27'50"	275.00	103.02	52.12	102.42	N00°12'40"E	210 A	11°19'12"	525.00	103.73	52.03	103.56	N32°24'00"W	216 C	12°09'30"	275.00	58.36	29.29	58.25	S34°14'45"E	
203 D	4°54'14"	275.00	23.54	11.78	23.53	N08°29'28"E	210 B	3°08'04"	450.00	24.62	12.31	24.62	S38°45'28"E	216 D	4°33'12"	575.00	45.69	22.86	45.68	S38°02'54"E	
204 A	33°10'51"	150.00	86.87	44.69	85.66	S26°19'11"E	210 C	11°32'04"	400.00	80.53	40.40	80.39	S34°33'28"E	217 A	8°28'16"	685.00	101.28	50.73	101.18	N28°59'27"W	
204 B	26°12'31"	275.00	125.79	64.02	124.70	N23°37'30"W	211 A	2°15'54"	525.00	20.75	10.38	20.75	N39°11'33"W	217 B	10°08'48"	575.00	101.83	51.05	101.70	S30°41'54"E	
204 C	2°46'19"	450.00	21.77	10.89	21.77	S41°31'27"E	211 B	14°47'17"	325.00	83.88	42.18	83.65	N32°55'51"W	218 A	2°40'15"	685.00	31.93	15.97	31.93	N23°25'12"W	
205 A	13°28'11"	325.00	76.40	38.38	76.23	S36°10'31"E	211 C	13°07'58"	450.00	103.14	51.80	102.92	S30°37'27"E	218 B	9°58'32"	575.00	100.11	50.18	99.99	S20°38'14"E	
205 B	6°10'51"	275.00	29.67	14.85	29.65	S39°49'11"E	212 A	17°57'20"	325.00	101.85	51.35	101.43	N16°33'33"W	219 A	13°34'33"	450.00	106.62	53.56	106.37	N35°34'26"W	
205 C	13°16'21"	450.00	104.24	52.35	104.01	N33°30'07"W	212 B	12°55'46"	450.00	101.55	50.99	101.33	S17°35'35"E	219 B	14°07'27"	325.00	80.12	40.26	79.91	S35°50'54"E	
206 A	17°55'08"	325.00	101.64	51.24	101.23	N20°28'52"W	213 A	6°53'19"	325.00	39.07	19.56	39.05	N04°08'14"W	219 C	8°15'18"	275.00	39.62	19.84	39.59	S38°46'58"E	
206 B	12°54'57"	450.00	101.44	50.94	101.23	S20°24'29"E	213 B	7°58'56"	475.00	66.17	33.14	66.12	N04°41'02"W	220 A	18°56'17"	450.00	148.74	75.05	148.06	N19°19'01"W	
207 A	13°15'06"	450.00	104.08	52.27	103.85	S07°19'27"E	213 C	3°45'58"	350.00	23.01	11.51	23.00	S02°34'33"E	220 B	18°11'29"	325.00	103.19	52.03	102.75	S19°41'26"E	
207 B	11°28'52"	325.00	65.12	32.67	65.02	N05°46'52"W	213 D	10°26'08"	450.00	81.96	41.09	81.85	S05°54'38"E	221 A	16°28'45"	450.00	129.43	65.16	128.98	N01°36'31"W	
207 C	4°23'30"	525.00	40.24	20.13	40.23	N02°14'11"W	214 A	12°17'18"	475.00	101.87	51.13	101.68	N14°49'09"W	221 B	21°32'16"	325.00	122.17	61.81	121.45	S00°10'27"W	
208 A	0°39'28"	450.00	5.17	2.58	5.17	S00°22'10"E	214 B	16°46'09"	350.00	102.44	51.59	102.07	S12°50'37"E								

WILLIAMSBURG NATIONAL GOLF CLUB

J.C.C. COORDINATE  
N 3624997.1593  
E 11975398.7856

FUTURE DEVELOPMENT  
GREENSPRINGS WEST  
PHASE IV-B

NOTE:  
THIS RIGHT-OF-WAY IS PLATTED WITH THE INTENT OF BEING EXTENDED AND CONTINUED IN ORDER TO PROVIDE INGRESS AND EGRESS TO AND FROM FUTURE SUBDIVISIONS OR ADJACENT PROPERTY.



NOTE:  
THIS RIGHT-OF-WAY IS PLATTED WITH THE INTENT OF BEING EXTENDED AND CONTINUED IN ORDER TO PROVIDE INGRESS AND EGRESS TO AND FROM FUTURE SUBDIVISIONS OR ADJACENT PROPERTY.

CURVE TABLE													
NO.	DELTA	RADIUS	LENGTH	TANGENT	CHORD	CH. BEARING	NO.	DELTA	RADIUS	LENGTH	TANGENT	CHORD	CH. BEARING
C1	24°58'17"	225.00	98.06	49.82	97.29	N01°32'33"W	C17	18°14'26"	685.00	218.07	109.97	217.15	N31°12'17"W
C2	38°11'08"	250.00	166.62	86.53	163.55	S08°49'31"E	C18	9°36'10"	575.00	96.37	48.30	96.26	N10°50'53"W
C3	53°10'40"	150.00	139.22	75.08	134.28	S16°19'17"E	C19	85°13'11"	25.00	37.18	23.00	33.85	N48°39'24"W
C4	42°52'11"	450.00	336.70	176.67	328.90	S21°28'32"E	C20	97°18'42"	25.00	42.46	28.41	37.54	N40°04'40"E
C5	40°17'04"	400.00	281.24	146.71	275.48	S20°10'58"E	C21	26°04'38"	275.00	125.16	63.68	124.08	N21°37'00"W
C6	39°37'56"	450.00	311.27	162.15	305.10	S20°30'32"E	C22	48°59'35"	450.00	384.79	205.04	373.17	N17°51'56"W
C7	20°32'07"	350.00	125.45	63.40	124.77	S10°57'38"E	C23	24°58'17"	275.00	119.86	60.89	118.91	S01°32'33"E
C8	5°23'04"	475.00	44.64	22.34	44.62	S23°39'20"E	C24	53°51'12"	275.00	258.49	139.68	249.07	S15°59'01"E
C9	2°43'42"	525.00	25.00	12.50	25.00	N24°41'47"W	C25	42°52'11"	325.00	243.16	127.59	237.54	S21°28'32"E
C10	84°32'18"	25.00	36.89	22.72	33.63	N65°36'05"W	C26	40°17'04"	525.00	369.13	192.56	361.57	S20°10'58"E
C11	6°29'21"	275.00	31.15	15.59	31.13	S75°22'26"W	C27	39°37'56"	325.00	224.80	117.11	220.35	S20°30'32"E
C12	6°21'59"	225.00	25.00	12.51	24.99	N75°26'08"E	C28	25°39'18"	475.00	212.68	108.16	210.92	S13°31'13"E
C13	85°09'09"	25.00	37.15	22.97	33.83	N29°40'34"E	C29	39°37'56"	275.00	190.22	99.09	186.45	N20°30'32"W
C14	12°12'27"	525.00	111.86	56.14	111.65	N06°47'48"W	C30	34°16'42"	575.00	344.00	177.32	338.90	N23°11'09"W
C15	2°36'19"	275.00	12.50	6.25	12.50	N01°59'44"W	C31	34°19'56"	275.00	164.78	84.95	162.33	N25°44'39"W
C16	35°17'15"	165.00	101.62	52.48	100.02	N22°40'53"W	C32	53°51'12"	325.00	305.48	165.07	294.35	N15°59'01"W

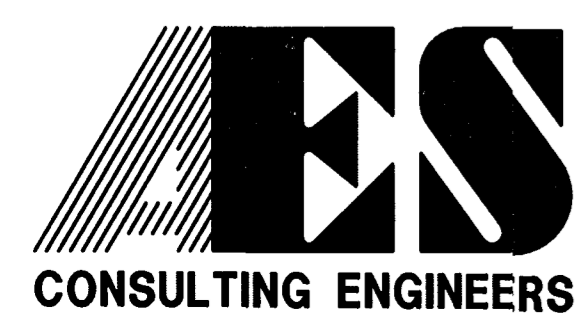
N/F JAMESTOWN, LLC  
REMAINDER PARCEL S-1A  
PARCEL ID#(3630100022)  
DOC#(990005466)  
DOC#(990005545)  
P.B. 72, PGS. 31-37

J.C.C. COORDINATE  
N 3625386.2237  
E 11975283.5792

N/F JAMESTOWN, LLC  
REMAINDER PARCEL S-1A  
PARCEL ID#(3630100022)  
DOC#(990005466)  
DOC#(990005545)  
P.B. 72, PGS. 31-37

FUTURE DEVELOPMENT  
GREENSPRINGS WEST  
PHASE IV-B

THIS SHEET ADDRESSES LOTS 208-218



5248 Olde Towne Road, Suite 1  
Williamsburg, Virginia 23188  
(757) 253-0040  
Fax (757) 220-8994

PLAT OF SUBDIVISION  
GREENSPRINGS WEST  
PHASE IV-A  
LOTS 202-221  
BEING THE PROPERTY OF JAMESTOWN, L.L.C.  
BERKELEY DISTRICT JAMES CITY COUNTY VIRGINIA



City of Williamsburg & County of James City		Circuit Court: This PLAT was recorded on	
		November 7, 2003	
		at 2:15 AM/PM, PG. 1	
		DOCUMENT # 030034821	
		BETSY B. WOOLRIDGE, CLERK	
		Betsy B. Woolridge Clerk	
No.	DATE	REVISION / COMMENT / NOTE	BY
1	6/30/03	REVISED PER COUNTY COMMENTS	JFS
Designed BY OTHERS		Drawn JFS	
Scale 1"=50'		Date 1/20/03	
Project No. 8656-6B		Drawing No. 3 OF 3	