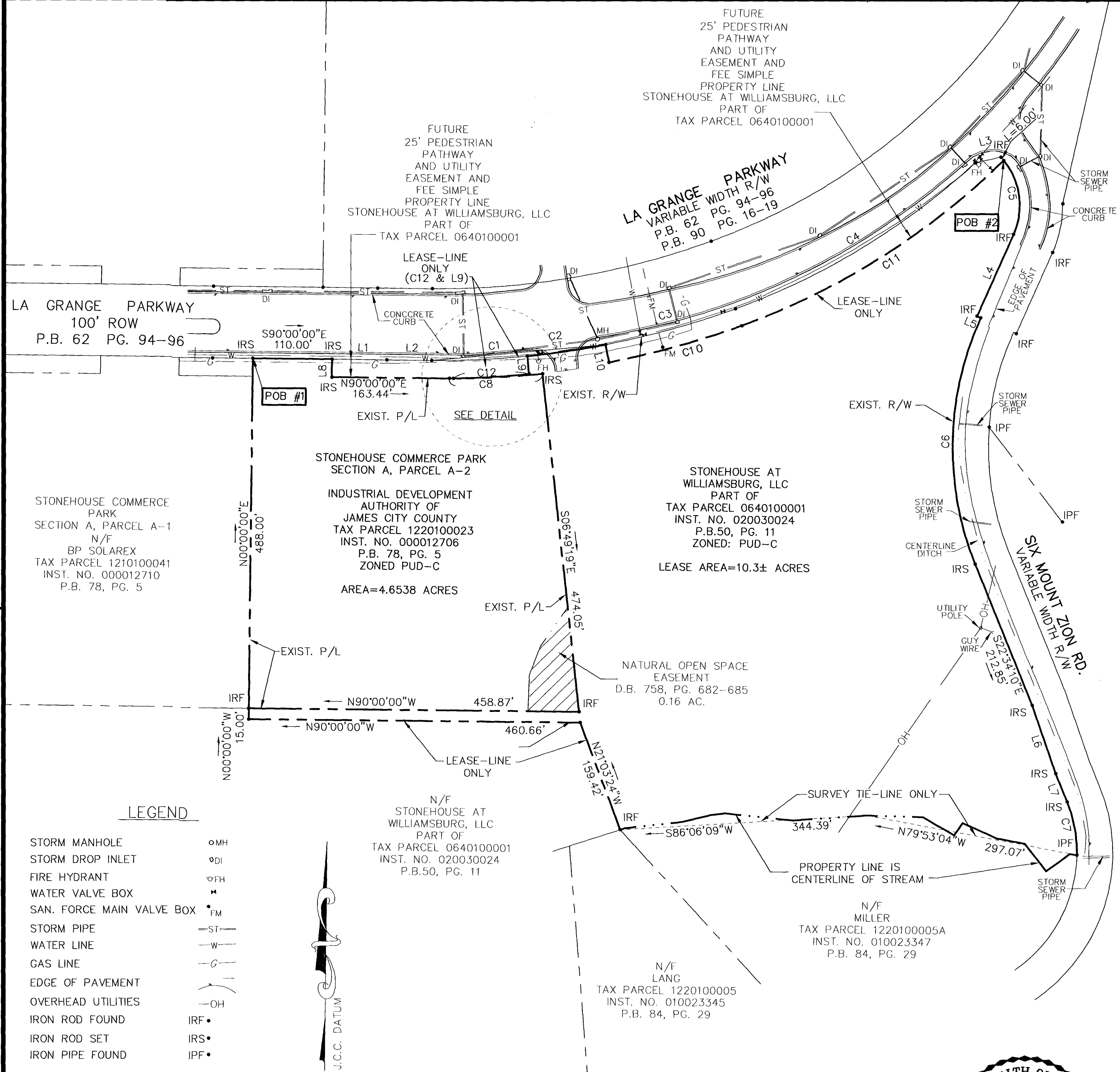
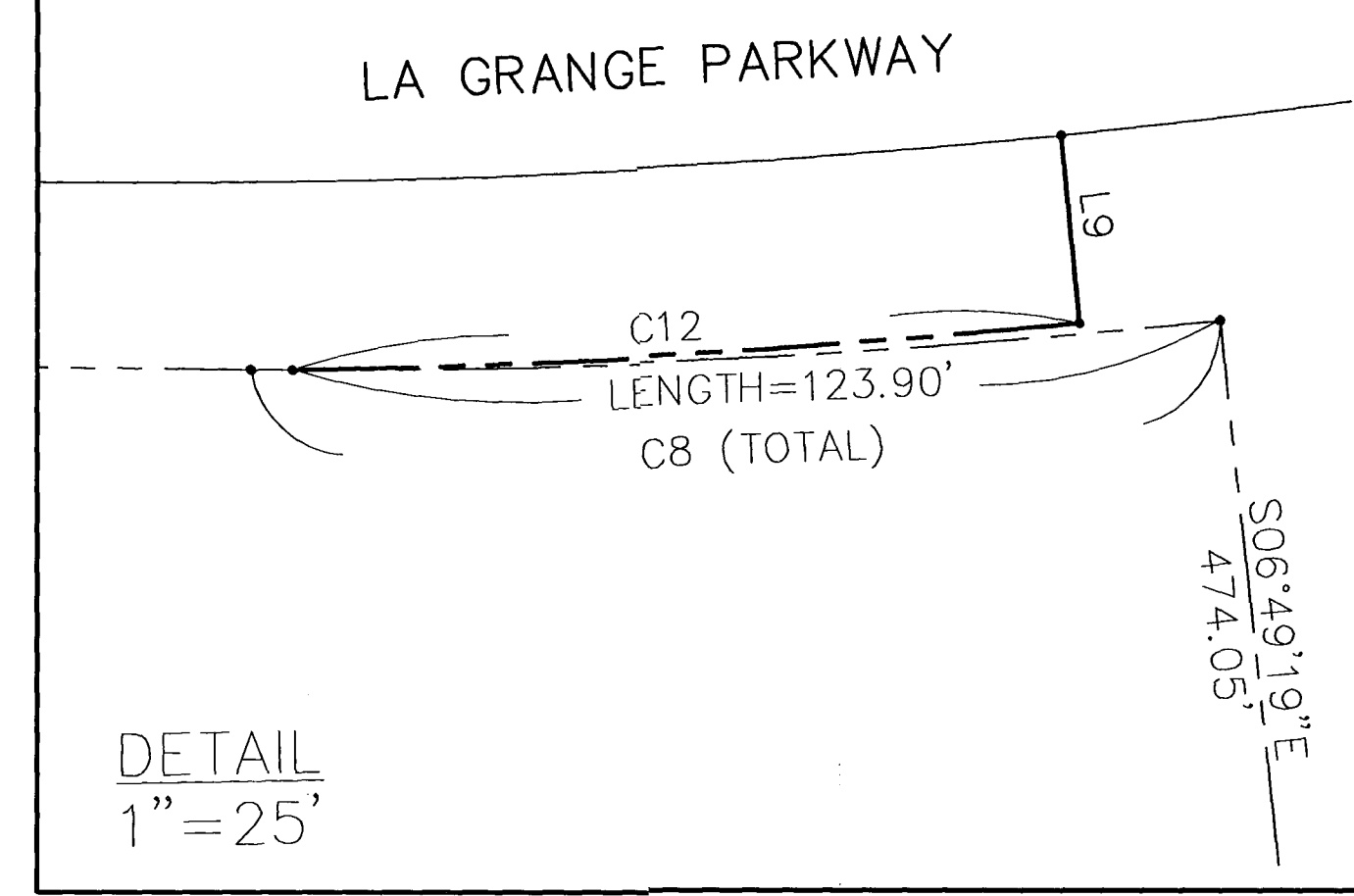


#030034818

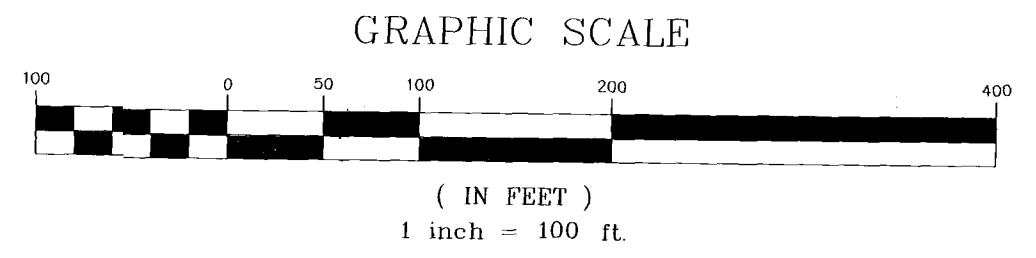
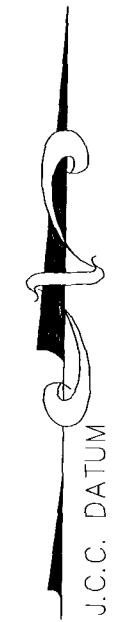
LINE TABLE		
LINE	LENGTH	BEARING
L1	76.02'	N89°43'25"W
L2	62.23'	N90°00'00"E
L3	36.79'	S76°43'27"W
L4	124.52'	S23°28'13"W
L5	5.93'	S66°31'47"E
L6	100.13'	S19°42'25"E
L7	42.85'	S22°34'10"E
L8	25.00'	S00°00'00"W
L9	25.00'	N06°21'17"W
L10	25.00'	S11°36'21"E

CURVE TABLE						
CURVE	RADIUS	LENGTH	TANGENT	CHORD	CHORD BEARING	DELTA
C1	1200.20'	133.12'	66.63'	133.05'	N86°49'21"E	6°21'17"
C2	1200.20'	110.00'	55.04'	109.96'	N81°01'11"E	5°15'04"
C3	1200.20'	187.80'	94.09'	187.61'	N73°54'41"E	8°57'56"
C4	982.00'	392.85'	199.09'	390.24'	N57°58'04"E	22°55'17"
C5	100.00'	109.66'	61.08'	104.25'	S08°16'31"E	62°49'59"
C6	435.60'	353.10'	186.90'	343.52'	S00°39'10"W	46°26'41"
C7	190.36'	75.95'	38.49'	75.45'	N11°08'22"W	22°51'38"
C8	1087.00'	129.42'	64.79'	129.35'	N86°35'20"E	6°49'19"
C10	1225.20'	191.72'	96.05'	191.52'	N73°54'41"E	8°57'56"
C11	1007.00'	434.44'	220.65'	431.08'	N57°04'10"E	24°43'06"
C12	1225.20'	105.17'	52.62'	105.14'	N86°06'16"E	04°55'06"



LEGEND

- STORM MANHOLE ○MH
- STORM DROP INLET ○DI
- FIRE HYDRANT ○FH
- WATER VALVE BOX ●
- SAN. FORCE MAIN VALVE BOX ●FM
- STORM PIPE —ST—
- WATER LINE —W—
- GAS LINE —G—
- EDGE OF PAVEMENT —E—
- OVERHEAD UTILITIES —OH—
- IRON ROD FOUND IRF•
- IRON ROD SET IRS•
- IRON PIPE FOUND IPF•



ALTA/ACSM LAND TITLE SURVEY
 OF A PORTION OF THE PROPERTY OF
STONEHOUSE AT WILLIAMSBURG, LLC
 BEING A PORTION OF TAX PARCEL 0640100001
 AND THE PROPERTY OF
INDUSTRIAL DEVELOPMENT AUTHORITY
 OF JAMES CITY COUNTY
 BEING SECTION A, PARCEL A-2
STONEHOUSE COMMERCE PARK
 STONEHOUSE DISTRICT, JAMES CITY COUNTY, VIRGINIA
 DATE: OCT. 24, 2003
 REVISED OCT. 28, 2003
 SHEET 2 OF 2

City of Williamsburg & County of James City
 Circuit Court: This PLAT was recorded on
 11-07-2003
 at 2:09 PM. PG. 1
 DOCUMENT # 030034818
 BETSY B. WOOLRIDGE, CLERK
Betsy B. Woolridge Clerk



4029 Ironbound Road
 Suite 100
 Williamsburg, VA 23188
 Tel. (757) 253-2975
 Fax (757) 229-0049
 Email: lmdg@landmarkdg.com

 5544 Greenwich Road
 Suite 200
 Virginia Beach, VA 23462
 Tel. (757) 473-2000
 Fax (757) 497-7933
 Email: lmdg@landmarkdg.com

2003166-000.02 Liberty Trust, Wythe-Will, Stinson ALTA\wythe-will-stinson ALTA\wythe-will-LEA5E.dwg