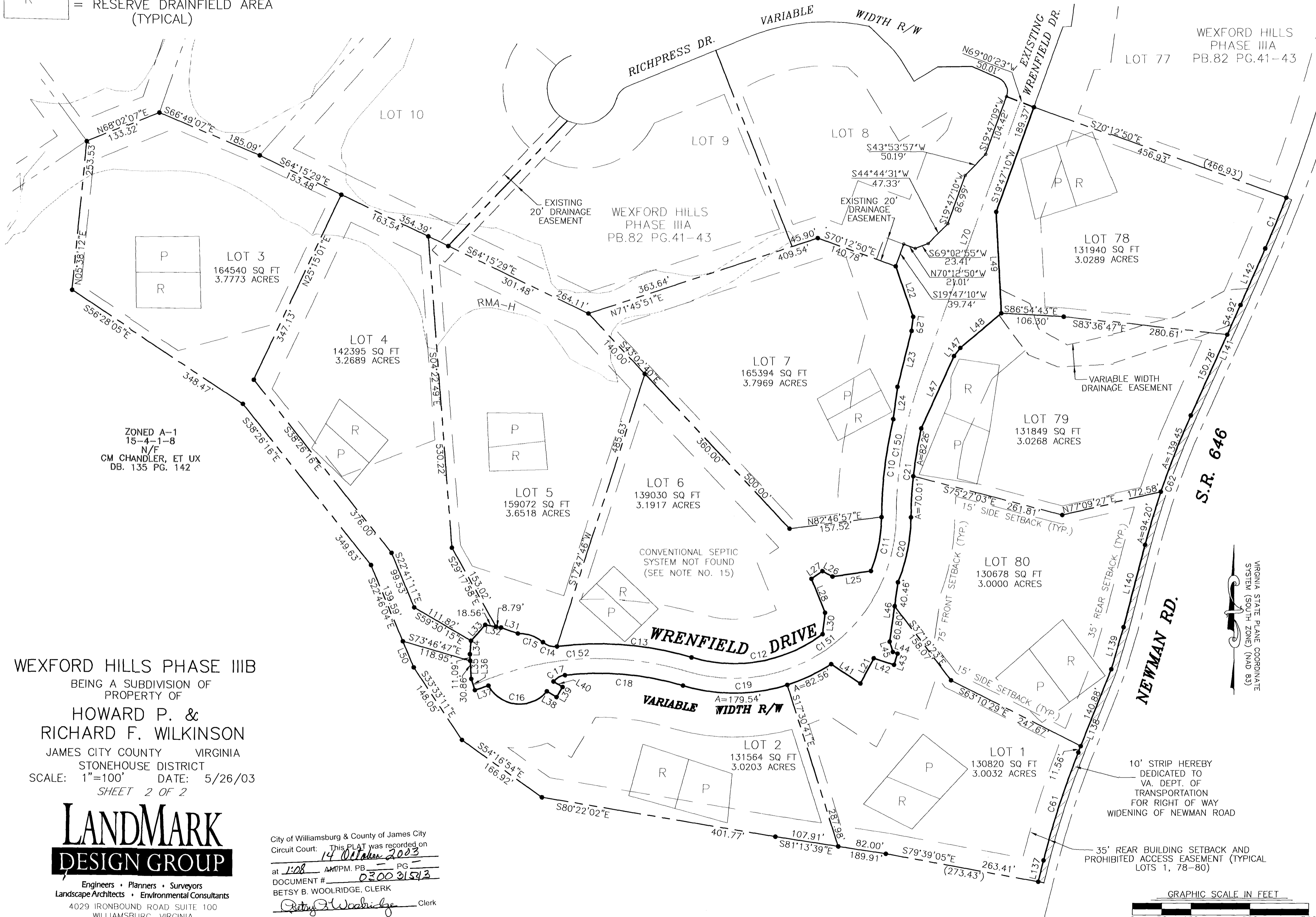


#030031543

P = PRIMARY DRAINFIELD AREA (TYPICAL)
 R = RESERVE DRAINFIELD AREA (TYPICAL)



WEXFORD HILLS PHASE IIIB
 BEING A SUBDIVISION OF
 PROPERTY OF
**HOWARD P. &
 RICHARD F. WILKINSON**
 JAMES CITY COUNTY VIRGINIA
 STONEHOUSE DISTRICT
 SCALE: 1"=100' DATE: 5/26/03
 SHEET 2 OF 2

**LANDMARK
 DESIGN GROUP**

Engineers • Planners • Surveyors
 Landscape Architects • Environmental Consultants
 4029 IRONBOUND ROAD SUITE 100
 WILLIAMSBURG, VIRGINIA
 (757) 253-2975 FAX: (757) 229-0049

City of Williamsburg & County of James City
 Circuit Court: This PLAT was recorded on
14 October 2003
 at 1:08 AM/PM. PB. PG. 3
 DOCUMENT # 030031543
 BETSY B. WOOLRIDGE, CLERK
Betsy B. Woolridge Clerk

