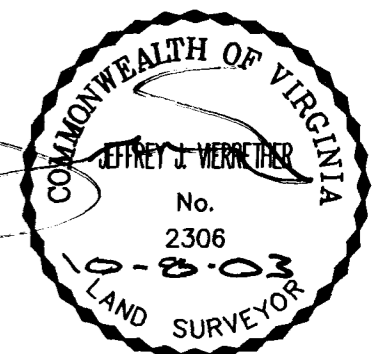
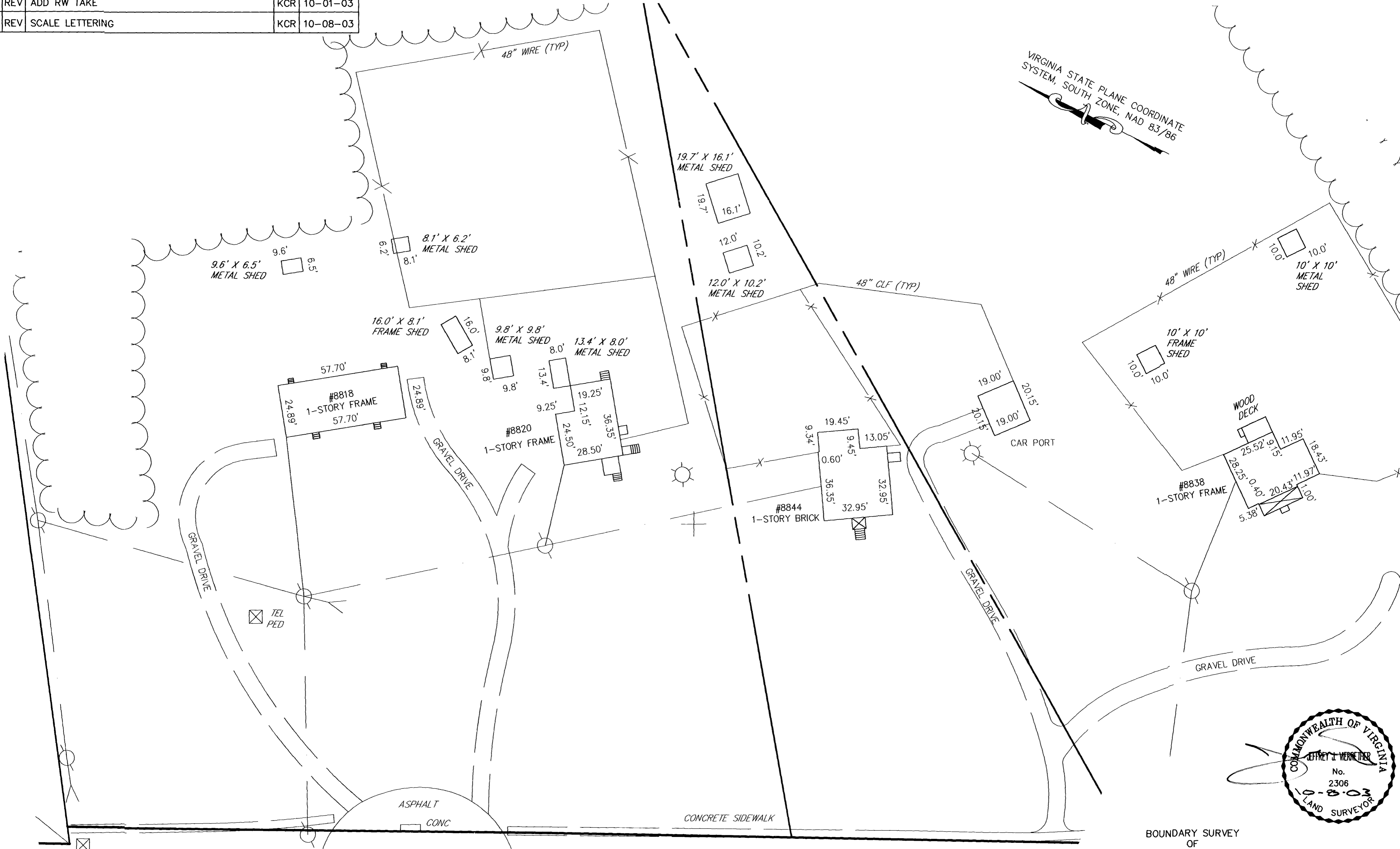


#030031529

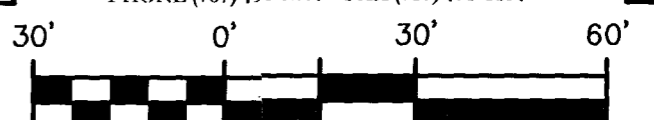
△	REV	ADD RW TAKE	KCR	10-01-03
△	REV	SCALE LETTERING	KCR	10-08-03

VIRGINIA STATE PLANE COORDINATE
SYSTEM, SOUTH ZONE, NAD 83/86



BOUNDARY SURVEY
OF
ROSE MARIE HALL PROPERTY
AS DESCRIBED IN DB 158, PG 741,
LOCATED IN THE JAMESTOWN DISTRICT
JAMES CITY COUNTY VIRGINIA
OCTOBER 1, 2003

MSA, P.C.
Landscape Architecture • Planning • Surveying
Engineering • Environmental Sciences
5033 ROUSE DRIVE, VIRGINIA BEACH, VA 23462-3708
PHONE (757) 490-9264 • FAX (757) 490-0634



GRAPHIC SCALE
1" = 30'

POCAHONTAS TRAIL (VAR. WIDTH R/W) (RTE. 60)

BUILDING DETAIL
SCALE: 1" = 30'

City of Williamsburg & County of James City
Circuit Court: This PLAT was recorded on
14 October 2003
at 11:44 AM/PM, PB PG
DOCUMENT # 030031529
BETSY B. WOOLRIDGE, CLERK
Betsy B. Woolridge Clerk

FB: CS 323, PG 25 & 32
DRWN. BY KCR
CHK'D. BY MAS DATE 10-01-03

JOB# 03066
SHEET 2 OF 2