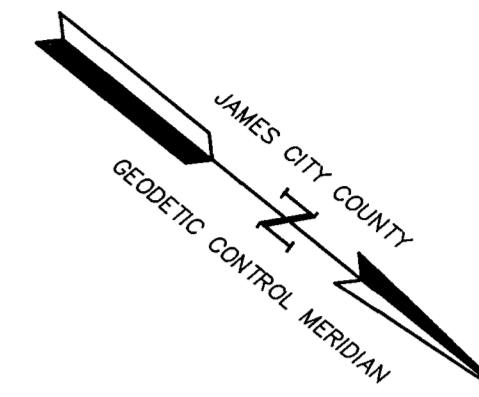
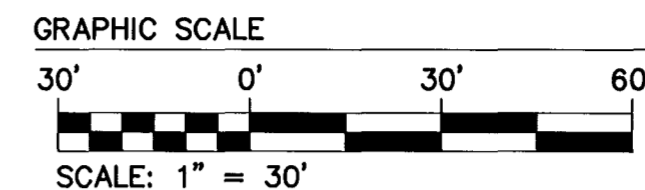


# #030029770

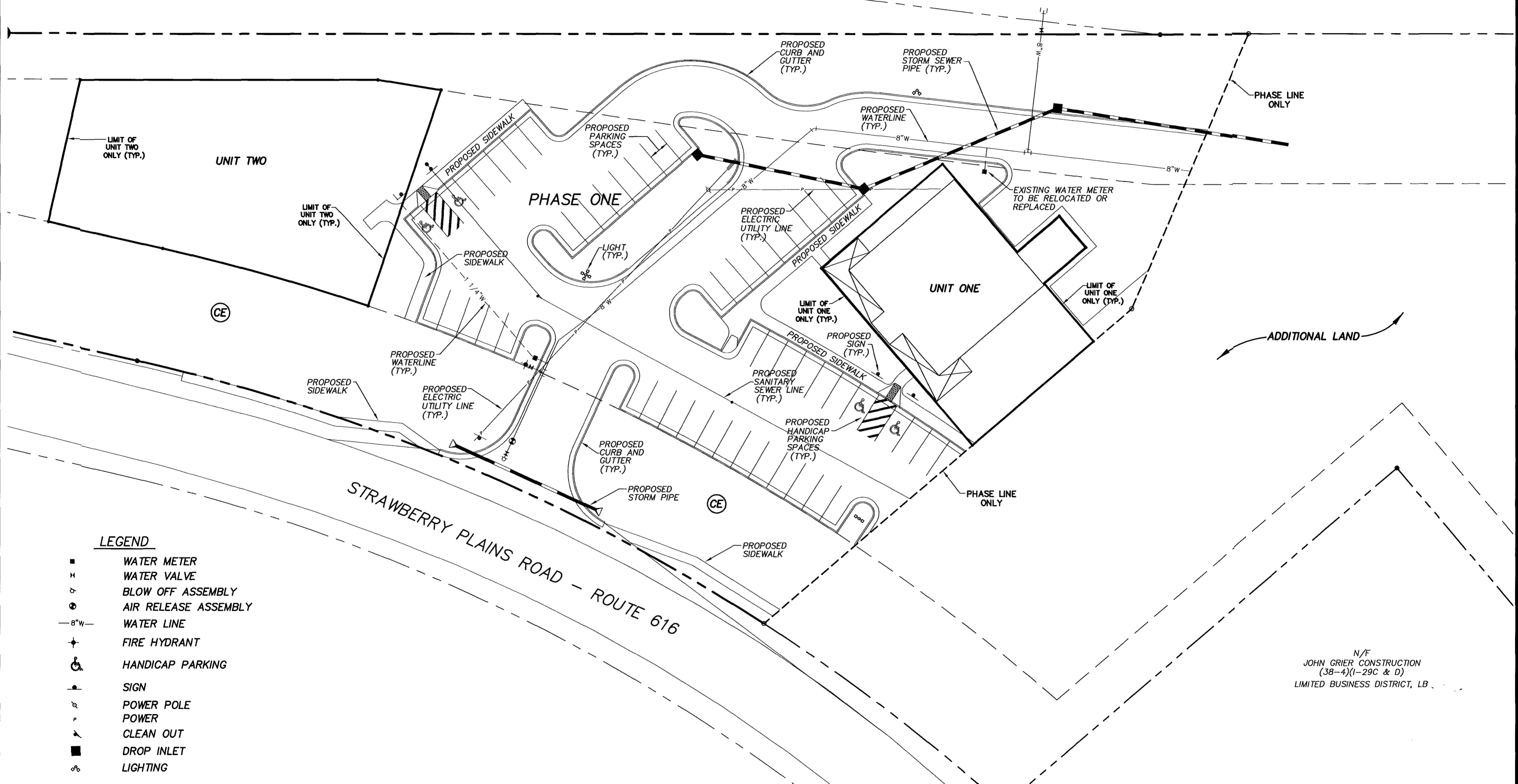
**NOTE:**

THE PURPOSE OF THIS SHEET IS TO SHOW THE PROPOSED IMPROVEMENTS FOR PHASE ONE AS SHOWN ON A SITE PLAN PREPARED BY AES CONSULTING ENGINEERS DATED 5/22/00 AND ENTITLED "SITE PLAN FOR STRAWBERRY PLAINS CENTER, OWNER DEVELOPER STRAWBERRY DEVELOPMENT, L.L.C.". THESE IMPROVEMENTS ARE NOT YET COMPLETED.



N/F  
JAMES CITY COUNTY  
(38-4)(1-38)  
GENERAL BUSINESS DISTRICT, B-1

ROUTE 199

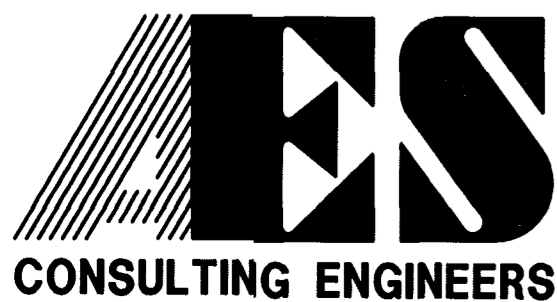


**LEGEND**

- WATER METER
- ⊥ WATER VALVE
- ⊕ BLOW OFF ASSEMBLY
- ⊕ AIR RELEASE ASSEMBLY
- 8"W — WATER LINE
- ⊕ FIRE HYDRANT
- ♿ HANDICAP PARKING
- SIGN
- ⊕ POWER POLE
- ⊕ POWER
- ⊕ CLEAN OUT
- DROP INLET
- ⊕ LIGHTING

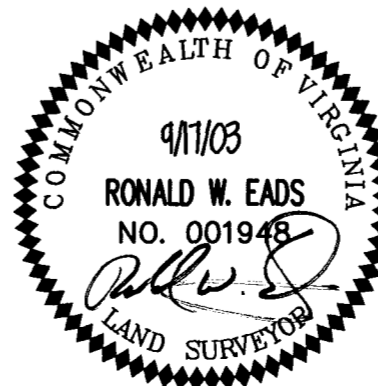
N/F  
JOHN GRIER CONSTRUCTION  
(38-4)(1-29C & D)  
LIMITED BUSINESS DISTRICT, LB

07.01.03-14:31 872001p01.DWG JFS



5248 Olde Towne Road, Suite 1  
Williamsburg, Virginia 23188  
(757) 253-0040  
Fax (757) 220-8994

AMMENDED PLAT OF CONDOMINIUM  
STRAWBERRY PLAINS CENTER  
A CONDOMINIUM  
PHASE ONE  
OWNED BY: W & L LAND, L.L.C.  
JAMESTOWN DISTRICT JAMES CITY COUNTY VIRGINIA



No.	DATE	REVISION / COMMENT / NOTE	BY

City of Williamsburg & County of James City  
Circuit Court: This PLAT was recorded on  
10/23 AM/PM, PB PG  
at 10:23 AM/PM, PB PG  
DOCUMENT # 030029770  
BETSY B. WOOLRIDGE, CLERK  
Betsy B. Woolridge Clerk

Designed AES	Drawn JFS
Scale 1"=30'	Date 9/17/03
Project No. 8720-1	
Drawing No. 2 OF 2	