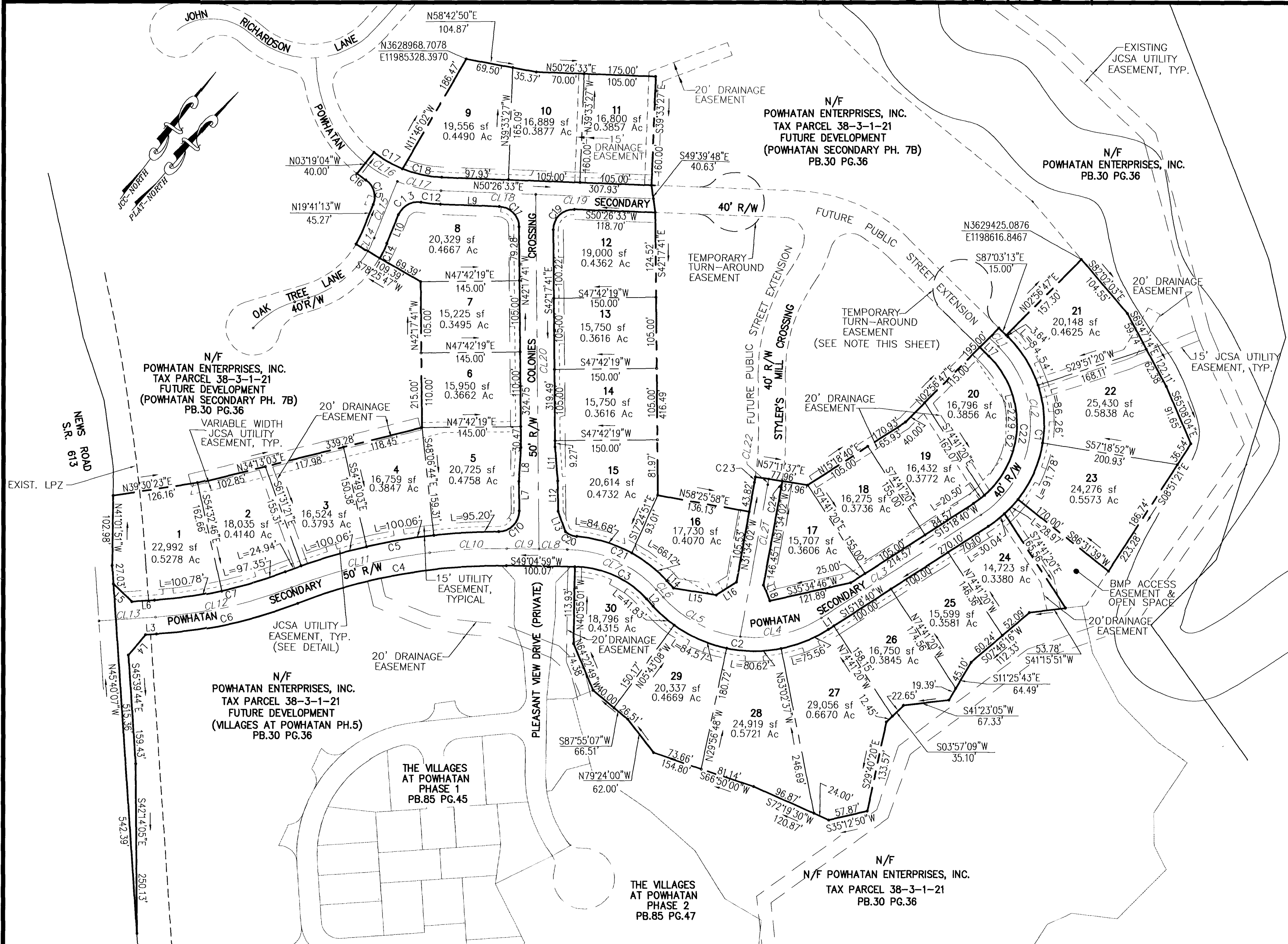


#030029209



N/F
POWHATAN ENTERPRISES, INC.
TAX PARCEL 38-3-1-21
FUTURE DEVELOPMENT
(POWHATAN SECONDARY PH. 7B)
PB.30 PG.36

N/F
POWHATAN ENTERPRISES, INC.
TAX PARCEL 38-3-1-21
FUTURE DEVELOPMENT
(VILLAGES AT POWHATAN PH.5)
PB.30 PG.36

N/F
POWHATAN ENTERPRISES, INC.
TAX PARCEL 38-3-1-21
FUTURE DEVELOPMENT
(POWHATAN SECONDARY PH. 7B)
PB.30 PG.36

N/F
POWHATAN ENTERPRISES, INC.
PB.30 PG.36

THE VILLAGES
AT POWHATAN
PHASE 1
PB.85 PG.45

THE VILLAGES
AT POWHATAN
PHASE 2
PB.85 PG.47

N/F
POWHATAN ENTERPRISES, INC.
TAX PARCEL 38-3-1-21
PB.30 PG.36

SUBDIVISION OF
POWHATAN SECONDARY
OF WILLIAMSBURG
PHASE VII-A
POWHATAN DISTRICT
JAMES CITY COUNTY, VIRGINIA
SCALE: 1"=100' DATE: 11/15/02
SHEET 2 OF 2

ROAD CENTERLINE LINE TABLE

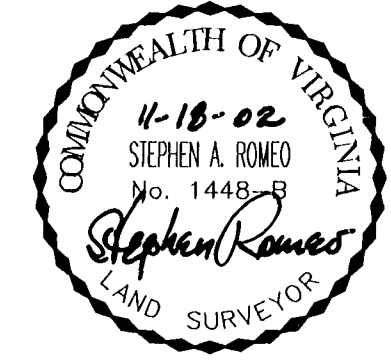
LINE	LENGTH	BEARING
CL1	18.64	N87°03'13"W
CL3	279.50	N15°18'40"E
CL21	227.57	N31°34'02"W
CL6	14.72	S83°44'13"E
CL8-9	88.62	N49°04'59"E
CL20	522.18	N42°17'41"W
CL13	83.73	N44°24'23"E
CL8-9	311.50	S50°26'33"W
CL15	90.00	S19°41'13"E

ROAD CENTERLINE CURVE TABLE

CURVE	LENGTH	RADIUS	TANGENT	CHORD	CHORD BEARING	DELTA
CL2	285.86'	160.00'	198.87'	249.33'	N35°52'16"W	102°21'54"
CL4	124.26'	180.00'	64.72'	121.81'	N35°05'17"E	39°33'13"
CL5	130.06'	180.00'	68.01'	127.25'	N75°33'51"E	41°23'54"
CL22	8.65'	400.00'	4.33'	8.65'	N32°11'13"W	1°14'22"
CL7	148.22'	180.00'	78.60'	144.07'	S72°40'23"W	47°10'49"
CL10	113.27'	830.00'	56.72'	113.18'	S45°10'24"W	7°49'09"
CL11	209.43'	830.00'	105.28'	208.88'	S34°02'06"W	14°27'27"
CL12	205.81'	670.00'	103.72'	205.00'	N35°36'23"E	17°36'01"
CL16	55.71'	190.00'	28.06'	55.51'	N78°42'48"E	16°48'01"
CL17	65.89'	190.00'	33.28'	65.56'	N60°22'40"E	36°40'16"
CL14	21.25'	150.00'	10.64'	21.23'	N15°37'43"W	19°52'15"

NOTE: THIS RIGHT OF WAY IS PLATTED WITH THE INTENT OF BEING EXTENDED AND CONTINUED IN ORDER TO PROVIDE INGRESS AND EGRESS TO AND FROM FUTURE SUBDIVISION OR ADJACENT PROPERTY.

City of Williamsburg & County of James City
Circuit Court: This PLAT was recorded on
1 October 2003
at 8:50 AM/P.M. PB. PG.
DOCUMENT # 030029209
BETSY B. WOOLRIDGE, CLERK
Betsy B. Woolridge Clerk



LANDMARK DESIGN GROUP
Engineers • Planners • Surveyors
and Landscape Architects • Environmental Consultants
4029 Ironbound Road, Suite 100
Williamsburg, VA 23188
Tel. (757) 253-2975 Fax (757) 229-0049
Email: lmdg@landmarkdg.com