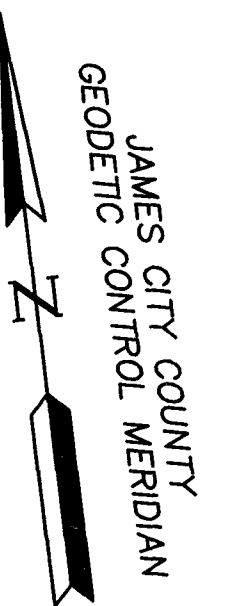


030026253



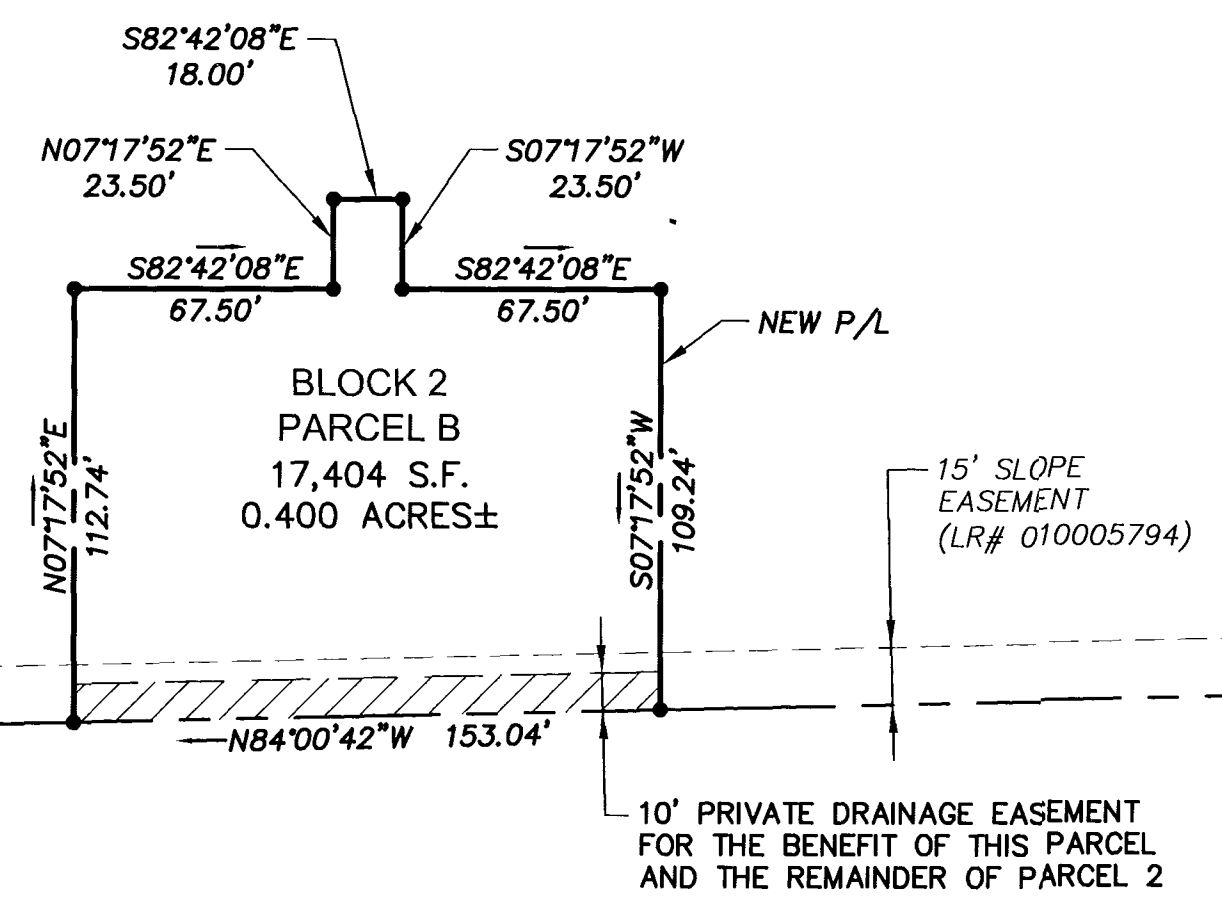
BLOCK 5, PARCEL C
PER PLAT BY
AES CONSULTING ENGINEERS
ENTITLED "PLAT OF SUBDIVISION
BOUNDARY LINE ADJUSTMENT BEING A
PORTION OF THE PROPERTY OWNED BY
NEW TOWN ASSOCIATES, LLC
AND CASEY OFFICE, L.L.C"
DATED 1/21/03

CASEY OFFICE, L.L.C.
(38-4)(1-56)
L.R.#0200223489
BLOCK 5, PARCEL B
REVISED PER PLAT BY
AES CONSULTING ENGINEERS
ENTITLED "PLAT OF SUBDIVISION
BOUNDARY LINE ADJUSTMENT BEING A
PORTION OF THE PROPERTY OWNED BY
NEW TOWN ASSOCIATES, LLC
AND CASEY OFFICE, L.L.C"
DATED 1/21/03

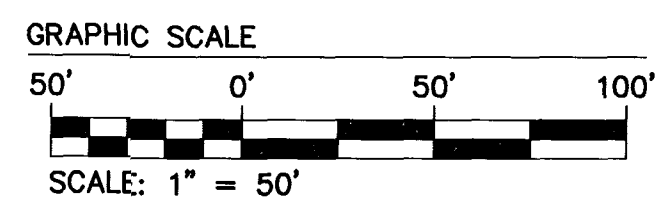
COURTHOUSE STREET
(VARIABLE WIDTH R/W)

COURTHOUSE STREET R/W PER
PLAT BY AES CONSULTING
ENGINEERS ENTITLED "PLAT OF
SUBDIVISION BOUNDARY LINE
ADJUSTMENT BEING A PORTION
OF THE PROPERTY OWNED BY
NEW TOWN ASSOCIATES, LLC
AND CASEY OFFICE, L.L.C"
DATED 1/21/03.

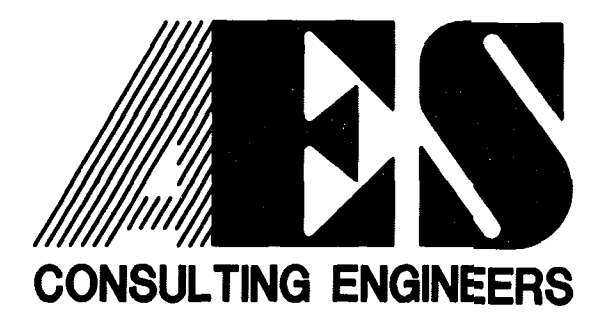
PARCEL 2
PER PLAT BY
AES CONSULTING ENGINEERS
ENTITLED "PLAT OF SUBDIVISION AND
LOT LINE EXTINGUISHMENT SHOWING
PARCELS "2" AND "3" OWNED BY
NEW TOWN ASSOCIATES, LLC"
DATED 1/08/03
REMAINING AREA
82.66 ACRES±



MONTICELLO AVE.
(VARIABLE WIDTH R/W)
(LR# 010005794)



EAW 05.15.03-10:32 6632E131.p02.dwg



5248 Olde Towne Road, Suite 1
Williamsburg, Virginia 23188
(757) 253-0040
Fax (757) 220-8994

PLAT OF SUBDIVISION
BLOCK 2, PARCEL B
BEING A PORTION OF THE PROPERTY OWNED BY
NEW TOWN ASSOCIATES, LLC

BERKELEY DISTRICT COUNTY OF JAMES CITY VIRGINIA



City of Williamsburg & County of James City	
Circuit Court: This PLAT was recorded on <u>3 September 2003</u>	
at <u>1:19</u> AM/PM, PB <u> </u> PG <u> </u>	
DOCUMENT # <u>030026253</u>	
BETSY B. WOOLRIDGE, CLERK	
<i>Betsy B. Woolridge</i> Clerk	
1. 5/22/03	REVISED PER JAMES CITY COUNTY COMMENTS
No.	DATE
	REVISION / COMMENT / NOTE
	BY

Designed GAM	Drawn RMK
Scale 1"=50'	Date 3/27/03
Project No. 6632-E-13-1	
Drawing No. 2 OF 2	