

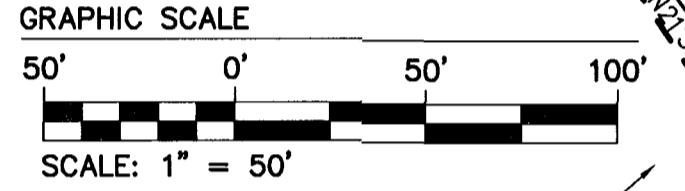
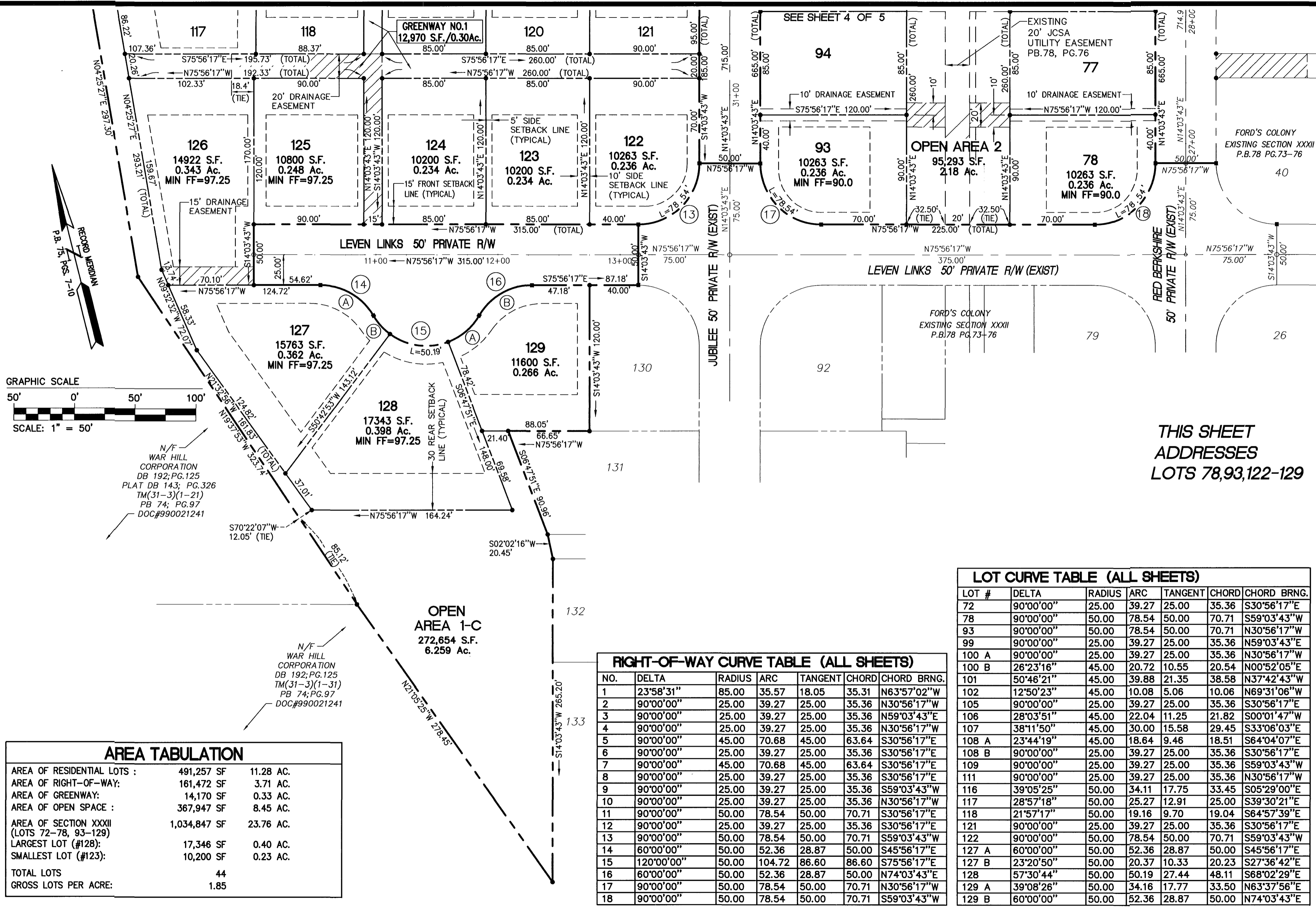
90 PAGE 52

#030017011

FC32CP05.dwg

05.08.03-15:54

DLD



N/F  
WAR HILL  
CORPORATION  
DB 192; PG.125  
PLAT DB 143; PG.326  
TM(31-3)(1-21)  
PB 74; PG.97  
DOC#990021241

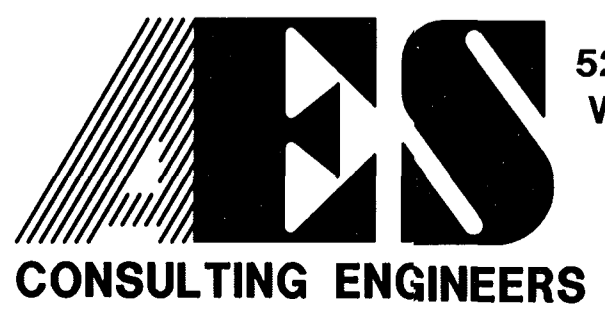
N/F  
WAR HILL  
CORPORATION  
DB 192; PG.125  
TM(31-3)(1-31)  
PB 74; PG.97  
DOC#990021241

AREA TABULATION		
AREA OF RESIDENTIAL LOTS :	491,257 SF	11.28 AC.
AREA OF RIGHT-OF-WAY:	161,472 SF	3.71 AC.
AREA OF GREENWAY:	14,170 SF	0.33 AC.
AREA OF OPEN SPACE :	367,947 SF	8.45 AC.
AREA OF SECTION XXXII (LOTS 72-78, 93-129)	1,034,847 SF	23.76 AC.
LARGEST LOT (#128):	17,346 SF	0.40 AC.
SMALLEST LOT (#123):	10,200 SF	0.23 AC.
TOTAL LOTS	44	
GROSS LOTS PER ACRE:	1.85	

RIGHT-OF-WAY CURVE TABLE (ALL SHEETS)						
NO.	DELTA	RADIUS	ARC	TANGENT	CHORD	CHORD BRNG.
1	23°58'31"	85.00	35.57	18.05	35.31	N63°57'02"W
2	90°00'00"	25.00	39.27	25.00	35.36	N30°56'17"W
3	90°00'00"	25.00	39.27	25.00	35.36	N59°03'43"E
4	90°00'00"	25.00	39.27	25.00	35.36	N30°56'17"W
5	90°00'00"	45.00	70.68	45.00	63.64	S30°56'17"E
6	90°00'00"	25.00	39.27	25.00	35.36	S30°56'17"E
7	90°00'00"	45.00	70.68	45.00	63.64	S30°56'17"E
8	90°00'00"	25.00	39.27	25.00	35.36	S30°56'17"E
9	90°00'00"	25.00	39.27	25.00	35.36	S59°03'43"W
10	90°00'00"	25.00	39.27	25.00	35.36	N30°56'17"W
11	90°00'00"	50.00	78.54	50.00	70.71	S30°56'17"E
12	90°00'00"	25.00	39.27	25.00	35.36	S30°56'17"E
13	90°00'00"	50.00	78.54	50.00	70.71	S59°03'43"W
14	60°00'00"	50.00	52.36	28.87	50.00	S45°56'17"E
15	120°00'00"	50.00	104.72	86.60	86.60	S75°56'17"E
16	60°00'00"	50.00	52.36	28.87	50.00	N74°03'43"E
17	90°00'00"	50.00	78.54	50.00	70.71	N30°56'17"W
18	90°00'00"	50.00	78.54	50.00	70.71	S59°03'43"W

LOT CURVE TABLE (ALL SHEETS)						
LOT #	DELTA	RADIUS	ARC	TANGENT	CHORD	CHORD BRNG.
72	90°00'00"	25.00	39.27	25.00	35.36	S30°56'17"E
78	90°00'00"	50.00	78.54	50.00	70.71	S59°03'43"W
93	90°00'00"	50.00	78.54	50.00	70.71	N30°56'17"W
99	90°00'00"	25.00	39.27	25.00	35.36	N59°03'43"E
100 A	90°00'00"	25.00	39.27	25.00	35.36	N30°56'17"W
100 B	26°23'16"	45.00	20.72	10.55	20.54	N00°52'05"E
101	50°46'21"	45.00	39.88	21.35	38.58	N37°42'43"W
102	12°50'23"	45.00	10.08	5.06	10.06	N69°31'06"W
105	90°00'00"	25.00	39.27	25.00	35.36	S30°56'17"E
106	28°03'51"	45.00	22.04	11.25	21.82	S00°01'47"W
107	38°11'50"	45.00	30.00	15.58	29.45	S33°06'03"E
108 A	23°44'19"	45.00	18.64	9.46	18.51	S64°04'07"E
108 B	90°00'00"	25.00	39.27	25.00	35.36	S30°56'17"E
109	90°00'00"	25.00	39.27	25.00	35.36	S59°03'43"W
111	90°00'00"	25.00	39.27	25.00	35.36	N30°56'17"W
116	39°05'25"	50.00	34.11	17.75	33.45	S05°29'00"E
117	28°57'18"	50.00	25.27	12.91	25.00	S39°30'21"E
118	21°57'17"	50.00	19.16	9.70	19.04	S64°57'39"E
121	90°00'00"	25.00	39.27	25.00	35.36	S30°56'17"E
122	90°00'00"	50.00	78.54	50.00	70.71	S59°03'43"W
127 A	60°00'00"	50.00	52.36	28.87	50.00	S45°56'17"E
127 B	23°20'50"	50.00	20.37	10.33	20.23	S27°36'42"E
128	57°30'44"	50.00	50.19	27.44	48.11	S68°02'29"E
129 A	39°08'26"	50.00	34.16	17.77	33.50	N63°37'56"E
129 B	60°00'00"	50.00	52.36	28.87	50.00	N74°03'43"E

THIS SHEET  
ADDRESSES  
LOTS 78,93,122-129



5248 Olde Towne Road, Suite 1  
Williamsburg, Virginia 23188  
(757) 253-0040  
Fax (757) 220-8994

PLAT OF SUBDIVISION  
SECTION XXXII  
LOTS 72 - 78, 93 - 129  
**FORD'S COLONY  
AT WILLIAMSBURG**  
POWhatan DISTRICT      JAMES CITY COUNTY      VIRGINIA



No.	DATE	REVISION / COMMENT / NOTE	BY
		City of Williamsburg & County of James City Circuit Court: This PLAT was recorded on 9 June 2003 at 1:08 AM/PM, PB 92 PG 48-52 DOCUMENT # 231017011 BETSY B. WOOLRIDGE, CLERK Betsy B. Woolridge Clerk	

Designed CBR	Drawn AES
Scale 1"=50'	Date 6/22/01
Project No. 5652-32C	
Drawing No. 5 OF 5	