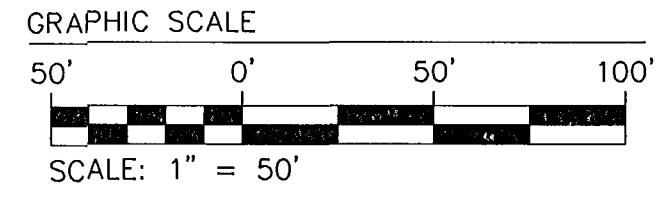


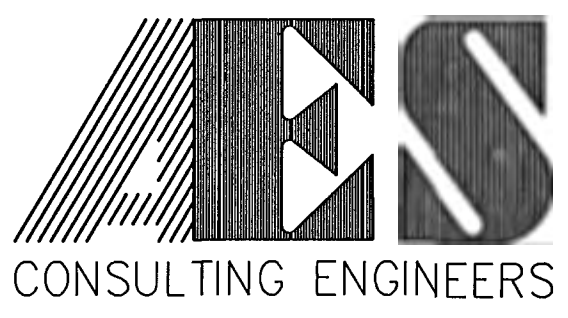
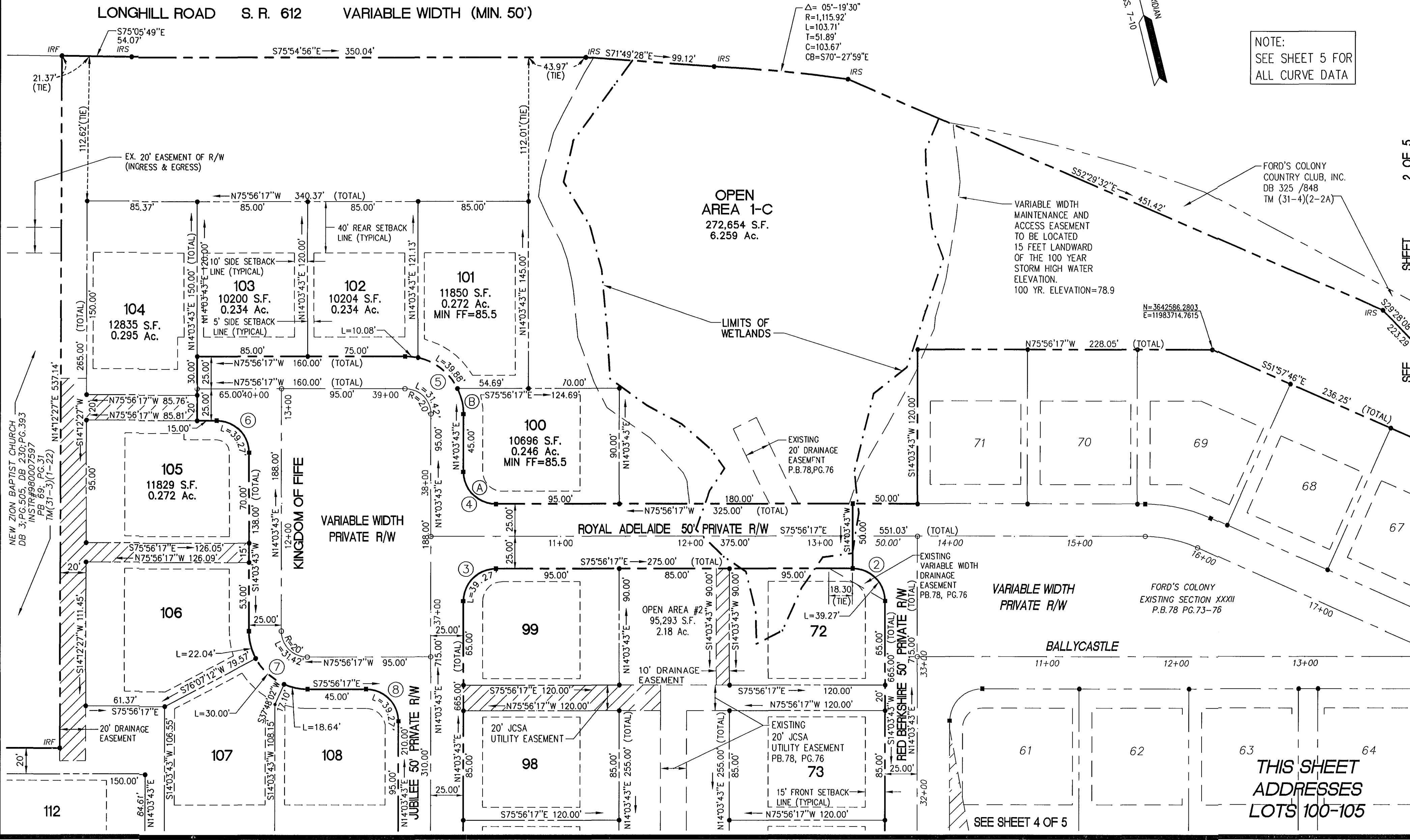
90 PAGE 50

#036017011

LBA 06.21.01-17:02 FC32CP03.dwg



NOTE: SEE SHEET 5 FOR ALL CURVE DATA



5248 Olde Towne Road, Suite 1  
Williamsburg, Virginia 23188  
(757) 253-0040  
Fax (757) 220-8994

PLAT OF SUBDIVISION  
SECTION XXII  
LOTS 72 - 78, 93 - 129  
**FORD'S COLONY  
AT WILLIAMSBURG**  
POWHATAN DISTRICT JAMES CITY COUNTY VIRGINIA



No.	DATE	REVISION / COMMENT / NOTE	BY

City of Williamsburg & County of James City  
Circuit Court: This PLAT was recorded on  
*9 June 2003*  
at *1:08* AM/PM, PB *90* PG *48-52*  
DOCUMENT # *030017011*  
BETSY B. WOOLRIDGE, CLERK  
*Betsy B. Woolridge* Clerk

Designed CBR	Drawn AES
Scale 1"=50'	Date 6/22/01
Project No. 5652-32C	
Drawing No. 3 OF 5	