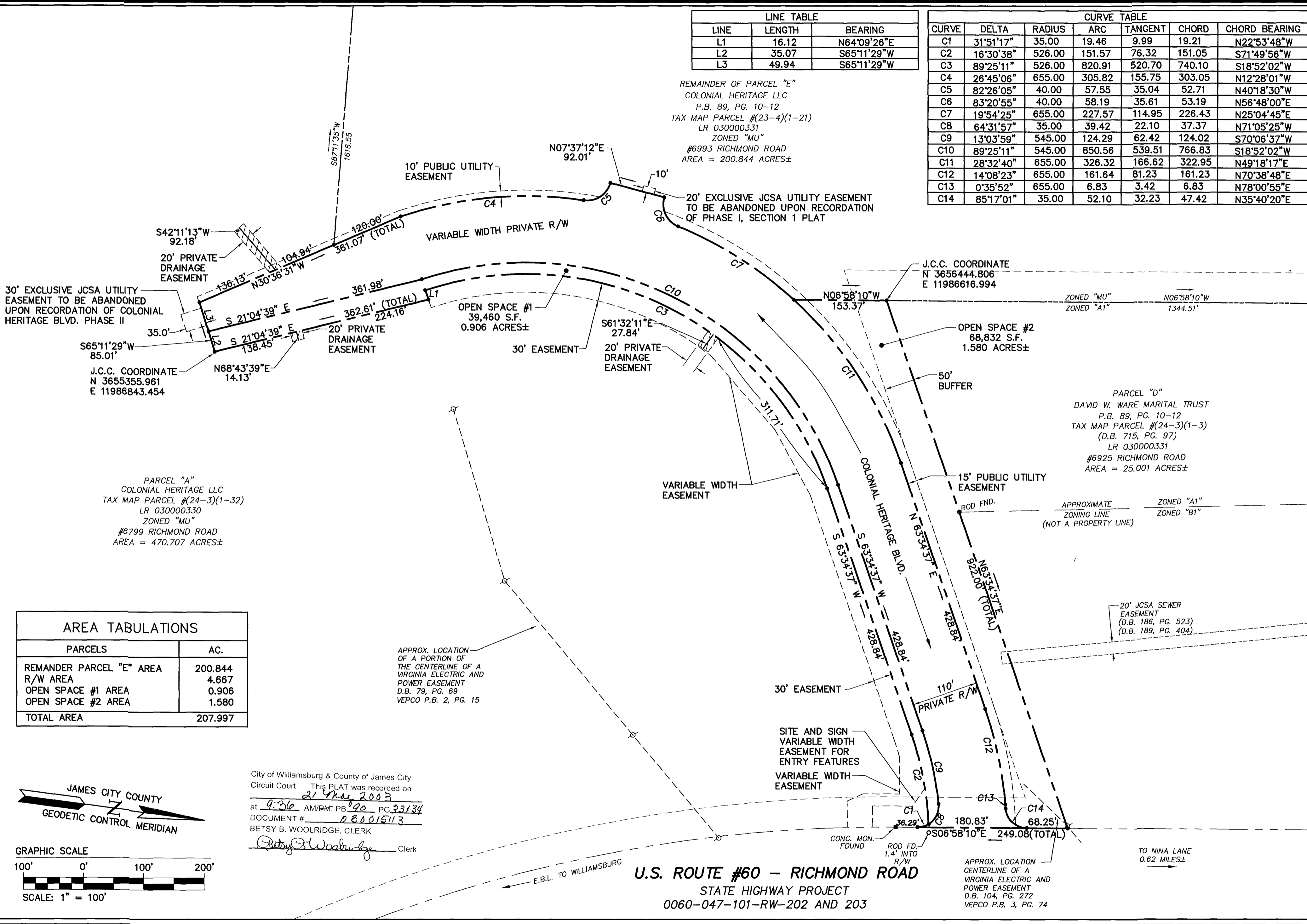


LINE TABLE		
LINE	LENGTH	BEARING
L1	16.12	N64°09'26"E
L2	35.07	S65°11'29"W
L3	49.94	S65°11'29"W

CURVE TABLE						
CURVE	DELTA	RADIUS	ARC	TANGENT	CHORD	CHORD BEARING
C1	31°51'17"	35.00	19.46	9.99	19.21	N22°53'48"W
C2	16°30'38"	526.00	151.57	76.32	151.05	S71°49'56"W
C3	89°25'11"	526.00	820.91	520.70	740.10	S18°52'02"W
C4	26°45'06"	655.00	305.82	155.75	303.05	N12°28'01"W
C5	82°26'05"	40.00	57.55	35.04	52.71	N40°18'30"W
C6	83°20'55"	40.00	58.19	35.61	53.19	N56°48'00"E
C7	19°54'25"	655.00	227.57	114.95	226.43	N25°04'45"E
C8	64°31'57"	35.00	39.42	22.10	37.37	N71°05'25"W
C9	13°03'59"	545.00	124.29	62.42	124.02	S70°06'37"W
C10	89°25'11"	545.00	850.56	539.51	766.83	S18°52'02"W
C11	28°32'40"	655.00	326.32	166.62	322.95	N49°18'17"E
C12	14°08'23"	655.00	161.64	81.23	161.23	N70°38'48"E
C13	0°35'52"	655.00	6.83	3.42	6.83	N78°00'55"E
C14	85°17'01"	35.00	52.10	32.23	47.42	N35°40'20"E

REMAINDER OF PARCEL "E"  
 COLONIAL HERITAGE LLC  
 P.B. 89, PG. 10-12  
 TAX MAP PARCEL #(23-4)(1-21)  
 LR 030000331  
 ZONED "MU"  
 #6993 RICHMOND ROAD  
 AREA = 200.844 ACRES±



PARCEL "A"  
 COLONIAL HERITAGE LLC  
 TAX MAP PARCEL #(24-3)(1-32)  
 LR 030000330  
 ZONED "MU"  
 #6799 RICHMOND ROAD  
 AREA = 470.707 ACRES±

PARCEL "D"  
 DAVID W. WARE MARITAL TRUST  
 P.B. 89, PG. 10-12  
 TAX MAP PARCEL #(24-3)(1-3)  
 (D.B. 715, PG. 97)  
 LR 030000331  
 #6925 RICHMOND ROAD  
 AREA = 25.001 ACRES±

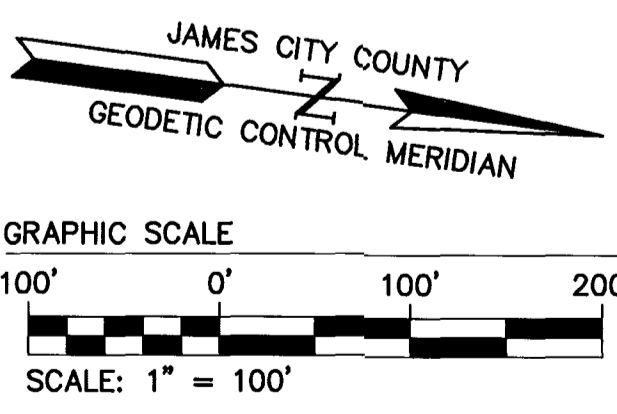
APPROX. LOCATION  
 OF A PORTION OF  
 THE CENTERLINE OF A  
 VIRGINIA ELECTRIC AND  
 POWER EASEMENT  
 D.B. 79, PG. 69  
 VEPCO P.B. 2, PG. 15

APPROXIMATE  
 ZONING LINE  
 (NOT A PROPERTY LINE)

APPROX. LOCATION  
 CENTERLINE OF A  
 VIRGINIA ELECTRIC AND  
 POWER EASEMENT  
 D.B. 104, PG. 272  
 VEPCO P.B. 3, PG. 74

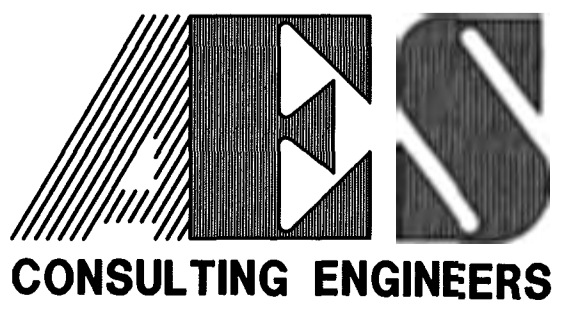
AREA TABULATIONS	
PARCELS	AC.
REMAINDER PARCEL "E" AREA	200.844
R/W AREA	4.667
OPEN SPACE #1 AREA	0.906
OPEN SPACE #2 AREA	1.580
TOTAL AREA	207.997

City of Williamsburg & County of James City  
 Circuit Court: This PLAT was recorded on  
 at 9:36 AM/PM: PB 90 PG 33134  
 DOCUMENT # 030015113  
 BETSY B. WOOLRIDGE, CLERK  
 Clerk



U.S. ROUTE #60 - RICHMOND ROAD  
 STATE HIGHWAY PROJECT  
 0060-047-101-RW-202 AND 203

HEB 03.25.03-13:37 88815p02.dwg



5248 Olde Towne Road, Suite 1  
 Williamsburg, Virginia 23188  
 (757) 253-0040  
 Fax (757) 220-8994

**PLAT SHOWING  
 COLONIAL HERITAGE BOULEVARD  
 A VARIABLE WIDTH PRIVATE  
 RIGHT-OF-WAY  
 PREPARED FOR COLONIAL HERITAGE LLC**

STONEHOUSE DISTRICT      JAMES CITY COUNTY      VIRGINIA



No.	DATE	REVISION / COMMENT / NOTE	BY
1	3/25/03	REVISIONS PER JCC COMMENTS DATED 3/21/03	GTW

Designed AES	Drawn AES
Scale 1"=100'	Date 2/14/03
Project No. 8881-05	
Drawing No. 2 OF 2	