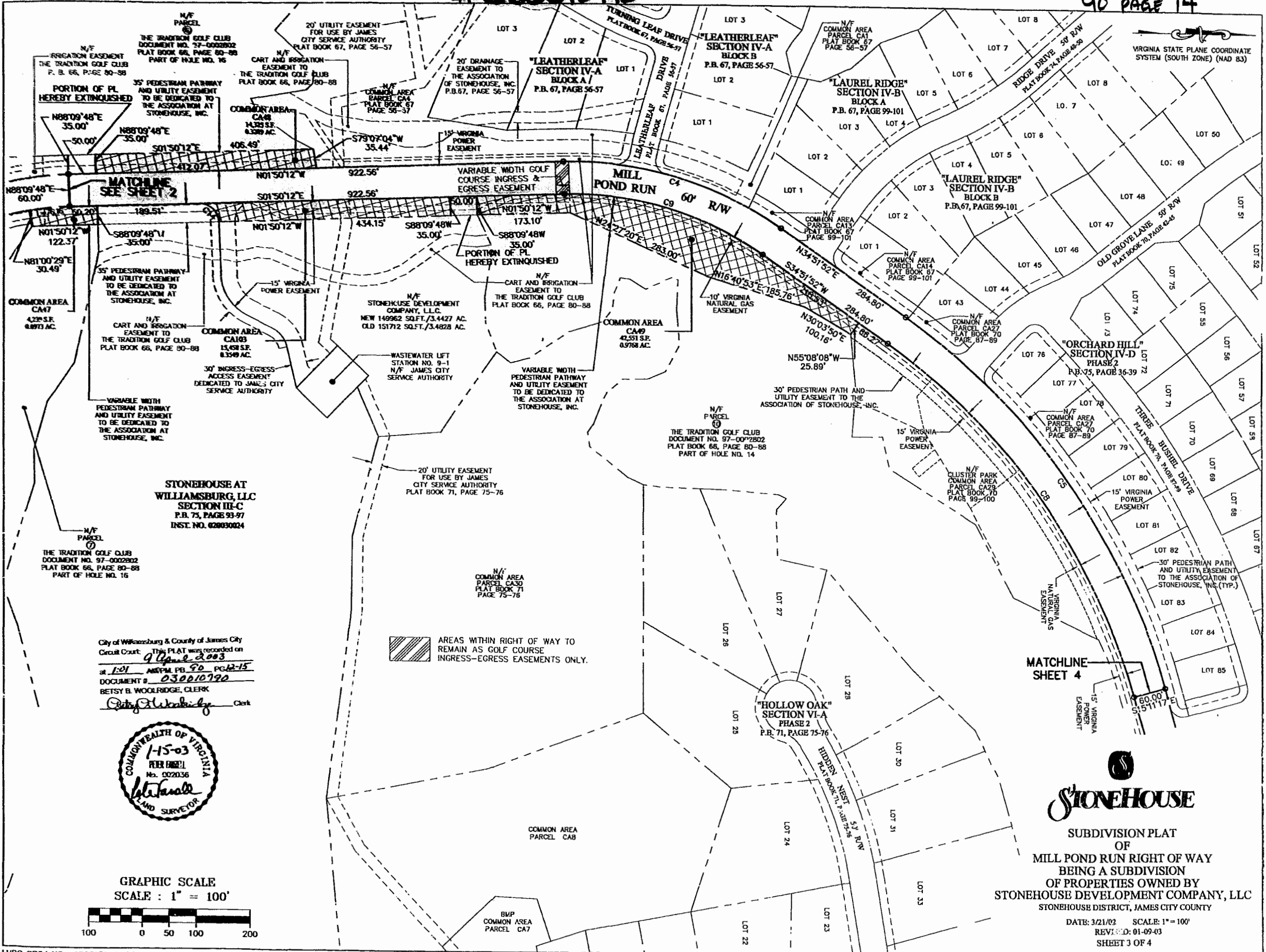


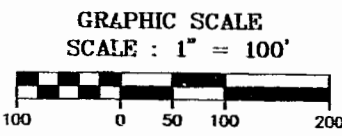
# 030010790

90 PAGE 14



**STONEHOUSE AT WILLIAMSBURG, LLC SECTION III-C**  
 P.B. 75, PAGE 93-97  
 INST. NO. 020030024

City of Williamsburg & County of James City  
 Circuit Court: This PLAT was recorded on  
*9 June 2003*  
 at 1:01 P.M. P.B. 75 PG. 93-97  
 DOCUMENT # 030010790  
 BETSY B. WOOLRIDGE, CLERK  
*Betsy Woolridge* Clerk



AREAS WITHIN RIGHT OF WAY TO REMAIN AS GOLF COURSE INGRESS-EGRESS EASEMENTS ONLY.

MATCHLINE SHEET 4



**STONEHOUSE**  
 SUBDIVISION PLAT OF  
 MILL POND RUN RIGHT OF WAY  
 BEING A SUBDIVISION OF PROPERTIES OWNED BY  
 STONEHOUSE DEVELOPMENT COMPANY, LLC  
 STONEHOUSE DISTRICT, JAMES CITY COUNTY

DATE: 3/21/02 SCALE: 1" = 100'  
 REVISED: 01-09-03  
 SHEET 3 OF 4