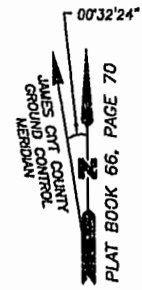


AMENDED PLAT OF SUBDIVISION
(SECOND AMENDMENT)
WATERFORD
AT
POWHATAN SECONDARY
PHASE THIRTY-TWO
BERKELEY DISTRICT
JAMES CITY COUNTY, VIRGINIA

DATE: 10/21/98 SHEET 2 OF 3 SCALE: 1"=100'
PROJECT NO: 97-008 DRAWN BY: SJB

SA SLEDD & ASSOCIATES, P.C.
ENGINEERS, PLANNERS, SURVEYORS
11832 ROCK LANDING DRIVE, SUITE 203
NEWPORT NEWS, VIRGINIA 23606
(757) 873-3386

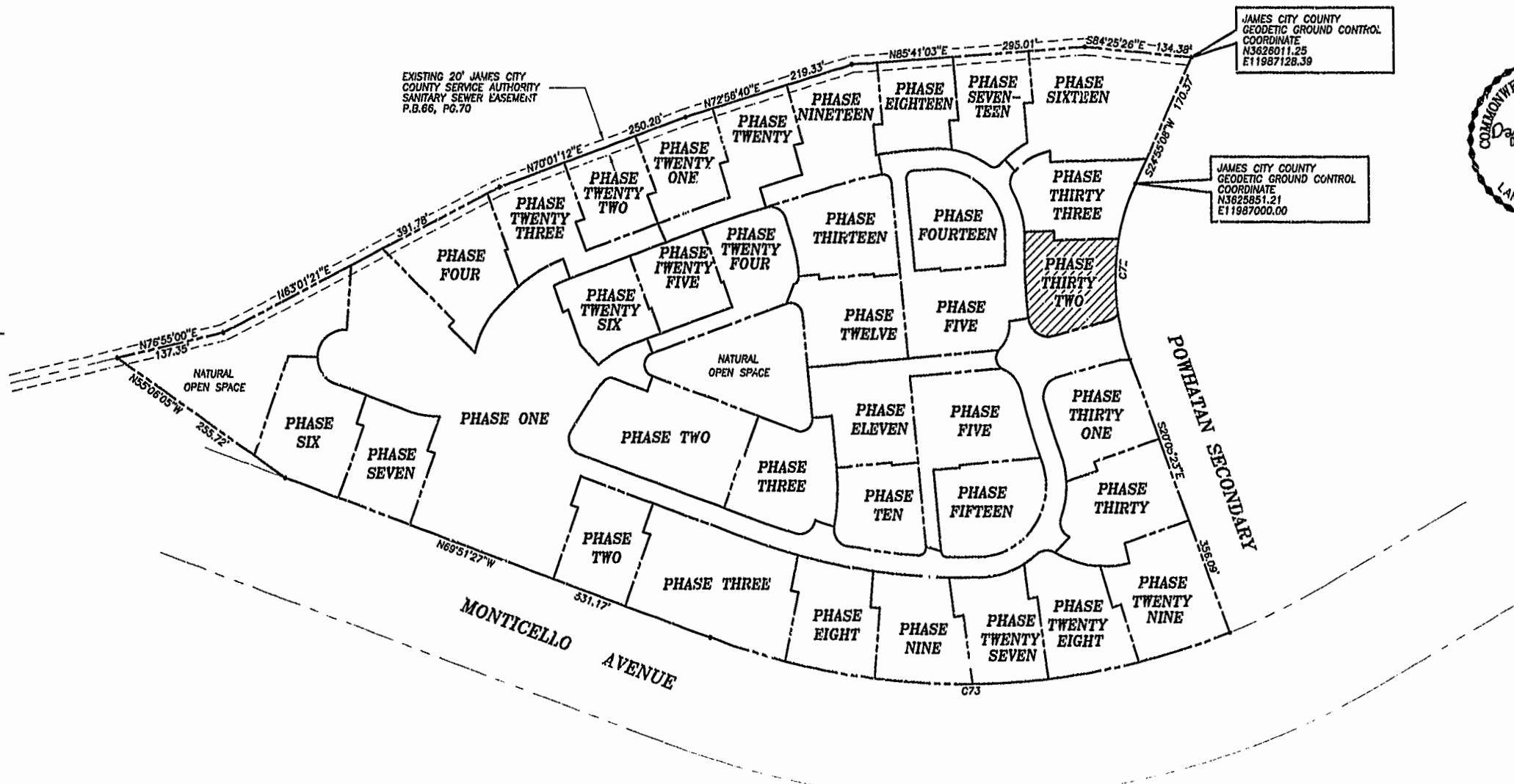


NOW OR FORMERLY
POWHATAN ENTERPRISES, INC.

EXISTING 20' JAMES CITY
COUNTY SERVICE AUTHORITY
SANITARY SEWER EASEMENT
P.B.66, PG.70

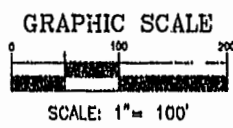
JAMES CITY COUNTY
GEODETIC GROUND CONTROL
COORDINATE
N3628011.25
E11987128.39

JAMES CITY COUNTY
GEODETIC GROUND CONTROL
COORDINATE
N3628851.21
E11987000.00



CURVE DATA

NUMBER	DELTA	RADIUS	LENGTH	TANGENT	CHORD	CHORD BEARING
C72	45°00'31"	280.00'	219.95'	116.00'	214.34'	S02°24'52"W
C73	41°26'14"	924.91'	668.91'	349.84'	654.43'	S89°25'26"W



City of Williamsburg & County of James City
Circuit Court: This PLAT was recorded on
24 May 2003
at 12:51 AM P.M. PB. 89 PG. 97-99
DOCUMENT # 03008599
BETSY B. WOOLRIDGE, CLERK
Betsy B. Woolridge Clerk