

# 030006189

89 PAGE 66

STATE OF VIRGINIA COUNTY OF JAMES CITY  
IN THE CLERK'S OFFICE OF THE CIRCUIT COURT OF THE  
COUNTY OF JAMES CITY THIS 21 DAY OF February  
2003, THE MAP SHOWN HEREON WAS PRESENTED AND ADMITTED  
TO THE RECORD AS THE LAW DIRECTS. @ 2:04 PM

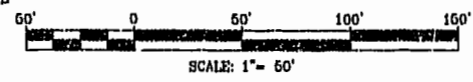
TESTE: Betsy B. Woolridge CLERK  
PLAT BOOK 89 PAGE 60-66

NOTE "A": VARIABLE WIDTH J.C.S.A.  
UTILITY EASEMENT  
NOTE "D": TEMPORARY CONSTRUCTION EASEMENT  
TO BE VACATED UPON COMPLETION  
OF THE EXTENSION OF SCOTT'S POND  
DRIVE

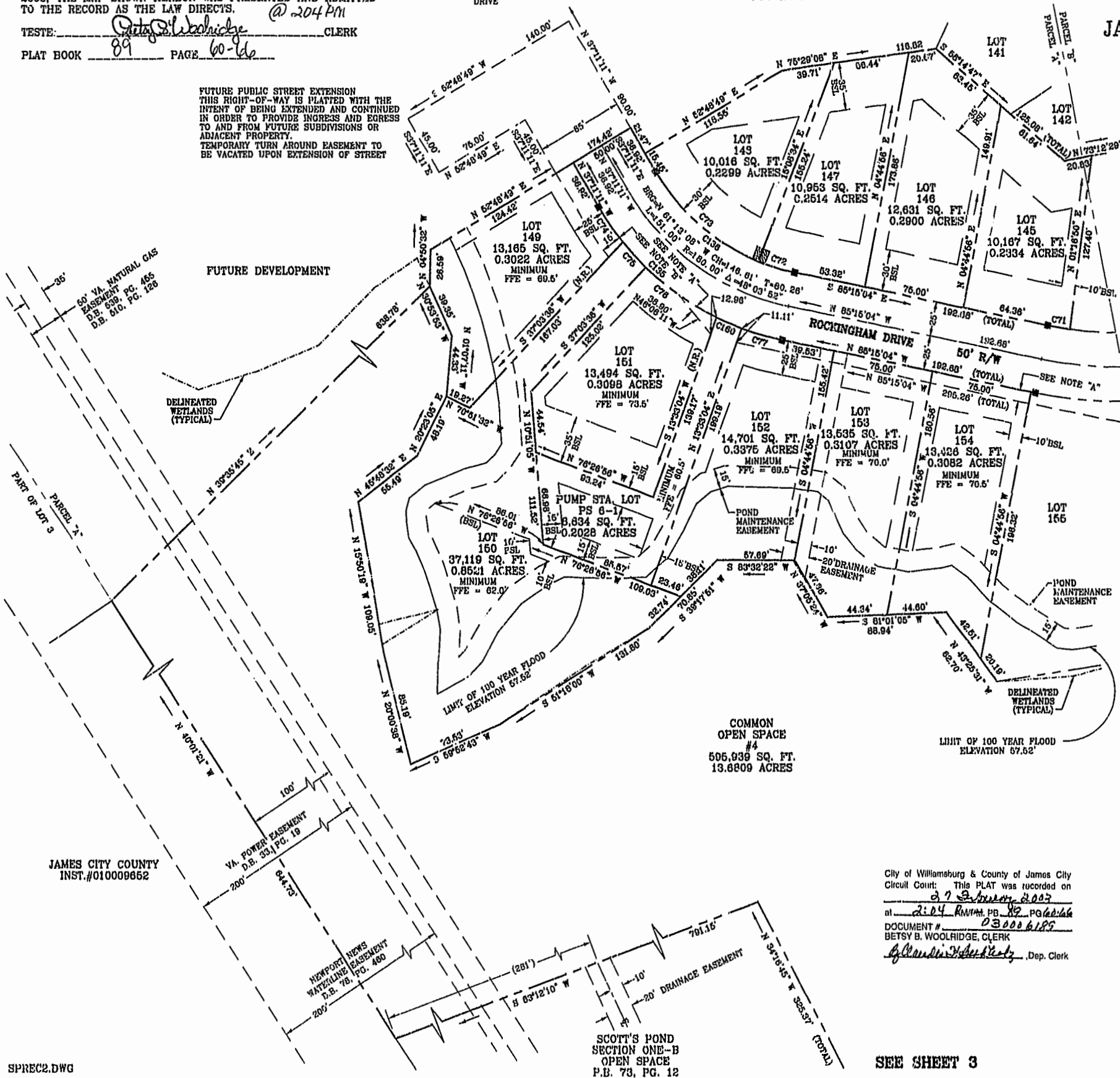
# SCOTT'S POND SECTION TWO POWHATAN DISTRICT JAMES CITY COUNTY, VIRGINIA

ADPA A.D. POTTS & ASSOCIATES, INC.  
11624 JEFFERSON AVENUE  
NEWPORT NEWS, VIRGINIA 23601  
PHONE: (757)-595-4610

SCALE: 1"=50' JULY 17, 2002  
SHEET 7 OF 7 REV: OCTOBER 14, 2002  
REV: DECEMBER 18, 2002



FUTURE PUBLIC STREET EXTENSION  
THIS RIGHT-OF-WAY IS PLATTED WITH THE  
INTENT OF BEING EXTENDED AND CONTINUED  
IN ORDER TO PROVIDE INGRESS AND EGRESS  
TO AND FROM FUTURE SUBDIVISIONS OR  
ADJACENT PROPERTY.  
TEMPORARY TURN AROUND EASEMENT TO  
BE VACATED UPON EXTENSION OF STREET



COMMON  
OPEN SPACE  
#4  
505,939 SQ. FT.  
13.6809 ACRES

LIMIT OF 100 YEAR FLOOD  
ELEVATION 67.62'

SEE SHEET 6

PROPERTY LINE  
HEREBY EXTINGUISHED

### LEGEND

- INDICATES CONCRETE MONUMENT
- INDICATES BUILDING SETBACK LINE
- INDICATES DRAINAGE EASEMENT
- INDICATES 10' x 10' J.C.S.A. UTILITY EASEMENT

City of Williamsburg & County of James City  
Circuit Court: This PLAT was recorded on  
27 February 2003  
at 2:04 PM, P.B. 89, P.G. 60-66  
DOCUMENT # 030006189  
BETSY B. WOOLRIDGE, CLERK  
Betsy B. Woolridge, Dep. Clerk

JAMES CITY COUNTY  
INST.#010009652

SCOTT'S POND  
SECTION ONE-B  
OPEN SPACE  
P.B. 73, PG. 12

SEE SHEET 3

JOB NO. 02-320 FILE NO. 10-1021

SPREC2.DWG