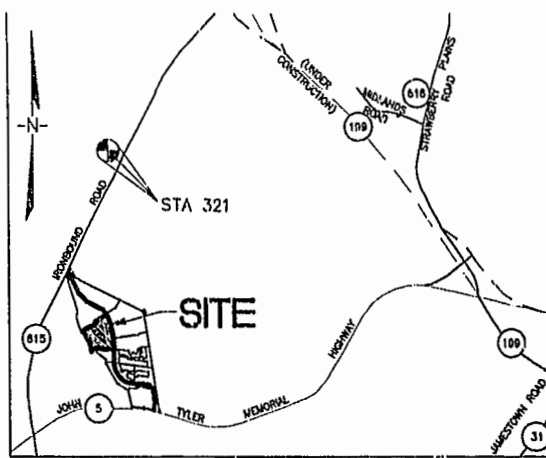
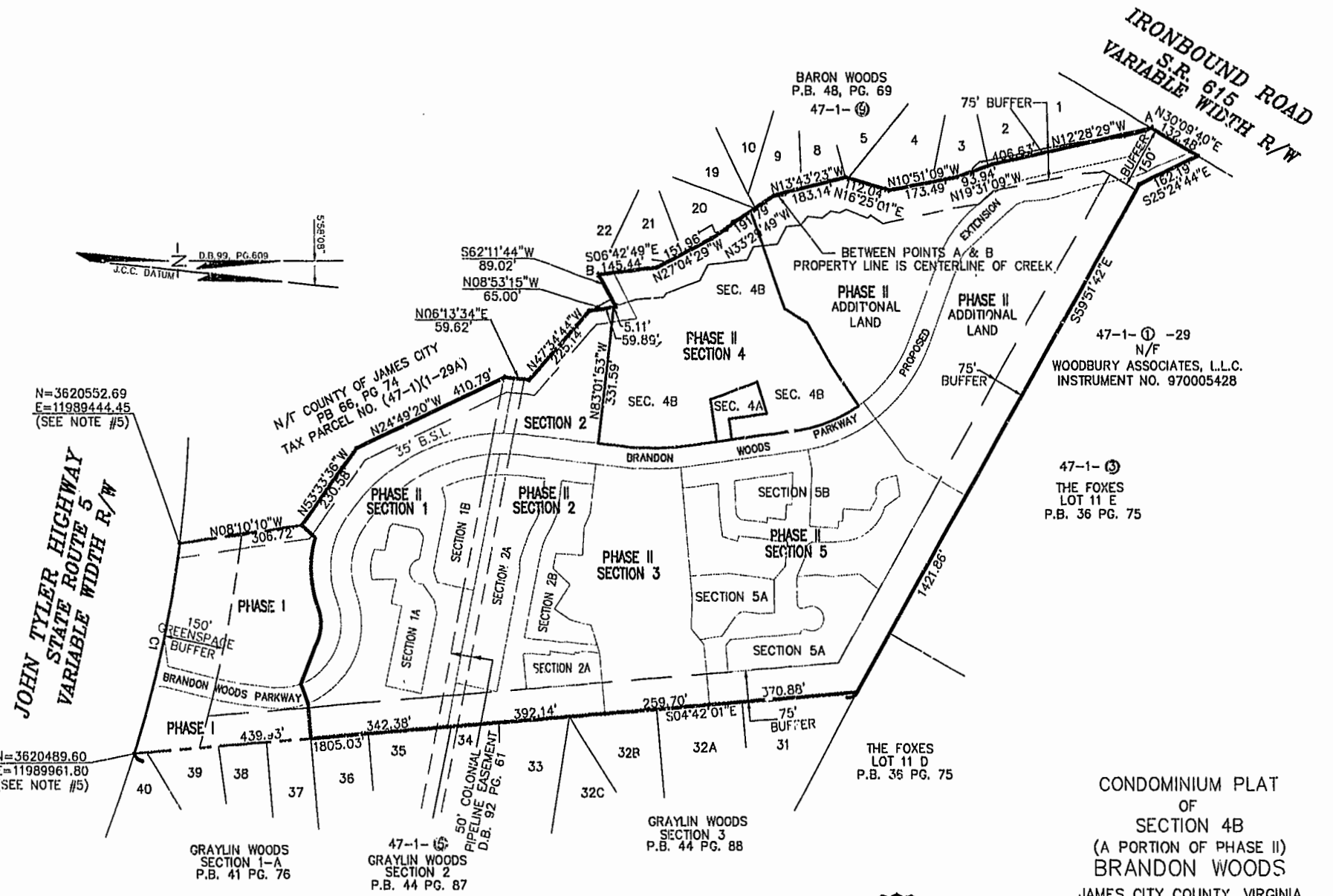
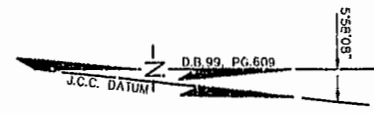


#030005384

89 PAGE 49



CURVE TABLE						
CURVE	LENGTH	RADIUS	TANGENT	CHORD BEARING	CHORD	DELTA
CI	521.88'	2904.79'	261.65'	N77°04'44"W	521.18'	10°17'38'



N=3620552.69  
E=11989444.45  
(SEE NOTE #5)

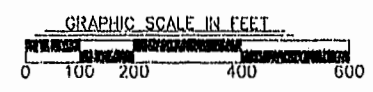
N=3620489.60  
E=11989961.80  
(SEE NOTE #5)

JOHN TYLER HIGHWAY  
STATE ROUTE 5  
VARIABLE WIDTH R/W

CONDOMINIUM PLAT  
OF  
SECTION 4B  
(A PORTION OF PHASE II)  
BRANDON WOODS  
JAMES CITY COUNTY, VIRGINIA  
SCALE: 1"=200' DATE: 2/7/03  
REVISED: 2/14/03  
SHEET 1 OF 4



City of Williamsburg & County of James City  
Circuit Court: This PLAT was recorded on  
20 February 2003  
at 10:09 AM P.M. P.B. 44 PG. 48-52  
DOCUMENT # 030005384  
OFFY B. WOOLRIDGE, CLERK  
*Offy B. Woolridge* Dep. Clerk



**LANDMARK**  
DESIGN GROUP  
Engineers • Planners • Surveyors  
Landscape Architects • Environmental Consultants  
4029 IRONBOUND ROAD SUITE 100  
WILLIAMSBURG, VA 23188  
TEL (757) 253-2975 FAX(757) 229-0049