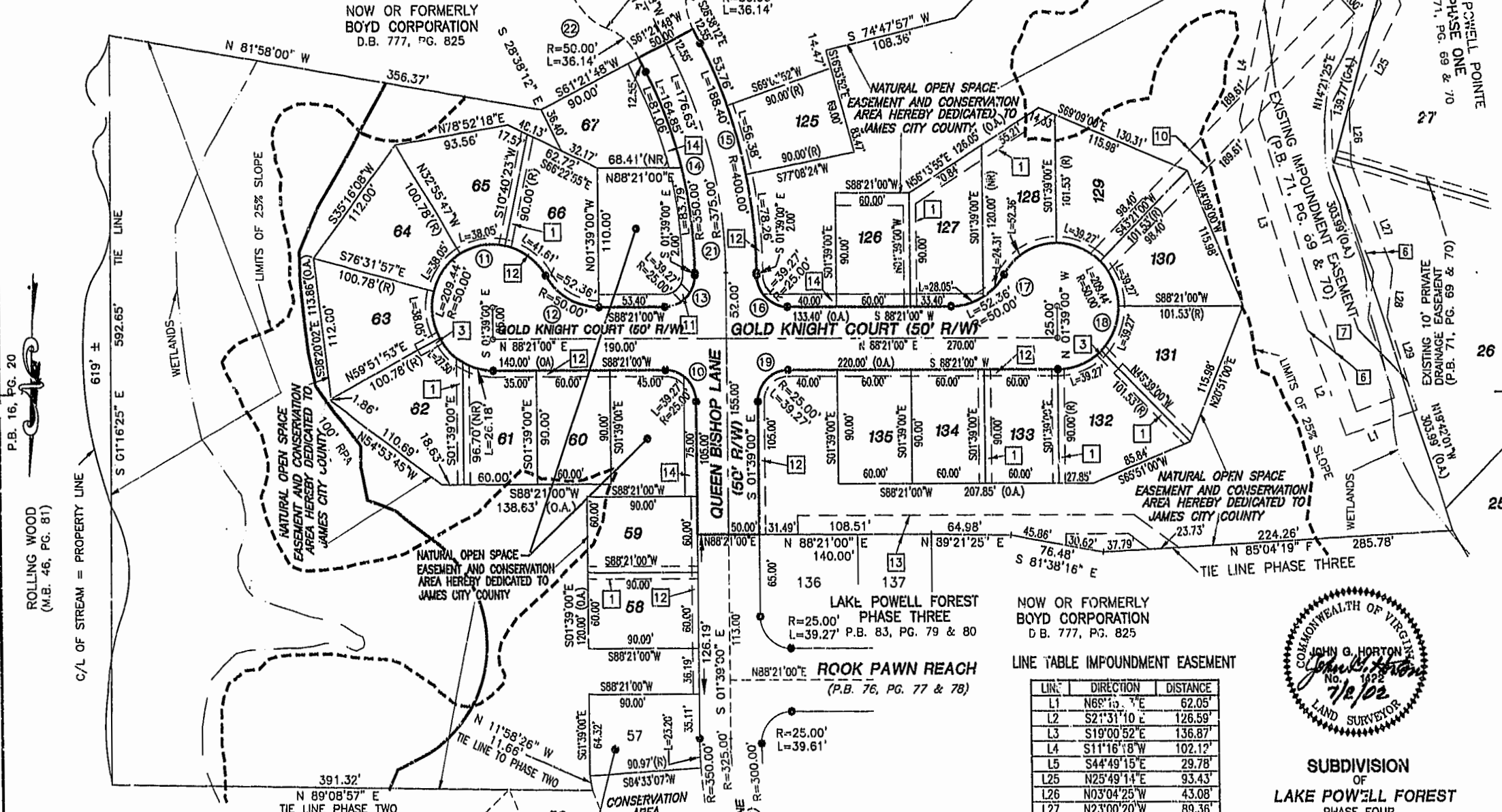


**EASEMENT NOTATIONS**

- 1 10' PRIVATE DRAINAGE EASEMENT
- 2 10' X 20' VIRGINIA POWER EASEMENT
- 6 EXISTING 15' MAINTENANCE EASEMENT (P.B. 71, PG. 69 & 70)
- 7 EXISTING IMPOUNDMENT EASEMENT (P.B. 71, PG. 69 & 70)
- 10 20' DRAINAGE EASEMENT HEREBY DEDICATED TO HOMEOWNERS ASSOCIATION
- 11 10' X 10' VIRGINIA POWER EASEMENT
- 12 5' UTILITY EASEMENT HEREBY DEDICATED EXCLUSIVELY TO JAMES CITY COUNTY SERVICE AUTHORITY
- 13 EXISTING 15' & VARIABLE UTILITY EASEMENT EXCLUSIVELY TO JAMES CITY COUNTY SERVICE AUTHORITY (P.B. 83, PG. 79 & 80)
- 14 10' UTILITY EASEMENT HEREBY DEDICATED EXCLUSIVELY TO JAMES CITY COUNTY SERVICE AUTHORITY "FUTURE PUBLIC STREET EXTENSION"
- 15 TEMPORARY CUL-DE-SAC IS TO BE VACATED UPON THE EXTENSION OF QUEEN BISHOP LANE. THIS RIGHT-OF-WAY IS PLATTED WITH THE INTENT OF BEING EXTENDED AND CONTINUED IN ORDER TO PROVIDE INGRESS AND EGRESS TO AND FROM FUTURE SUBDIVISIONS OR ADJACENT PROPERTY.



P.B. 16, PG. 20

ROLLING WOOD (M.B. 46, PG. 81)

City of Williamsburg & County of James City Circuit Court: This PLAT was recorded on 14 January 2003 at 10:04 AM in P.B. 89, PG. 14-16. DOCUMENT # 030001327 BETSY B. WOOLRIDGE, CLERK

*Betsy B. Woolridge* Clerk

W.O. ACAD.DWG\13361\SURVEY\PHASE4.DWG

LAKE POWELL FOREST PHASE TWO P.B. 76, PG. 77 & 78

LAKE POWELL FOREST PHASE THREE P.B. 83, PG. 79 & 80

NOW OR FORMERLY BOYD CORPORATION D.B. 777, PG. 825

**LINE TABLE IMPOUNDMENT EASEMENT**

LINE	DIRECTION	DISTANCE
L1	N68°19'7"E	62.05'
L2	S2°31'10"E	126.59'
L3	S19°00'52"E	136.87'
L4	S11°16'18"W	102.12'
L5	S44°49'15"E	29.78'
L25	N25°49'14"E	93.43'
L26	N03°04'25"W	43.08'
L27	N23°00'20"W	89.36'
L28	N05°25'40"E	38.29'
L29	N19°43'39"W	76.89'



**SUBDIVISION OF LAKE POWELL FOREST PHASE FOUR**  
 JAMESTOWN MAGISTERIAL DISTRICT  
 JAMES CITY COUNTY, VIRGINIA  
 SCALE: 1" = 60' DEC. 3, 2001



**HORTON & DOUD, P.C.**  
 SURVEYORS, ENGINEERS & PLANNERS  
 300 GEORGE WASHINGTON HIGHWAY N.  
 CHESAPEAKE VIRGINIA 23323  
 (757) 487-4535



REVISED: JULY 2, 2002  
 SHEET 3 OF 3