

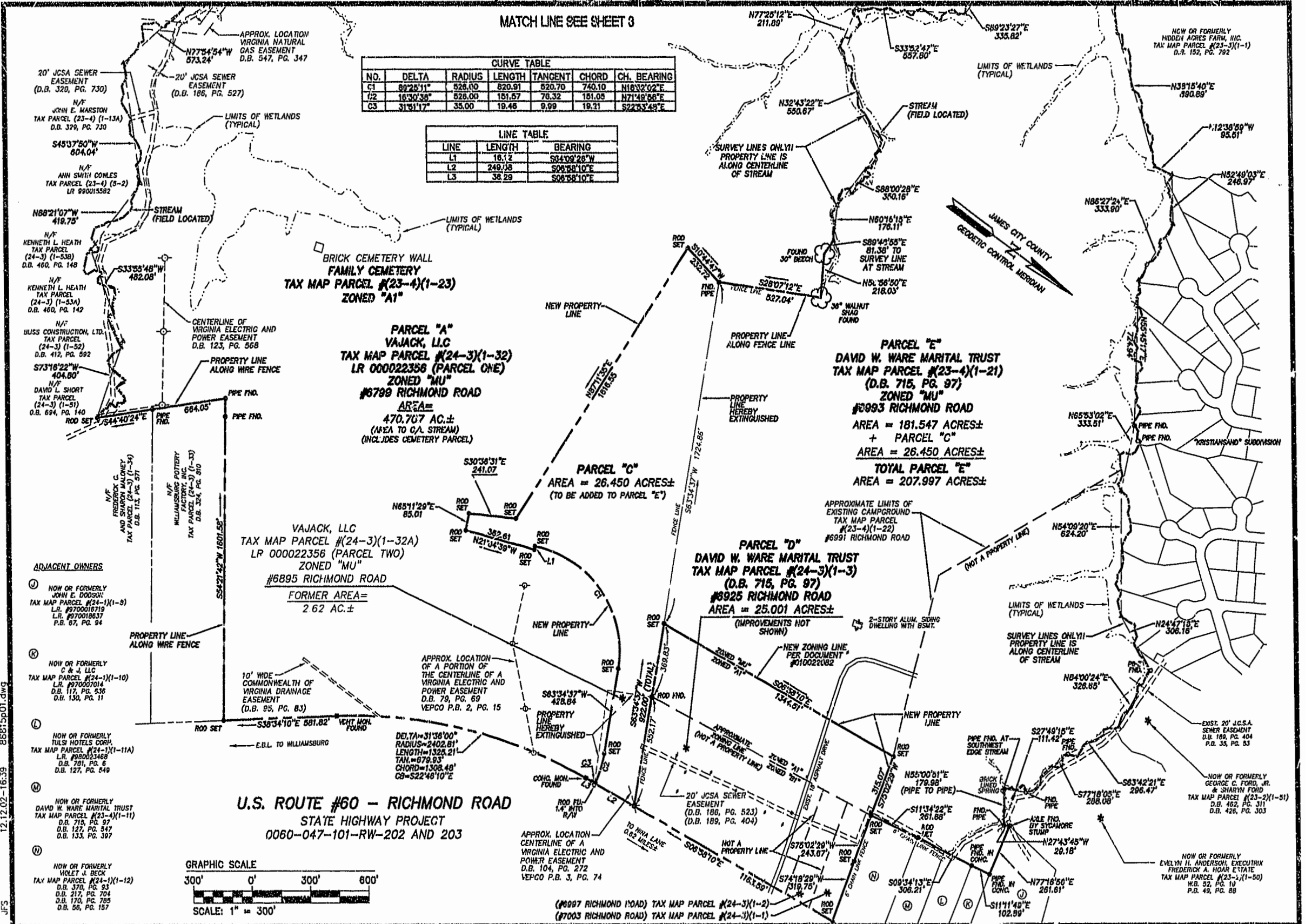
#030000329

89 page 11

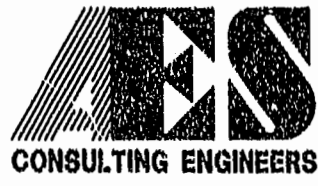
MATCH LINE SEE SHEET 3

CURVE TABLE						
NO.	DELTA	RADIUS	LENGTH	TANGENT	CHORD	CH. BEARING
C1	89°25'11"	526.00	820.91	820.70	740.10	N18°32'02"E
1/2	18°30'38"	526.00	151.57	76.32	151.05	N71°48'58"E
C3	31°31'17"	35.00	19.46	9.09	19.21	S22°33'49"E

LINE TABLE		
LINE	LENGTH	BEARING
L1	18.12	S04°08'28"W
L2	249.38	S08°58'10"E
L3	38.29	S08°58'10"E



88815p01.dwg
12.12.02-16:39
JFS



5248 Olde Towne Road, Suite 1
Williamsburg, Virginia 23188
(757) 253-0040
Fax (757) 220-8994

PLAT OF SUBDIVISION AND BOUNDARY LINE ADJUSTMENT BETWEEN THE PROPERTIES OWNED BY THE MASSIE CORPORATION, VAJACK, L.L.C., AND DAVID W. WARE MARITAL TRUST

STONEHOUSE DISTRICT JAMES CITY COUNTY VIRGINIA



City of Williamsburg & County of James City Circuit Court: This PLAT was recorded on			
12/12/02	10 January 2007	at 3:42 AM/PM	PG. 10/12
DOCUMENT # 23000329			
BY GUY S. WOODRIDGE, CLERK			
GUY S. WOODRIDGE, Dep. Clerk			
No.	DATE	REVISION / COMMENT / NOTE	BY
1	12/12/02	REVISED PER COUNTY COMMENTS	JFS

Designed	AES	Drawn	JFS
Scale	1"=300'	Date	10/24/02
Project No.	8881-05		
Drawing No.	2 OF 3		