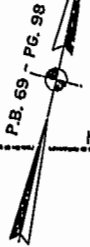


JAMES CITY COUNTY TP 33-3-01-27  
NOW OR FORMERLY  
ARTCRAFT - STRATFORD, L.C.  
D.B. 649 P. 470

JAMES CITY COUNTY TP 33-3-01-28  
NOW OR FORMERLY  
GARY E. & CATHY L. NESTER  
D.D.509 P. 735

JAMES CITY COUNTY TP 33-3-01-29  
NOW OR FORMERLY  
GARY E. & CATHY L. NESTER  
D.B.619 P.683

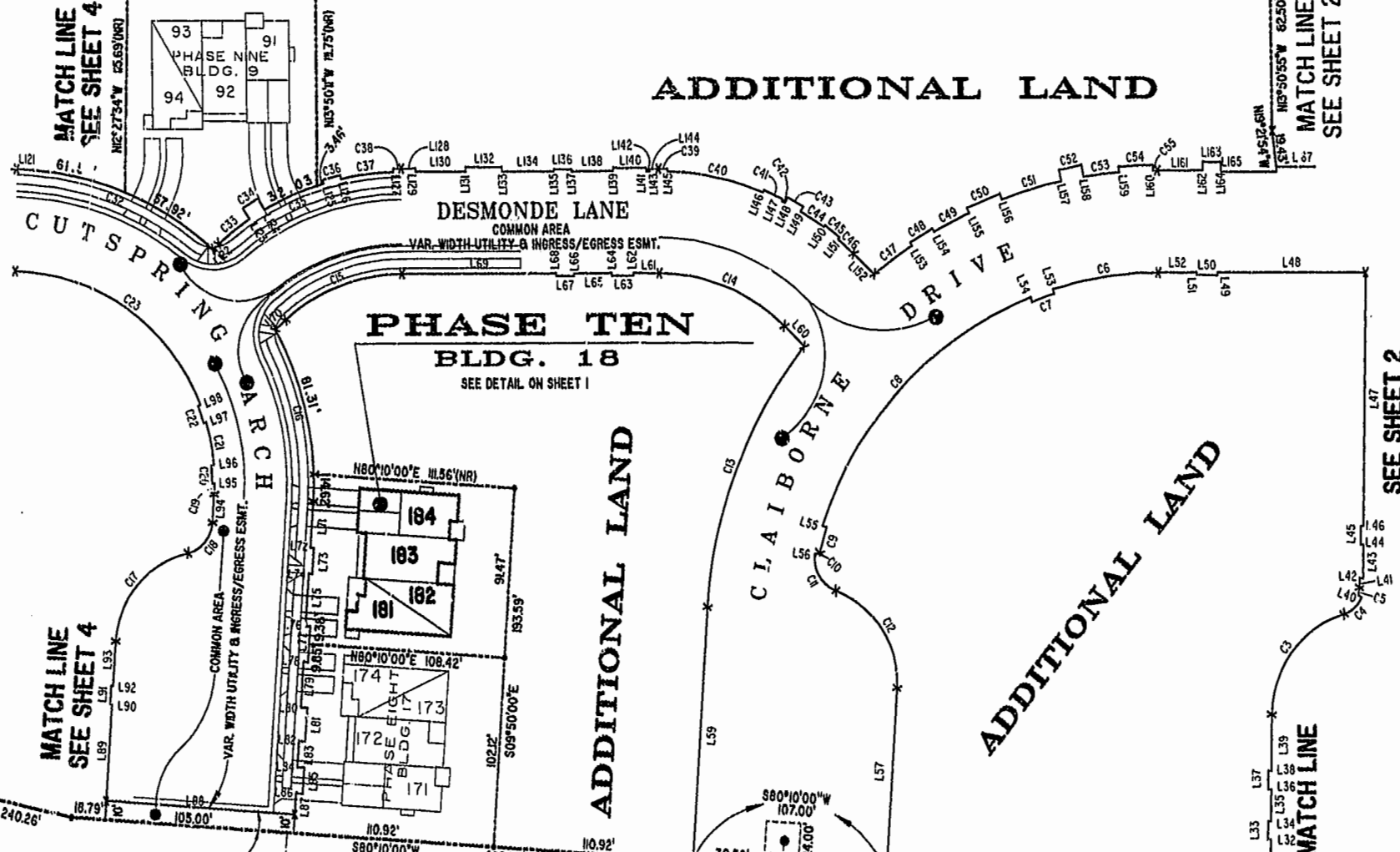


N77°32'26"E 479.30' PIPE(E)  
N76°09'49"E 276.18' 191.72'  
N76°09'08"E 199.90' PIPE(E)  
N76°09'08"E 322.06' 138.59' 183.47' PIPE(E)

MATCH LINE  
SEE SHEET 4

MATCH LINE  
SEE SHEET 2

ADDITIONAL LAND



MATCH LINE  
SEE SHEET 4

SEE SHEET 2  
RAVEN TERRACE

ADDITIONAL LAND

MATCH LINE  
SEE SHEET 2

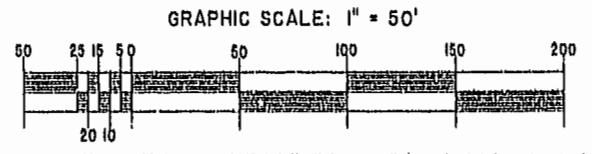
TP 281-10-00-B  
NOW OR FORMERLY  
752 L.L.C.  
INST. #980305

TP 282-08-00-001  
NOW OR FORMERLY  
752 L.L.C.  
INST. #980305

TP 281-10-00-B  
NOW OR FORMERLY  
752 L.L.C.  
INST. #980305

TP 282-08-00-001  
NOW OR FORMERLY  
752 L.L.C.  
INST. #980305

EXHIBIT "A"  
CLAIBORNE  
(A CONDOMINIUM COMMUNITY)  
PHASE TEN



City of Williamsburg & County of James City  
Circuit Court: This PLAT was recorded on  
10 Dec 2002  
at 11:16 AM/P.M. PB 88 PG 284  
DOCUMENT # 022234  
RETSY B. WOOLRIDGE, CLERK  
*Retsy B. Woolridge* Clerk



Hassell & Folkes, P.C.		SCALE: 1" = 50'	DATE: 11/10/02	SHEET 3 of 5
Engineers Surveyors Planners	CONTRACT NO. C	FILE NAME	REV.	
Chesapeake, VA. 23320		\\PLATS\CL\ANGORNE\PH-10-B\100-10.DWG		
(757)547-9531				

A-1520

A-1520