

JAMES CITY COUNTY TP 33-3-01-29
NOW OR FORMERLY
GARY E. & CATHY L. NESTER
D.B.619 P.683

JAMES CITY COUNTY TP 33-3-01-24
NOW OR FORMERLY
GOLDEN KNIGHTS, INC.
D.B.568 P.316

MATCH LINE
SEE SHEET 3

ADDITIONAL LAND

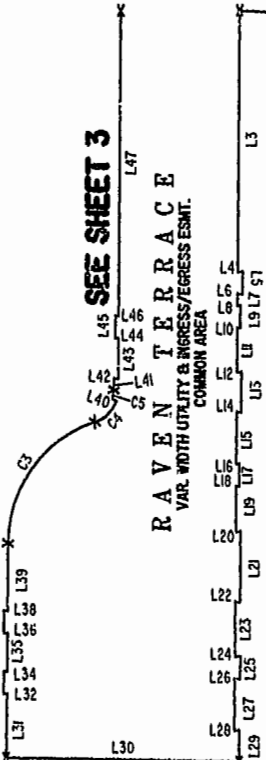


MATCH LINE

SEE SHEET 3

RAVEN TERRACE

VAR. WIDTH UTILITY & INGRESS/EGRESS ESMT.
COMMON AREA



ADDITIONAL LAND

BENT PINEY

TP 282-04-00-001
NOW OR FORMERLY
CHELSEA GCA REALTY PARTNERSHIP, L.P.
D.B.106 P.407

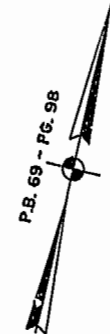
TP 252-01-00-010
TP 252-01-00-009
NOW OR FORMERLY
MARK II INVESTMENTS LTD.
D.B.130 P.671

CLAIBORNE DRIVE

VAR. WIDTH UTILITY & INGRESS/EGRESS ESMT.
COMMON AREA

TP 282-05-00-001
NOW OR FORMERLY
CHELSEA GCA REALTY PARTNERSHIP, L.P.
D.B.113 P.693

DETAIL
N.T.S.

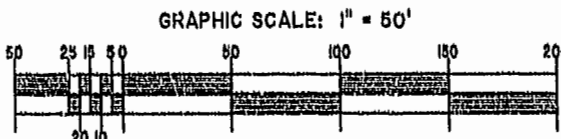


U.S. RTE. 60
RICHMOND ROAD
P.B. 69 - P.6.98

City of Williamsburg & County of James City
Circuit Court: This PLAT was recorded on
22 Jul 2002
at 3:44 AM/PM, P.B. 88 PG 49-53
DOCUMENT # 022131
BETSY B. WOOLRIDGE, CLERK
Betsy Woolridge Dep. Clerk

EXHIBIT "A" CLAIBORNE (A CONDOMINIUM COMMUNITY) PHASE EIGHT

CITY OF WILLIAMSBURG, VIRGINIA



| | | | | |
|--|-----------|------------------------|-----------------------------|------------------|
| Hassell & Polkes, P.C. Engineers Surveyors Planners Chesapeake, VA 23320 (757) 547-9531 | SIZE C | CONTRACT NO 114G/16 | DISK/BOX PH-0-BLDD-17DWO | FILENAME REV. |
| SCALE: 1" = 50' | | DATE: 10/28/02 | | SHEET 2 of 8 |