

JAMES CITY COUNTY TP 33-3-01-27  
NOW OR FORMERLY  
ARTCRAFT - STRATFORD, L.C.  
D.B. 649 P. 470

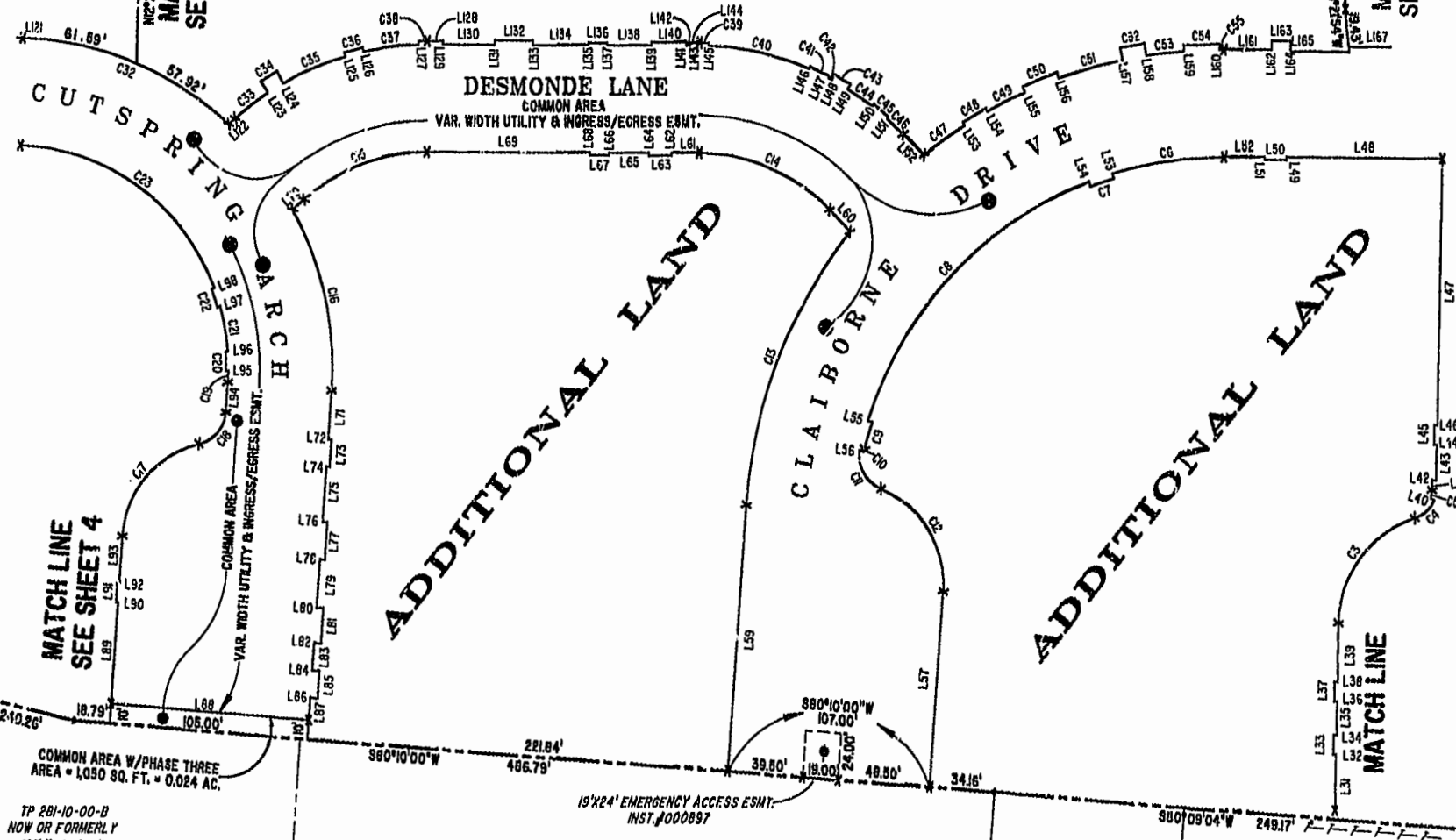
JAMES CITY COUNTY TP 33-3-01-28  
NOW OR FORMERLY  
GARY E. & CATHY L. NESTER  
D.B. 509 P. 735

JAMES CITY COUNTY TP 33-3-01-29  
NOW OR FORMERLY  
GARY E. & CATHY L. NESTER  
D.B. 619 P. 683

ADDITIONAL LAND

ADDITIONAL LAND

ADDITIONAL LAND



MATCH LINE  
SEE SHEET 4

MATCH LINE  
SEE SHEET 4

MATCH LINE  
SEE SHEET 2

MATCH LINE  
SEE SHEET 2

MATCH LINE

COMMON AREA W/PHASE THREE  
AREA = 1090 SQ. FT. = 0.024 AC.

TP 281-10-00-B  
NOW OR FORMERLY  
752 L.L.C.  
INST. #980305

TP 282-08-00-001  
NOW OR FORMERLY  
752 L.L.C.  
INST. #980305

TP 281-10-00-B  
NOW OR FORMERLY  
752 L.L.C.  
INST. #980305

TP 282-08-00-001  
NOW OR FORMERLY  
752 L.L.C.  
INST. #980305

19'x24' EMERGENCY ACCESS ESMT.  
INST. #000897

GRAPHIC SCALE: 1" = 50'



City of Williamsburg & County of James City  
Circuit Court: This PLAT was recorded on  
September 17, 2002  
at 8:27 AM/PM, PB 87, PG 75-77  
DOCUMENT # 021689  
BETSY B. WOODRIDGE, CLERK  
*C. Stewart*, Dep. Clerk

EXHIBIT "A"  
CLAIBORNE  
(A CONDOMINIUM COMMUNITY)  
PHASE SIX

CITY OF WILLIAMSBURG, VIRGINIA

Hassell & Folkes, P.C. Engineers Surveyors Planners Chesapeake, VA 23320 (757) 547-9531	SIZE C	CONTRACT NO H40/18	FILENAME -8-8L06-10V8	REV.
SCALE: 1" = 80'	DATE: 08/21/02	SHEET 3 of 8		