

#021580

87 PAGE 52

EXHIBIT B-13  
SUPPLEMENTAL CONDOMINIUM PLAN  
OF  
WYNDHAM PLANTATION  
CONDOMINIUM

WILLIAMSBURG, VIRGINIA  
SCALE: 1"=10' AUGUST 14, 2002

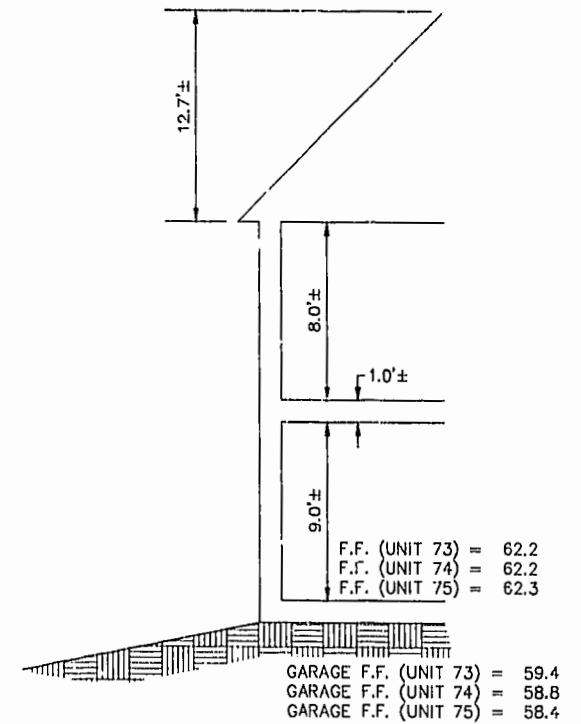
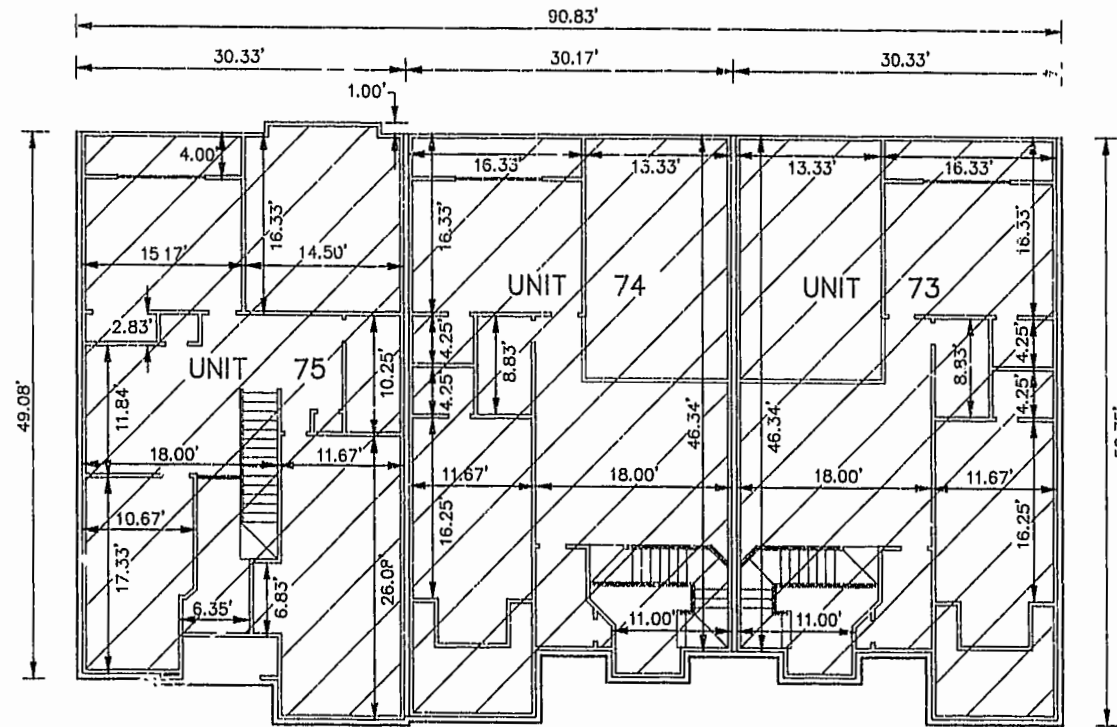
JOHN E. SIRINE AND ASSOCIATES, LTD.  
SURVEYORS • ENGINEERS • PLANNERS  
VIRGINIA BEACH, VIRGINIA  
(757) 486-4910

NOTES:

1. BUILDING DIMENSIONS SHOWN HEREON ARE INTERIOR DIMENSIONS. THESE DIMENSIONS ARE IN FEET AND WERE TAKEN FROM PLANS SUPPLIED ENTITLED "WYNDHAM PLANTATION AT WILLIAMSBURG, FLOOR PLANS" BY PROGRESSIVE DESIGNS DATED 11/19/98.
2. INTERIOR UNIT CONFIGURATIONS AND PARTITIONS AS DEPICTED HEREON ARE FOR THE PURPOSE OF ILLUSTRATION ONLY AND MAY NOT REPRESENT THE INTERIOR OF A UNIT AS ACTUALLY CONSTRUCTED.

SECOND FLOOR - BUILDING 10

SCALE: 1"=10'



SCALE: 1"=5'

UNIT AREA

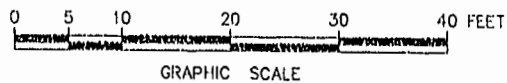
PHASE	UNIT No.	UNIT ADDRESS	UNIT AREA
14	73	272 ZELKOVA ROAD	2,101 S.F.
14	74	276 ZELKOVA ROAD	1,957 S.F.
14	75	280 ZELKOVA ROAD	2,141 S.F.

THE UNDERSIGNED CERTIFIES THAT THESE PLANS ARE ACCURATE AND COMPLY WITH THE PROVISIONS OF CODE OF VIRGINIA, SECTION 55-79.58.B AND THAT ALL UNITS OR PORTIONS THEREOF DEPICTED HEREON AND ALL COMMON ELEMENTS HAVE BEEN SUBSTANTIALLY COMPLETED.

SIGNED: Jeffrey D. Williams  
JEFFREY D. WILLIAMS, L.S.



City of Williamsburg & County of James City  
Circuit Court: This PLAT was recorded on  
29 Aug 2002  
at 8:55 AM/PTB 87 PG 49-54  
DOCUMENT # 22,1580  
RETSY B. WOOLRIDGE, CLERK  
Cathy S. Woolridge Dep. Clerk



GRAPHIC SCALE