

JAMES CITY COUNTY TP 33-3-01-27  
NOW OR FORMERLY  
ARTCRAFT - STRATFORD, L.C.  
D.B. 649 P. 470

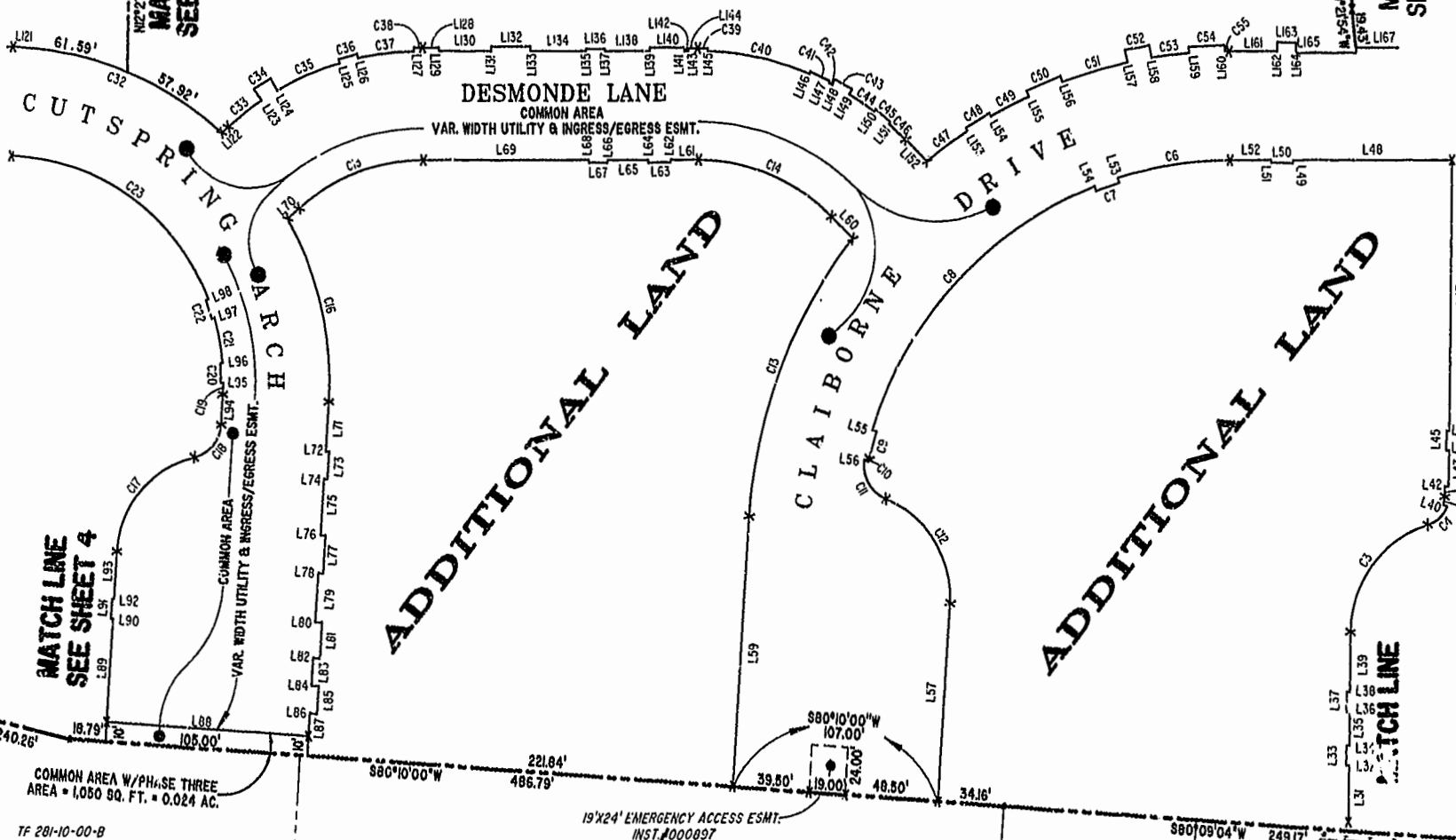
JAMES CITY COUNTY TP 33-3-01-28  
NOW OR FORMERLY  
GARY E. & CATHY L. NESTER  
D.B. 509 P. 735

JAMES CITY COUNTY TP 33-3-01-29  
NOW OR FORMERLY  
GARY E. & CATHY L. NESTER  
D.B. 619 P. 603

ADDITIONAL LAND

ADDITIONAL LAND

ADDITIONAL LAND



MATCH LINE  
SEE SHEET 4

MATCH LINE  
SEE SHEET 4

MATCH LINE  
SEE SHEET 2

SEE SHEET 2  
RAVEN TERRACE

COMMON AREA W/PHASE THREE  
AREA = 1,050 SQ. FT. = 0.024 AC.

TP 281-10-00-B  
NOW OR FORMERLY  
752 L.L.C.  
INST. #980305

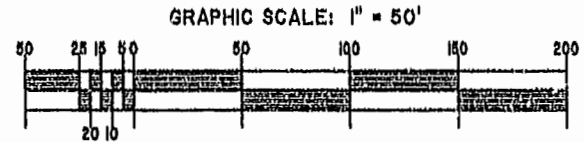
TP 282-08-00-001  
NOW OR FORMERLY  
752 L.L.C.  
INST. #980305

TP 281-10-00-B  
NOW OR FORMERLY  
752 L.L.C.  
INST. #980305

TP 282-08-00-001  
NOW OR FORMERLY  
752 L.L.C.  
INST. #980305

City of Williamsburg & County of James City  
Circuit Court: This PLAT was recorded on  
August 19, 2002  
at 1:35 AM (PM) PB 87 PG 34-38  
DOCUMENT # 051492  
BETSY B. WOOLRIDGE, CLERK  
C. Kevin Felt, Dep. Clerk

EXHIBIT "A"  
CLAIBORNE  
(A CONDOMINIUM COMMUNITY)  
PHASE FOUR



Hassel & Polkes, P.C. Engineers Surveyors Planners Chesapeake, VA 23320 (757) 547-9531	SCALE: 1" = 50'	DATE: 08/07/02	SHEET 3 of 5
---	-----------------	----------------	--------------