

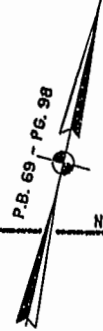
#021491

87 PAGE 31

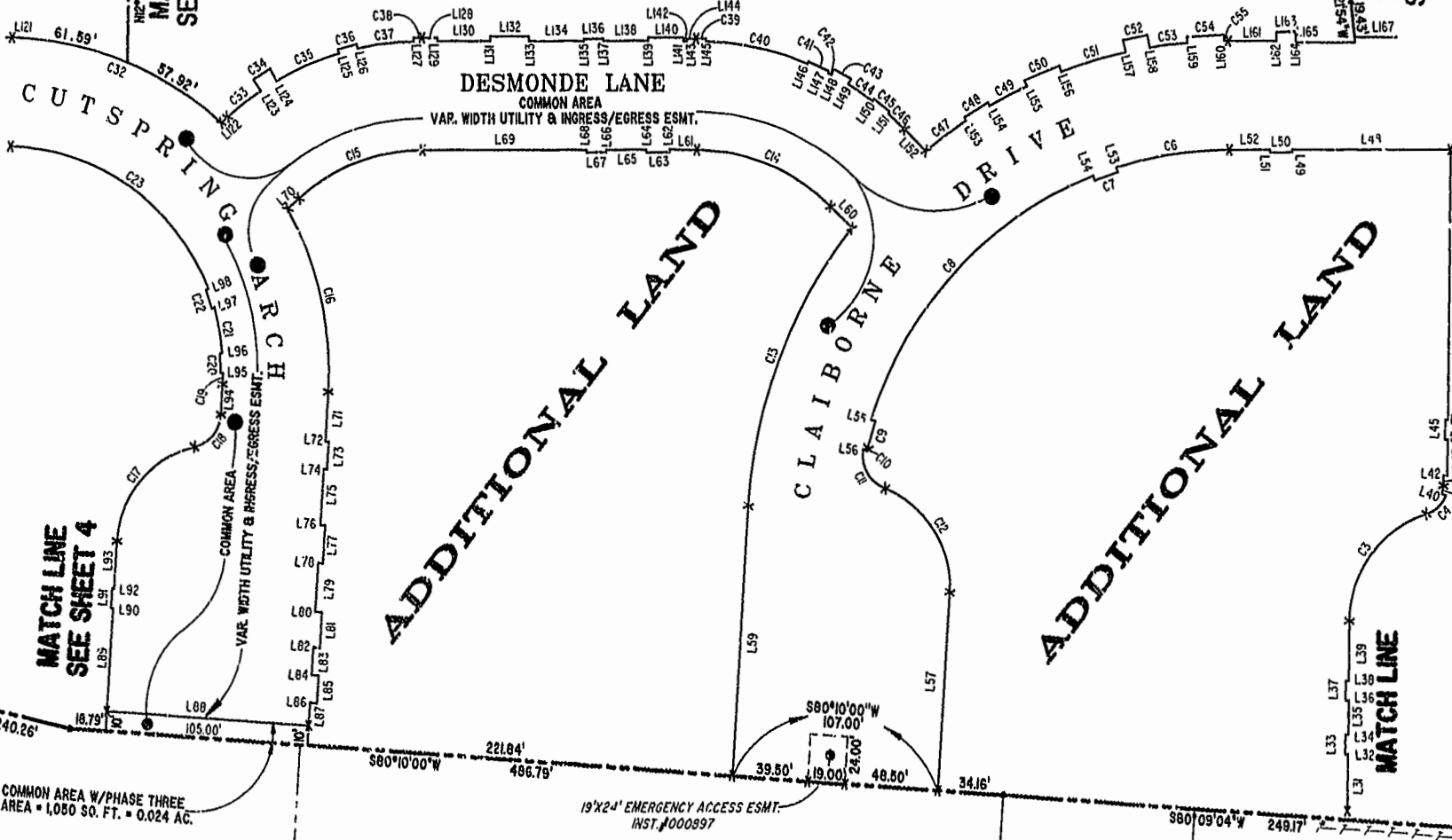
JAMES CITY COUNTY TP 33-3-01-27  
NOW OR FORMERLY  
ARTCRAFT - STRATFORD, L.C.  
D.B. 649 P. 470

JAMES CITY COUNTY TP 33-3-01-28  
NOW OR FORMERLY  
GARY E. & CATHY L. NESTER  
D.B. 509 P. 735

JAMES CITY COUNTY TP 33-3-01-29  
NOW OR FORMERLY  
GARY E. & CATHY L. NESTER  
D.B. 619 P. 683



ADDITIONAL LAND



COMMON AREA W/PHASE THREE  
AREA = 1,080 SQ. FT. = 0.024 AC.

TP 281-10-00-B  
NOW OR FORMERLY  
752 L.L.C.  
INST. #980305

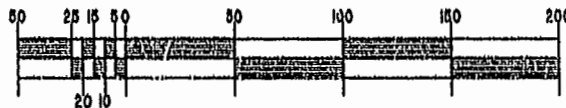
TP 282-08-00-001  
NOW OR FORMERLY  
752 L.L.C.  
INST. #980305

TP 281-10-00-B  
NOW OR FORMERLY  
752 L.L.C.  
INST. #980305

TP 282-08-00-001  
NOW OR FORMERLY  
752 L.L.C.  
INST. #980305

19'X24' EMERGENCY ACCESS ESMT.  
INST. #000897

GRAPHIC SCALE: 1" = 50'



City of Williamsburg County of James City  
Circuit Court: This PLAT was recorded on  
August 19, 2002  
at 1:24 AM/PM PB87 PG 22.33  
DOCUMENT # 021491  
BETSY B. WOOLRIDGE, CLERK  
C. Scott Fell, Dep. Clerk

EXHIBIT "A"  
CLAIBORNE  
(A CONDOMINIUM COMMUNITY)  
PHASE THREE

CITY OF WILLIAMSBURG, VIRGINIA			
Hassell & Folkes, P.C. Engineers Surveyors Planners Chesapeake, VA 23320 (757) 547-9531	SIZE c	CONTRACT NO 114D/16	FILENAME PH-3-BLDG-16.DWG
SCALE: 1" = 50'	DATE: 08/07/02	REV.	
		SHEET 3 of 8	

A-1520

A-1520