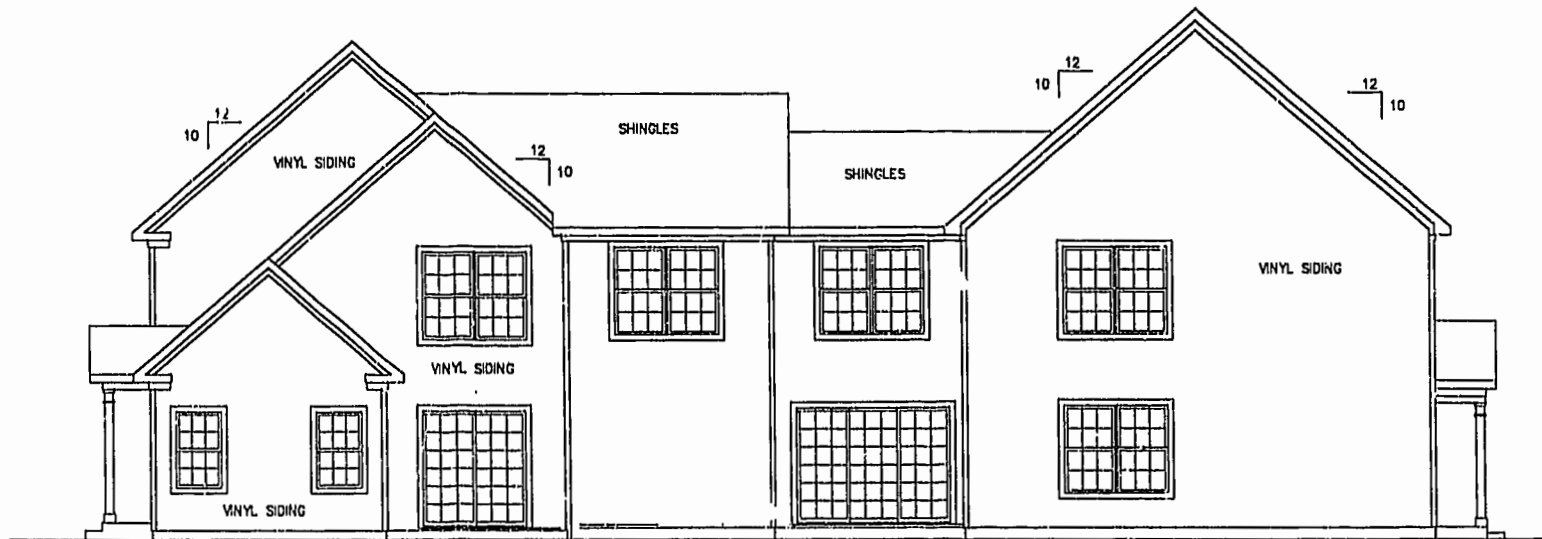




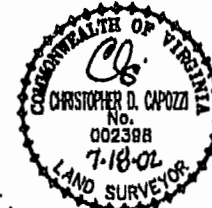
RIGHT ELEVATION  
NOT TO SCALE



REAR ELEVATION  
NOT TO SCALE

City of Williamsburg & County of James City  
 Circuit Court: This PLAT was recorded on  
 at 10:27 AM/PM, PG. 86, PG 96-101  
 DOCUMENT # 021288  
 BETSY B. WOOLRIDGE, CLERK  
*Betsy Woolridge*, Dep. Clerk

EXHIBIT "A"  
**CLAIBORNE**  
 (A CONDOMINIUM COMMUNITY)  
 PHASE TWO



NOTE: ARCHITECTURAL PLANS PREPARED BY BEN ADDERHOLDT - ARCHITECT.

Hassell & Polkes, P.C. Engineers Surveyors Planners Chesapeake, VA 23320 (757) 547-9531	SIZE C	CONTRACT NO 114C/16	DISK/BOX 114C/16	FILENAME PH-2-BL00-19.DWG	REV.
SCALE: AS SHOWN		DATE: 07/18/02		SHEET 7 of 12	

A-1520

A-1520