

#02/285

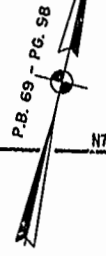
86 PAGE 82

JAMES CITY COUNTY TP 33-3-01-27
NOW OR FORMERLY
ARTCRAFT - STRATFORD, L.C.
D.B. 649 P. 470

JAMES CITY COUNTY TP 33-3-01-28
NOW OR FORMERLY
GARY E. & CATHY L. NESTER
D.B. 509 P. 735

JAMES CITY COUNTY TP 33-3-01-29
NOW OR FORMERLY
GARY E. & CATHY L. NESTER
D.B. 619 P. 683

JAMES CITY COUNTY
TP 33-3-01-24
NOW OR FORMERLY
GOLDEN KNIGHTS, INC.
D.B. 568 P. 316

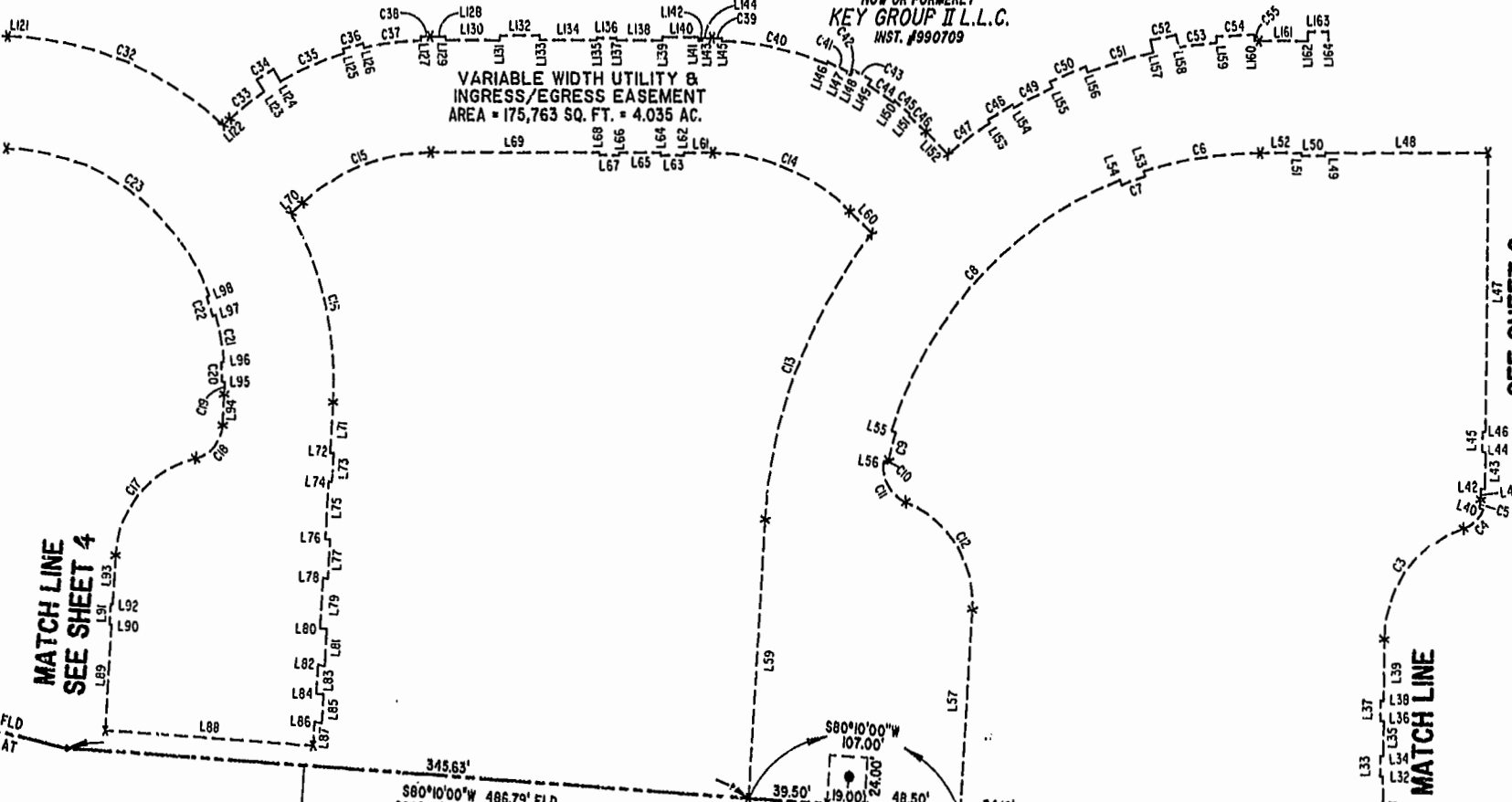


N77°32'26"E 479.30' P.P.E.F.T. N76°09'49"E 276.18' P.P.E.F.T. N76°08'06"E 199.90' P.P.E.F.T. N76°09'08"E 322.08' P.P.E.F.T. N76°06'26"E 179.99'

LOT 6-A
AREA = 644,256 SQ. FT.
= 14.790 AC.

PART I
TP 281-0A-00-001
NOW OR FORMERLY
KEY GROUP II L.L.C.
INST. #990709

VARIABLE WIDTH UTILITY & INGRESS/EGRESS EASEMENT
AREA = 175,763 SQ. FT. = 4.035 AC.



MATCH LINE
SEE SHEET 4

SEE SHEET 2

MATCH LINE

City of Williamsburg & County of James City
Circuit Court: This PLAT was recorded on
22 July 2002
at 2:18 AM/PM, PB. 86 PG. 8084
DOCUMENT # 02/285
BETSY B. WOOLRIDGE, CLERK
B. Woolridge, Dep. Clerk

S89°22'17"W 240.26' FLD
S89°21'22"W 240.27' PLAT

345.63'
S80°10'00"W 486.79' FLD
S80°09'05"W 486.83' PLAT

19'x24' EMERGENCY ACCESS ESMT.
INST. #000897

S80°10'00"W 107.00'
S80°09'04"W 249.17' FLD
S90°08'09"W 249.18' PLAT

S80°09'04"W 249.17' FLD
S90°08'09"W 249.18' PLAT

S77°14'03"W 150.89' FLD
S77°13'08"W 150.03' PLAT

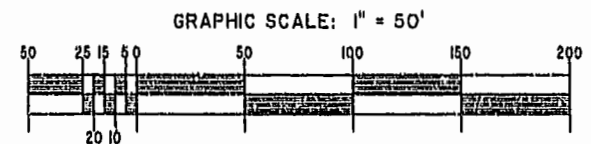
TP 281-10-00-0
NOW OR FORMERLY
752 L.L.C.
INST. #980305

TP 282-08-00-001
NOW OR FORMERLY
752 L.L.C.
INST. #980305

TP 281-10-00-0
NOW OR FORMERLY
752 L.L.C.
INST. #980305

TP 282-08-00-001
NOW OR FORMERLY
752 L.L.C.
INST. #980305

STATE OF VIRGINIA,
CITY OF WILLIAMSBURG:
IN THE CLERK'S OFFICE OF THE CIRCUIT COURT FOR THE CITY
OF WILLIAMSBURG THIS 22 DAY OF July, 2002, THIS
MAP WAS PRESENTED AND ADMITTED TO RECORD AS THE LAW DIRECTS
PLAT BOOK 86 PAGE 80-84 @ 9:18 AM
TESTE: *B. Woolridge* CLERK
B. Woolridge CLERK



RESUBDIVISION OF PROPERTY OF
KEY GROUP II L.L.C.
T.P. 281-0A-00-001, T.P. 252-01-00-006,
AND T.P. 252-01-00-007
REF. P.B. 69 - PG. 98
CITY OF WILLIAMSBURG, VIRGINIA

Hassell & Folkes, P.C. Engineers, Surveyors, Planners Chesapeake, VA, 23320 (757) 547-9531	SIZE C	CONTRACT NO	DISK/BOX 14/16	FILENAME CLAIBORNE-RESUB	REV.
SCALE: 1" = 50'	DATE: 02/11/02	SHEET 3 of 5			

A-1520