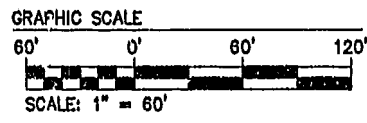
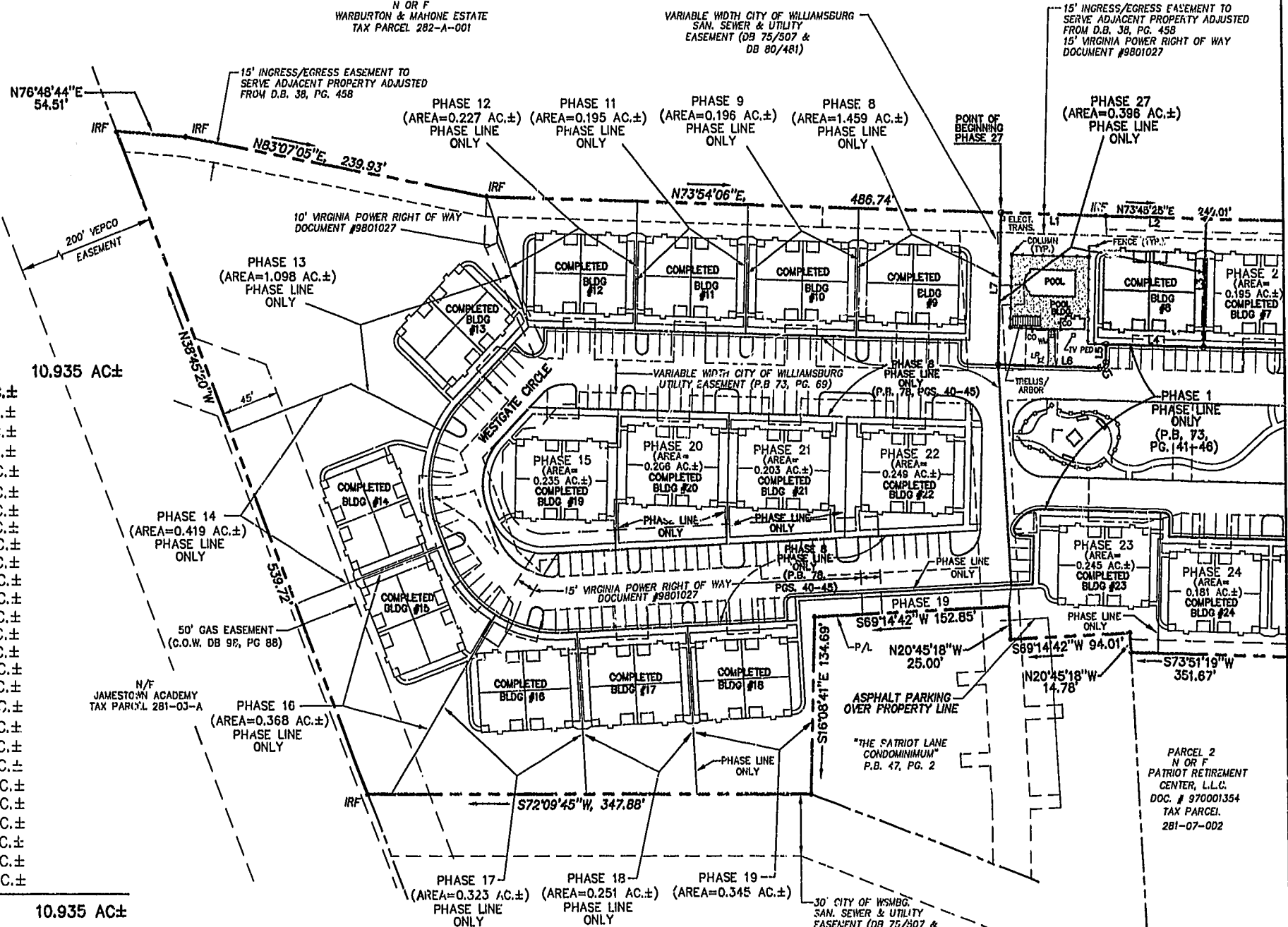


AREA

TOTAL AREA PARCEL 1= 10.935 AC±

PHASE TWENTY-SEVEN=	0.396 AC.±
PHASE TWENTY-SIX=	0.177 AC.±
PHASE TWENTY-FIVE=	0.178 AC.±
PHASE TWENTY-FOUR=	0.181 AC.±
PHASE TWENTY-THREE=	0.245 AC.±
PHASE TWENTY-TWO=	0.249 AC.±
PHASE TWENTY-ONE=	0.203 AC.±
PHASE TWENTY=	0.206 AC.±
PHASE NINETEEN=	0.345 AC.±
PHASE EIGHTEEN=	0.251 AC.±
PHASE SEVENTEEN=	0.323 AC.±
PHASE SIXTEEN=	0.368 AC.±
PHASE FIFTEEN=	0.235 AC.±
PHASE FOURTEEN=	0.419 AC.±
PHASE THIRTEEN=	1.098 AC.±
PHASE TWELVE=	0.227 AC.±
PHASE ELEVEN=	0.195 AC.±
PHASE TEN=	0.222 AC.±
PHASE NINE=	0.196 AC.±
PHASE EIGHT=	1.459 AC.±
PHASE SEVEN=	0.216 AC.±
PHASE SIX=	0.343 AC.±
PHASE FIVE=	0.235 AC.±
PHASE FOUR=	0.200 AC.±
PHASE THREE=	0.196 AC.±
PHASE TWO=	0.195 AC.±
PHASE ONE=	2.377 AC.±
TOTAL=	10.935 AC±



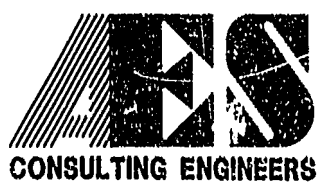
CURVE TABLE PHASE 27

NUMBER	DELTA	RADIUS	LENGTH	TANGENT	CHORD	CH. BEAR
C1	90°00'00"	4.50	7.07	4.50	6.36	S28°51'19"W

LINE TABLE PHASE 27

NUMBER	BEARING	DISTANCE
L1	N73°54'06"E	82.38
L2	N73°45'25"E	78.91
L3	S16°08'41"E	97.38
L4	S73°51'19"W	76.50
L5	S16°08'41"E	13.50
L6	S73°51'19"W	80.29
L7	S16°08'41"E	115.61

JFS 06.03.02-10:59 83950273.dwg



5248 Olde Towne Road, Suite 1
 Williamsburg, Virginia 23188
 (757) 253-0040
 Fax (757) 220-8994

**PLAT OF CONDOMINIUM
 WESTGATE AT WILLIAMSBURG,
 A CONDOMINIUM
 PHASE TWENTY-SEVEN**
 OWNED BY: 752 L.L.C.,
 A VIRGINIA LIMITED LIABILITY COMPANY
 CITY OF WILLIAMSBURG VIRGINIA



No.	DATE	REVISION / COMMENT / NOTE	BY
		City of Williamsburg & County of James City Circuit Court: This PLAT was recorded on 14 June 2002	
		DOCUMENT # 021065	
		BETSY B. WOOLRIDGE, CLERK	
		<i>Betsy Woolridge</i> Sup. Clerk	

Designed	Drawn
GTW/ADS	JFS
Scale	Date
1" = 60'	6/03/02
Project No.	
8395-6	
Drawing No.	
3 OF 6	

SEE SHEET 2