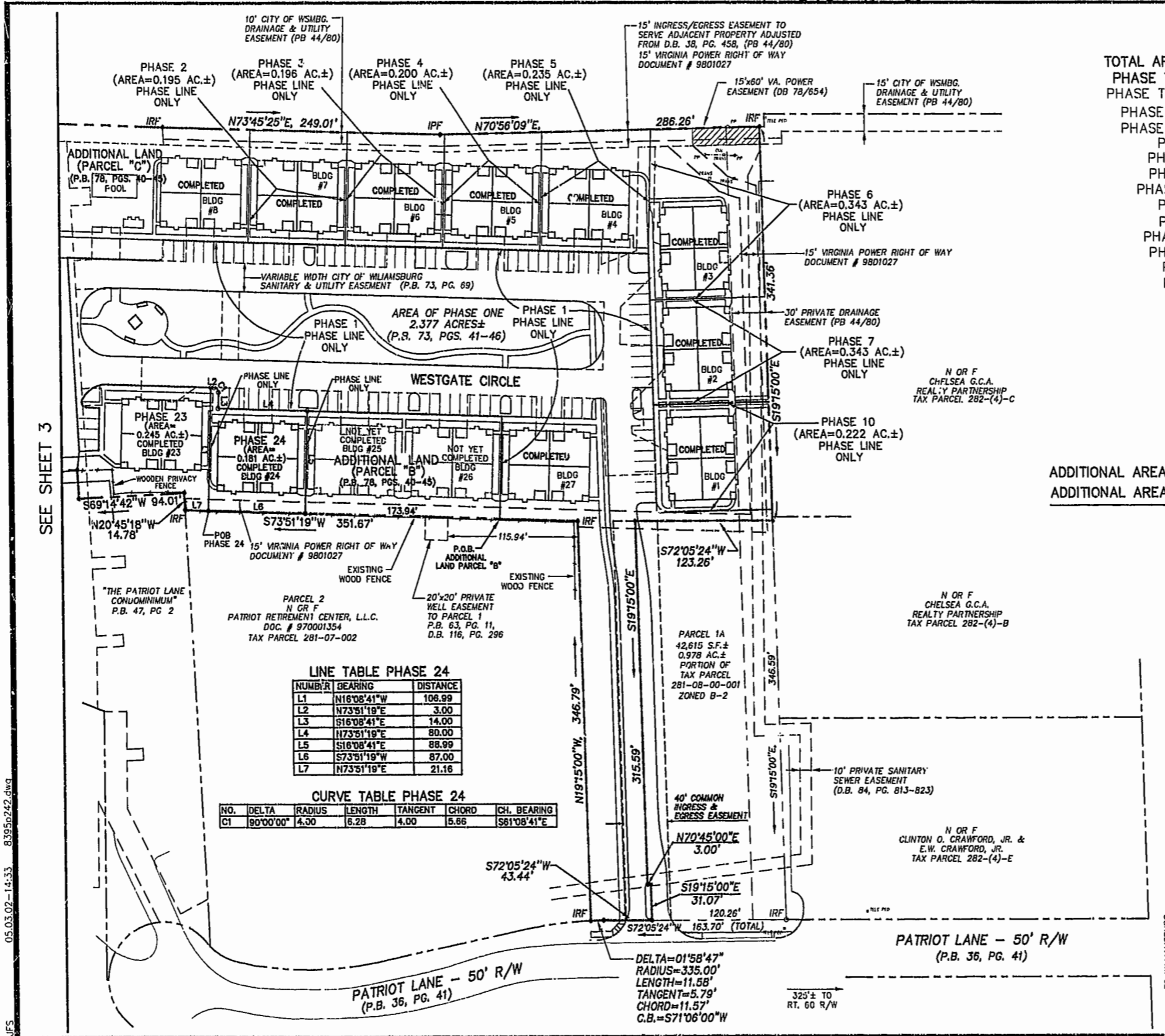


AREA

TOTAL AREA PARCEL 1=	10.935 AC±
PHASE TWENTY-FOUR=	0.181 AC±
PHASE TWENTY-THREE=	0.245 AC±
PHASE TWENTY-TWO=	0.249 AC±
PHASE TWENTY-ONE=	0.203 AC±
PHASE TWENTY=	0.206 AC±
PHASE NINETEEN=	0.345 AC±
PHASE EIGHTEEN=	0.251 AC±
PHASE SEVENTEEN=	0.323 AC±
PHASE SIXTEEN=	0.368 AC±
PHASE FIFTEEN=	0.235 AC±
PHASE FOURTEEN=	0.419 AC±
PHASE THIRTEEN=	1.098 AC±
PHASE TWELVE=	0.227 AC±
PHASE ELEVEN=	0.195 AC±
PHASE TEN=	0.222 AC±
PHASE NINE=	0.196 AC±
PHASE EIGHT=	1.459 AC±
PHASE SEVEN=	0.216 AC±
PHASE SIX=	0.343 AC±
PHASE FIVE=	0.235 AC±
PHASE FOUR=	0.200 AC±
PHASE THREE=	0.196 AC±
PHASE TWO=	0.195 AC±
PHASE ONE=	2.377 AC±
ADDITIONAL AREA (PARCEL "B")=	0.355 AC±
ADDITIONAL AREA (PARCEL "C")=	0.396 AC±
TOTAL=	10.935 AC±



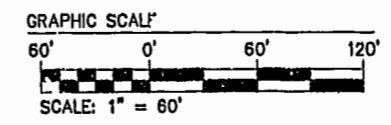
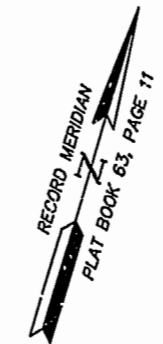
LINE TABLE PHASE 24

NUMBER	BEARING	DISTANCE
L1	N18°08'41"W	106.99
L2	N73°51'18"E	3.00
L3	S16°08'41"E	14.00
L4	N73°51'19"E	80.00
L5	S18°08'41"E	88.99
L6	S73°51'19"W	87.00
L7	N73°51'19"E	21.16

CURVE TABLE PHASE 24

NO.	DELTA	RADIUS	LENGTH	TANGENT	CHORD	CH. BEARING
C1	90°00'00"	4.00	6.28	4.00	5.86	S81°08'41"E

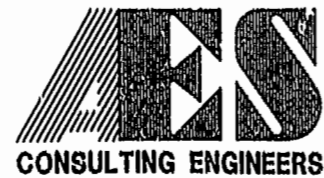
SEE SHEET 3



RICHMOND ROAD - U.S. ROUTE 60
TO RICHMOND

TO WILLIAMSBURG

05.03.02-14:33 83950242.dwg



5248 Olde Towne Road, Suite 1
Williamsburg, Virginia 23188
(757) 253-0040
Fax (757) 220-8994

PLAT OF CONDOMINIUM
WESTGATE AT WILLIAMSBURG,
A CONDOMINIUM
PHASE TWENTY-FOUR
OWNED BY: 752 L.L.C.,
A VIRGINIA LIMITED LIABILITY COMPANY
CITY OF WILLIAMSBURG VIRGINIA



City of Williamsburg & County of James City	
Circuit Court:	This PLAT was recorded on
at	3:14 AM/PM, PB 16, PG 17-22
DOCUMENT #	020885
BETSY B. WOOLRIDGE, CLERK	
[Signature] App. Clerk	
No.	DATE
REVISION / COMMENT / NOTE	
BY	

Designed	Drawn
GTW/ADS	JFS
Scale	Date
1" = 60'	4/26/02
Project No.	
8395-6	
Drawing No.	
2 OF 6	